


Product datasheet

Anti-KCNN2/SK2 antibody ab85401

2 References 5 Images

Overview

Product name	Anti-KCNN2/SK2 antibody
Description	Rabbit polyclonal to KCNN2/SK2
Host species	Rabbit
Tested applications	Suitable for: ICC/IF, WB
Species reactivity	Reacts with: Mouse, Human Predicted to work with: Rat, Rabbit, Horse, Chicken, Guinea pig, Cow, Cat, Dog, Pig, Zebrafish 
Immunogen	Synthetic peptide within Human KCNN2/SK2 aa 72-121 (internal sequence). The exact sequence is proprietary. Isoform b (NP_740721). Sequence: KNAANVLRRETWLIYKNTKLVKKIDHAKVRKHQRKFLQ AIHQLRSVKMEQ Run BLAST with Run BLAST with
Positive control	WB: Human fetal muscle, fetal heart and fetal lung tissue lysate. IF: Rhesus macaque spinal cord.
General notes	Protein previously known as KCNN2.

Properties

Form	Liquid
Storage instructions	Shipped at 4°C. Upon delivery aliquot and store at -20°C. Avoid repeated freeze / thaw cycles.
Storage buffer	Preservative: 0.09% Sodium azide Constituents: 2% Sucrose, PBS
Purity	Immunogen affinity purified
Clonality	Polyclonal
Isotype	IgG

Applications

Our [Abpromise guarantee](#) covers the use of **ab85401** in the following tested applications.

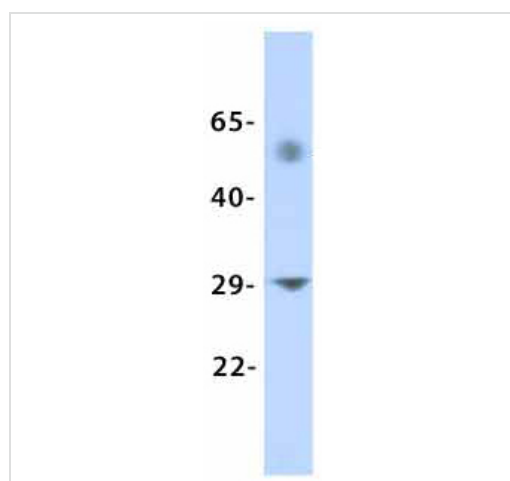
The application notes include recommended starting dilutions; optimal dilutions/concentrations should be determined by the end user.

Application	Abreviews	Notes
ICC/IF		Use at an assay dependent concentration.
WB		Use a concentration of 1 µg/ml. Predicted molecular weight: 26 kDa. Good results were obtained when blocked with 5% non-fat dry milk in 0.05% PBS-T.

Target

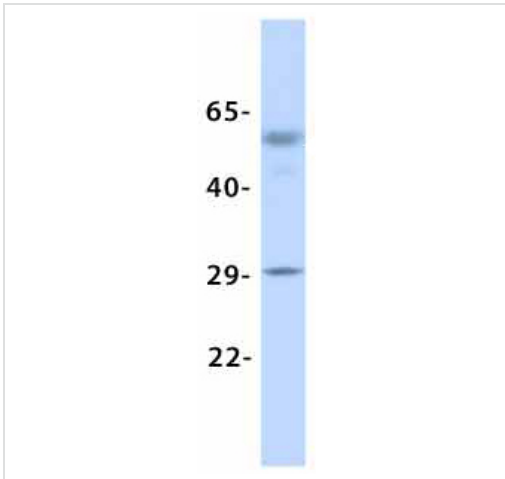
Function	Forms a voltage-independent potassium channel activated by intracellular calcium. Activation is followed by membrane hyperpolarization. Thought to regulate neuronal excitability by contributing to the slow component of synaptic afterhyperpolarization. The channel is blocked by apamin.
Tissue specificity	Widely expressed.
Sequence similarities	Belongs to the potassium channel KCNN family. KCa2.2/KCNN2 subfamily.
Cellular localization	Membrane.

Images



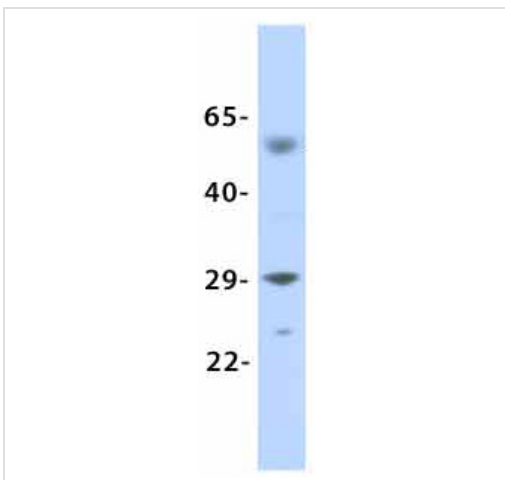
Western blot analysis of human fetal muscle tissue lysate labeling KCNN2/SK2 with ab85401 at 1.0µg/ml.

Western blot - Anti-KCNN2/SK2 antibody (ab85401)



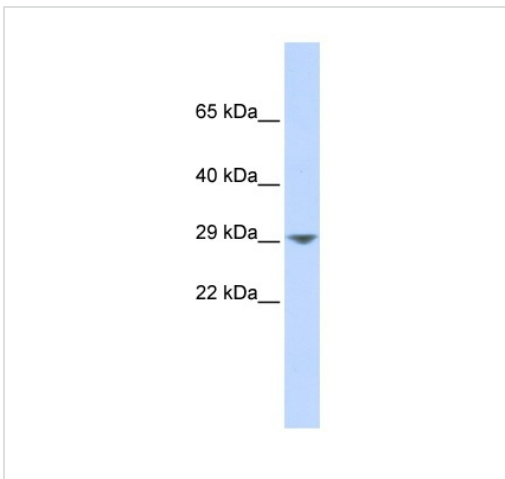
Western blot - Anti-KCNN2/SK2 antibody (ab85401)

Western blot analysis of human fetal lung tissue lysate labeling KCNN2/SK2 with ab85401 at 1.0µg/ml.



Western blot - Anti-KCNN2/SK2 antibody (ab85401)

Western blot analysis of human fetal heart tissue lysate labeling KCNN2/SK2 with ab85401 at 1.0µg/ml.



Western blot - Anti-KCNN2/SK2 antibody (ab85401)

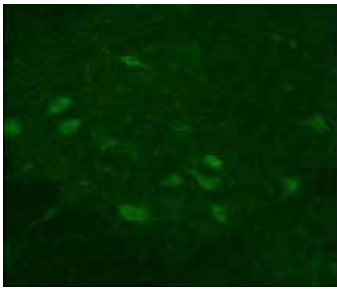
Anti-KCNN2/SK2 antibody (ab85401) at 1 µg/ml (in 5% skim milk / PBS buffer) + Human fetal muscle lysate at 10 µg

Secondary

HRP conjugated anti-Rabbit IgG at 1/50000 dilution

Predicted band size: 26 kDa

12% gel



ab85401 staining KCNN2/SK2 in rhesus macaque spinal cord by ICC/IF (Immunocytochemistry/immunofluorescence). Samples were incubated with primary antibody (1/300). An Alexa Fluor[®]488-conjugated Donkey anti-rabbit (1/500) was used as the secondary antibody.

Immunocytochemistry/ Immunofluorescence - Anti-KCNN2/SK2 antibody (ab85401)

Please note: All products are "FOR RESEARCH USE ONLY. NOT FOR USE IN DIAGNOSTIC PROCEDURES"

Our Abpromise to you: Quality guaranteed and expert technical support

- Replacement or refund for products not performing as stated on the datasheet
- Valid for 12 months from date of delivery
- Response to your inquiry within 24 hours
- We provide support in Chinese, English, French, German, Japanese and Spanish
- Extensive multi-media technical resources to help you
- We investigate all quality concerns to ensure our products perform to the highest standards

If the product does not perform as described on this datasheet, we will offer a refund or replacement. For full details of the Abpromise, please visit <https://www.abcam.com/abpromise> or contact our technical team.

Terms and conditions

- Guarantee only valid for products bought direct from Abcam or one of our authorized distributors