


Product datasheet

Anti-KDM4C / GASC1 / JMJD2C antibody ab226480

2 Images

Overview

Product name	Anti-KDM4C / GASC1 / JMJD2C antibody
Description	Rabbit polyclonal to KDM4C / GASC1 / JMJD2C
Host species	Rabbit
Tested applications	Suitable for: WB, IP
Species reactivity	Reacts with: Human Predicted to work with: Chimpanzee, Gorilla, Orangutan 
Immunogen	Synthetic peptide within Human KDM4C/ GASC1/ JMJD2C aa 475-525. The exact sequence is proprietary. (NP_055876.2). Database link: Q9H3R0
Positive control	WB: HeLa and HEK-293T whole cell lysates. IP: HeLa whole cell lysate.
General notes	<p>Reproducibility is key to advancing scientific discovery and accelerating scientists' next breakthrough.</p> <p>Abcam is leading the way with our range of recombinant antibodies, knockout-validated antibodies and knockout cell lines, all of which support improved reproducibility.</p> <p>We are also planning to innovate the way in which we present recommended applications and species on our product datasheets, so that only applications & species that have been tested in our own labs, our suppliers or by selected trusted collaborators are covered by our Abpromise™ guarantee.</p> <p>In preparation for this, we have started to update the applications & species that this product is Abpromise guaranteed for.</p> <p>We are also updating the applications & species that this product has been “predicted to work with,” however this information is not covered by our Abpromise guarantee.</p> <p>Applications & species from publications and Abreviews that have not been tested in our own labs or in those of our suppliers are not covered by the Abpromise guarantee.</p> <p>Please check that this product meets your needs before purchasing. If you have any questions, special requirements or concerns, please send us an inquiry and/or contact our Support team ahead of purchase. Recommended alternatives for this product can be found below, as well as customer reviews and Q&As.</p>

Properties

Form	Liquid
Storage instructions	Shipped at 4°C. Store at +4°C short term (1-2 weeks). Upon delivery aliquot. Store at -20°C long term. Avoid freeze / thaw cycle.
Storage buffer	pH: 7 Preservative: 0.09% Sodium azide Constituent: Tris citrate/phosphate
	pH 7 to 8
Purity	Immunogen affinity purified
Purification notes	ab226480 was affinity purified using an epitope specific to KDM4C / GASC1 / JMJD2C immobilized on solid support.
Clonality	Polyclonal
Isotype	IgG

Applications

Our [Abpromise guarantee](#) covers the use of **ab226480** in the following tested applications.

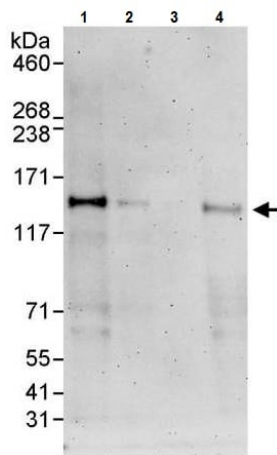
The application notes include recommended starting dilutions; optimal dilutions/concentrations should be determined by the end user.

Application	Abreviews	Notes
WB		1/2000 - 1/10000. Predicted molecular weight: 120 kDa.
IP		Use at 2-5 µg/mg of lysate.

Target

Function	Histone demethylase that specifically demethylates 'Lys-9' and 'Lys-36' residues of histone H3, thereby playing a central role in histone code. Does not demethylate histone H3 'Lys-4', H3 'Lys-27' nor H4 'Lys-20'. Demethylates trimethylated H3 'Lys-9' and H3 'Lys-36' residue, while it has no activity on mono- and dimethylated residues. Demethylation of Lys residue generates formaldehyde and succinate.
Tissue specificity	Overexpressed in several esophageal squamous cell carcinomas (ESCs).
Sequence similarities	Belongs to the JHDM3 histone demethylase family. Contains 1 JmjC domain. Contains 1 JmjN domain. Contains 2 PHD-type zinc fingers. Contains 2 Tudor domains.
Domain	The 2 Tudor domains recognize and bind methylated histones. Double Tudor domain has an interdigitated structure and the unusual fold is required for its ability to bind methylated histone tails.
Cellular localization	Nucleus.

Images



Western blot - Anti-KDM4C / GASC1 / JMJD2C antibody (ab226480)

All lanes : Anti-KDM4C / GASC1 / JMJD2C antibody (ab226480) at 0.1 µg/ml

Lane 1 : HeLa (human epithelial cell line from cervix adenocarcinoma) whole cell lysate at 50 µg

Lane 2 : HeLa (human epithelial cell line from cervix adenocarcinoma) whole cell lysate at 15 µg

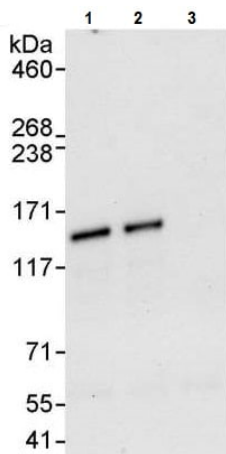
Lane 3 : HeLa (human epithelial cell line from cervix adenocarcinoma) whole cell lysate at 5 µg

Lane 4 : HEK-293T (human epithelial cell line from embryonic kidney transformed with large T antigen) whole cell lysate at 50 µg

Developed using the ECL technique.

Predicted band size: 120 kDa

Exposure time: 3 minutes



Immunoprecipitation - Anti-KDM4C / GASC1 / JMJD2C antibody (ab226480)

KDM4C / GASC1 / JMJD2C was immunoprecipitated from HeLa (human epithelial cell line from cervix adenocarcinoma) whole cell lysate (1 mg for IP, 20% of IP loaded) with ab226480 at 3 µg/mg lysate. Western blot was performed from the immunoprecipitate using ab226480 at 1 µg/ml.

Lane 1: ab226480 (Lot 1) IP in HeLa whole cell lysate.

Lane 2: ab226480 (Lot 2) IP in HeLa whole cell lysate.

Lane 3: Control IgG IP in HeLa whole cell lysate.

Detection: Chemiluminescence with exposure time of 30 seconds.

Please note: All products are "FOR RESEARCH USE ONLY. NOT FOR USE IN DIAGNOSTIC PROCEDURES"

Our Abpromise to you: Quality guaranteed and expert technical support

- Replacement or refund for products not performing as stated on the datasheet
- Valid for 12 months from date of delivery
- Response to your inquiry within 24 hours
- We provide support in Chinese, English, French, German, Japanese and Spanish
- Extensive multi-media technical resources to help you

- We investigate all quality concerns to ensure our products perform to the highest standards

If the product does not perform as described on this datasheet, we will offer a refund or replacement. For full details of the Abpromise, please visit <https://www.abcam.com/abpromise> or contact our technical team.

Terms and conditions

- Guarantee only valid for products bought direct from Abcam or one of our authorized distributors