




Product datasheet

Anti-Keratin 12/K12 antibody ab169328

1 References 1 Image

Overview

Product name	Anti-Keratin 12/K12 antibody
Description	Mouse polyclonal to Keratin 12/K12
Host species	Mouse
Tested applications	Suitable for: WB
Species reactivity	Reacts with: Human Predicted to work with: Dog 
Immunogen	Recombinant full length protein within Human Keratin 12/K12 aa 1-500. The exact immunogen sequence used to generate this antibody is proprietary information. If additional detail on the immunogen is needed to determine the suitability of the antibody for your needs, please contact our Scientific Support team to discuss your requirements. (AAI56642.1) Database link: Q99456 <div style="text-align: right;"> Run BLAST with  Run BLAST with</div>
Positive control	Keratin 12/K12-transfected 293T cell lysate.
General notes	Previously labelled as Keratin 12. The Life Science industry has been in the grips of a reproducibility crisis for a number of years. Abcam is leading the way in addressing this with our range of recombinant monoclonal antibodies and knockout edited cell lines for gold-standard validation. Please check that this product meets your needs before purchasing. If you have any questions, special requirements or concerns, please send us an inquiry and/or contact our Support team ahead of purchase. Recommended alternatives for this product can be found below, along with publications, customer reviews and Q&As

Properties

Form	Liquid
Storage instructions	Shipped at 4°C. Store at +4°C short term (1-2 weeks). Upon delivery aliquot. Store at -20°C long term.
Storage buffer	pH: 7.4 Constituent: 100% PBS
Purity	Protein A purified
Clonality	Polyclonal

Isotype

IgG

Applications

The Abpromise guarantee

Our [Abpromise guarantee](#) covers the use of ab169328 in the following tested applications.

The application notes include recommended starting dilutions; optimal dilutions/concentrations should be determined by the end user.

Application	Abreviews	Notes
WB		Use a concentration of 1 µg/ml. Predicted molecular weight: 55 kDa.

Target

Function

May play a unique role in maintaining the normal corneal epithelial function. Together with KRT3, essential for the maintenance of corneal epithelium integrity.

Tissue specificity

Cornea specific.

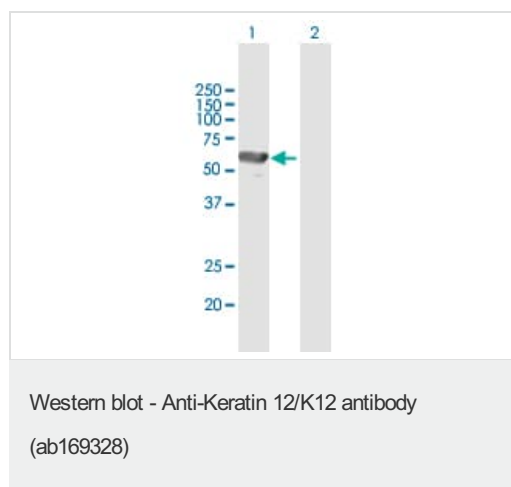
Involvement in disease

Defects in KRT12 are a cause of Meesmann corneal dystrophy (MECD) [MIM:122100]; also abbreviated MCD and known as juvenile epithelial corneal dystrophy of Meesmann. MECD is an autosomal dominant disease that causes fragility of the anterior corneal epithelium. Patients are usually asymptomatic until adulthood when rupture of the corneal microcysts may cause erosions, producing clinical symptoms such as photophobia, contact lens intolerance and intermittent diminution of visual acuity. Rarely, subepithelial scarring causes irregular corneal astigmatism and permanent visual impairment. Histological examination shows a disorganized and thickened epithelium with widespread cytoplasmic vacuolation and numerous small, round, debris-laden intraepithelial cysts.

Sequence similarities

Belongs to the intermediate filament family.

Images



All lanes : Anti-Keratin 12/K12 antibody (ab169328) at 1 µg/ml

Lane 1 : Keratin 12/K12-transfected 293T cell lysate

Lane 2 : Non-transfected 293T cell lysate

Lysates/proteins at 15 µl per lane.

Developed using the ECL technique.

Predicted band size: 55 kDa

Please note: All products are "FOR RESEARCH USE ONLY. NOT FOR USE IN DIAGNOSTIC PROCEDURES"

Our Abpromise to you: Quality guaranteed and expert technical support

- Replacement or refund for products not performing as stated on the datasheet
- Valid for 12 months from date of delivery
- Response to your inquiry within 24 hours

- We provide support in Chinese, English, French, German, Japanese and Spanish
- Extensive multi-media technical resources to help you
- We investigate all quality concerns to ensure our products perform to the highest standards

If the product does not perform as described on this datasheet, we will offer a refund or replacement. For full details of the Abpromise, please visit <https://www.abcam.com/abpromise> or contact our technical team.

Terms and conditions

- Guarantee only valid for products bought direct from Abcam or one of our authorized distributors