

## Product datasheet

# Anti-KIAA0652/ATG13 antibody ab105392

★★★★★ 1 Abreviews 5 References 4 Images

### Overview

<b>Product name</b>	Anti-KIAA0652/ATG13 antibody
<b>Description</b>	Rabbit polyclonal to KIAA0652/ATG13
<b>Host species</b>	Rabbit
<b>Specificity</b>	ab105392 is predicted to not cross-react with other ATG members. Two isoforms of KIAA0652/ATG13 are known to exist; this antibody will recognize both isoforms.
<b>Tested applications</b>	<b>Suitable for:</b> ICC/IF, WB, IHC-P
<b>Species reactivity</b>	<b>Reacts with:</b> Mouse, Rat, Human
<b>Immunogen</b>	Synthetic peptide corresponding to Human KIAA0652/ATG13 (C terminal). Database link: <a href="#">NP_001136145</a>
<b>Positive control</b>	Rat heart tissue, Mouse heart tissue ICC: DU145 cell line
<b>General notes</b>	This product was previously labelled as KIAA0652

Reproducibility is key to advancing scientific discovery and accelerating scientists' next breakthrough.

Abcam is leading the way with our range of recombinant antibodies, knockout-validated antibodies and knockout cell lines, all of which support improved reproducibility.

We are also planning to innovate the way in which we present recommended applications and species on our product datasheets, so that only applications & species that have been tested in our own labs, our suppliers or by selected trusted collaborators are covered by our Abpromise™ guarantee.

In preparation for this, we have started to update the applications & species that this product is Abpromise guaranteed for.

We are also updating the applications & species that this product has been “predicted to work with,” however this information is not covered by our Abpromise guarantee.

Applications & species from publications and Abreviews that have not been tested in our own labs or in those of our suppliers are not covered by the Abpromise guarantee.

Please check that this product meets your needs before purchasing. If you have any questions, special requirements or concerns, please send us an inquiry and/or contact our Support team ahead of purchase. Recommended alternatives for this product can be found below, as well as customer reviews and Q&As.

## Properties

---

<b>Form</b>	Liquid
<b>Storage instructions</b>	Shipped at 4°C. Store at +4°C short term (1-2 weeks). Store at -20°C long term.
<b>Storage buffer</b>	pH: 7.2 Preservative: 0.02% Sodium azide Constituent: PBS
<b>Purity</b>	Immunogen affinity purified
<b>Clonality</b>	Polyclonal
<b>Isotype</b>	IgG

## Applications

---

Our [Abpromise guarantee](#) covers the use of **ab105392** in the following tested applications.

The application notes include recommended starting dilutions; optimal dilutions/concentrations should be determined by the end user.

Application	Abreviews	Notes
ICC/IF		Use at an assay dependent concentration.
WB	★★★★☆	Use a concentration of 1 - 2 µg/ml. Predicted molecular weight: 57 kDa.
IHC-P		Use a concentration of 5 µg/ml.

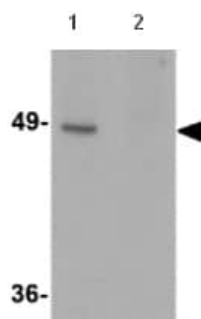
## Target

---

<b>Function</b>	Autophagy factor required for autophagosome formation. Target of the TOR kinase signaling pathway that regulates autophagy through the control of the phosphorylation status of ATG13 and ULK1, and the regulation of the ATG13-ULK1-RB1CC1 complex.
<b>Sequence similarities</b>	Belongs to the ATG13 metazoan family.
<b>Post-translational modifications</b>	Phosphorylated by ULK1 and ULK2. Phosphorylation status depends on nutrient-rich conditions; dephosphorylated during starvation or following treatment with rapamycin.
<b>Cellular localization</b>	Cytoplasm > cytosol. Preautophagosomal structure. Under starvation conditions, is localized to punctate structures primarily representing the isolation membrane and the isolation membrane sequesters a portion of the cytoplasm resulting in autophagosome formation.

## Images

---



Western blot - Anti-KIAA0652/ATG13 antibody (ab105392)

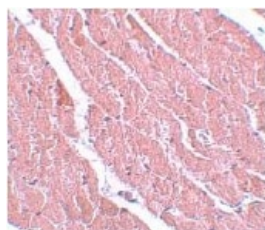
**All lanes :** Anti-KIAA0652/ATG13 antibody (ab105392) at 1 µg/ml

**Lane 1 :** Rat heart tissue lysate without blocking peptide

**Lane 2 :** Rat heart tissue lysate with blocking peptide

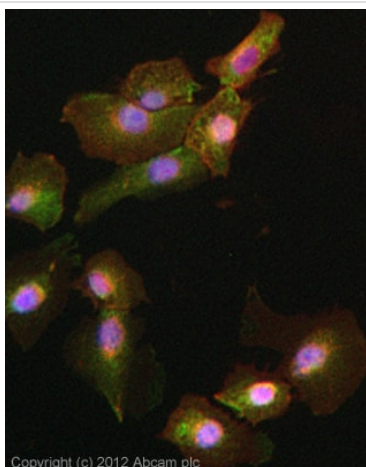
Lysates/proteins at 15 µg per lane.

**Predicted band size:** 57 kDa



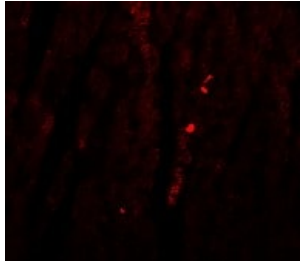
Immunohistochemistry (Formalin/PFA-fixed paraffin-embedded sections) - Anti-KIAA0652/ATG13 antibody (ab105392)

Immunohistochemistry of KIAA0652/ATG13 in Mouse heart, using ab105392 at a dilution of 5 µg/ml.



Immunocytochemistry/ Immunofluorescence - Anti-KIAA0652/ATG13 antibody (ab105392)

ICC/IF image of ab105392 stained DU145 cells. The cells were 4% paraformaldehyde fixed (10 min) and then incubated in 1%BSA / 10% normal goat serum / 0.3M glycine in 0.1% PBS-Tween for 1h to permeabilise the cells and block non-specific protein-protein interactions. The cells were then incubated with the antibody (ab105392, 5µg/ml) overnight at +4°C. The secondary antibody (green) was [ab96899](#), DyLight® 488 goat anti-rabbit IgG (H+L) used at a 1/250 dilution for 1h. Alexa Fluor® 594 WGA was used to label plasma membranes (red) at a 1/200 dilution for 1h. DAPI was used to stain the cell nuclei (blue) at a concentration of 1.43µM.



Immunofluorescence of ATG13 in Mouse Heart cells using ab105392 at 20 ug/ml.

Immunocytochemistry/ Immunofluorescence - Anti-KIAA0652/ATG13 antibody (ab105392)

**Please note:** All products are "FOR RESEARCH USE ONLY. NOT FOR USE IN DIAGNOSTIC PROCEDURES"

### Our Abpromise to you: Quality guaranteed and expert technical support

---

- Replacement or refund for products not performing as stated on the datasheet
- Valid for 12 months from date of delivery
- Response to your inquiry within 24 hours
- We provide support in Chinese, English, French, German, Japanese and Spanish
- Extensive multi-media technical resources to help you
- We investigate all quality concerns to ensure our products perform to the highest standards

If the product does not perform as described on this datasheet, we will offer a refund or replacement. For full details of the Abpromise, please visit <https://www.abcam.com/abpromise> or contact our technical team.

### Terms and conditions

---

- Guarantee only valid for products bought direct from Abcam or one of our authorized distributors