

## Product datasheet

# Anti-KIAA0802 antibody ab100914

[2 Images](#)

### Overview

---

<b>Product name</b>	Anti-KIAA0802 antibody
<b>Description</b>	Rabbit polyclonal to KIAA0802
<b>Host species</b>	Rabbit
<b>Tested applications</b>	<b>Suitable for:</b> WB, IP
<b>Species reactivity</b>	<b>Reacts with:</b> Human
<b>Immunogen</b>	A region between amino acids 926-976 of Human KIAA0802 (AAH40542.2).
<b>Positive control</b>	HeLa lysate
<b>General notes</b>	<p>Antibody concentration was determined by extinction coefficient: absorbance at 280 nm of 1.4 equals 1.0 mg of IgG.</p> <p>Reproducibility is key to advancing scientific discovery and accelerating scientists' next breakthrough.</p> <p>Abcam is leading the way with our range of recombinant antibodies, knockout-validated antibodies and knockout cell lines, all of which support improved reproducibility.</p> <p>We are also planning to innovate the way in which we present recommended applications and species on our product datasheets, so that only applications &amp; species that have been tested in our own labs, our suppliers or by selected trusted collaborators are covered by our Abpromise™ guarantee.</p> <p>In preparation for this, we have started to update the applications &amp; species that this product is Abpromise guaranteed for.</p> <p>We are also updating the applications &amp; species that this product has been "predicted to work with," however this information is not covered by our Abpromise guarantee.</p> <p>Applications &amp; species from publications and Abreviews that have not been tested in our own labs or in those of our suppliers are not covered by the Abpromise guarantee.</p> <p>Please check that this product meets your needs before purchasing. If you have any questions, special requirements or concerns, please send us an inquiry and/or contact our Support team ahead of purchase. Recommended alternatives for this product can be found below, as well as customer reviews and Q&amp;As.</p>

### Properties

---

<b>Form</b>	Liquid
-------------	--------

<b>Storage instructions</b>	Shipped at 4°C. Upon delivery aliquot and store at -20°C. Avoid freeze / thaw cycles.
<b>Storage buffer</b>	pH: 7 Preservative: 0.09% Sodium azide Constituent: Tris citrate/phosphate
<b>Purity</b>	Immunogen affinity purified
<b>Clonality</b>	Polyclonal
<b>Isotype</b>	IgG

## Applications

Our [Abpromise guarantee](#) covers the use of **ab100914** in the following tested applications.

The application notes include recommended starting dilutions; optimal dilutions/concentrations should be determined by the end user.

Application	Abreviews	Notes
WB		1/2000 - 1/10000. Predicted molecular weight: 209 kDa.
IP		Use at 5-15 µg/mg of lysate.

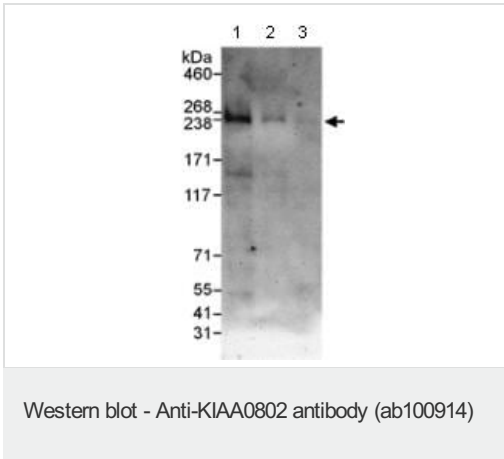
## Target

**Function** Microtubule-associated factor involved in the late phase of epithelial polarization and microtubule dynamics regulation. Plays a role in the development and maintenance of non-centrosomal microtubule bundles at the lateral membrane in polarized epithelial cells.

**Sequence similarities** Belongs to the SOGA family.

**Cellular localization** Lateral cell membrane. Apical cell membrane. Cytoplasm, cytoskeleton, spindle pole. Midbody. Cytoplasm, cytoskeleton. Colocalized with microtubules at the base of cilia. Gradually accumulates on the apicobasal microtubule bundles during epithelial cell polarization (By similarity). Colocalized with the apicobasal microtubule bundles running beneath the lateral membrane. Colocalized with microtubule bundles in the spindle pole in mitotic cells and in the midbodies at the end of cytokinesis.

## Images



**All lanes :** Anti-KIAA0802 antibody (ab100914) at 1 µg/ml

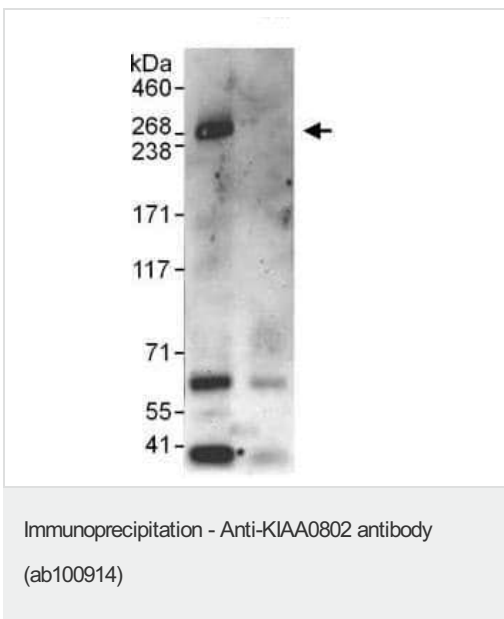
**Lane 1 :** HeLa Whole Cell Lysate at 50 µg

**Lane 2 :** HeLa Whole Cell Lysate at 15 µg

**Lane 3 :** HeLa Whole Cell Lysate at 5 µg

**Predicted band size:** 209 kDa

**Exposure time:** 3 minutes



ab100914 at 1 µg/ml staining KIAA0802 in HeLa cell lysate immunoprecipitated using ab100914 at 10 µg/mg lysate (1 mg/IP; 20% of IP loaded/lane). Exposure time: 3 minutes

**Please note:** All products are "FOR RESEARCH USE ONLY. NOT FOR USE IN DIAGNOSTIC PROCEDURES"

### Our Abpromise to you: Quality guaranteed and expert technical support

- Replacement or refund for products not performing as stated on the datasheet
- Valid for 12 months from date of delivery
- Response to your inquiry within 24 hours
- We provide support in Chinese, English, French, German, Japanese and Spanish
- Extensive multi-media technical resources to help you
- We investigate all quality concerns to ensure our products perform to the highest standards

If the product does not perform as described on this datasheet, we will offer a refund or replacement. For full details of the Abpromise, please visit <https://www.abcam.com/abpromise> or contact our technical team.

### Terms and conditions

- Guarantee only valid for products bought direct from Abcam or one of our authorized distributors