




Product datasheet

Anti-KIAA1429 antibody ab246982

1 References 6 Images

Overview

Product name	Anti-KIAA1429 antibody
Description	Rabbit polyclonal to KIAA1429
Host species	Rabbit
Tested applications	Suitable for: IHC-P, ICC/IF
Species reactivity	Reacts with: Human Predicted to work with: Mouse 
Immunogen	Recombinant fragment corresponding to Human KIAA1429 aa 1049-1146. Sequence: LSGR LDSDEQKIQNDIIDILLTFTQGVNEKLTISEETLANNTW SLMLKEV LSSILKVPEGFFSGLILLSELLPLPLPMQTTQVIEPHDISVAL NTRKL Database link: Q69YN4  Run BLAST with  Run BLAST with
Positive control	IHC-P: Human testis, endometrium, skin and rectum tissue. ICC/IF: U-2 OS cells.
General notes	<p>Reproducibility is key to advancing scientific discovery and accelerating scientists' next breakthrough.</p> <p>Abcam is leading the way with our range of recombinant antibodies, knockout-validated antibodies and knockout cell lines, all of which support improved reproducibility.</p> <p>We are also planning to innovate the way in which we present recommended applications and species on our product datasheets, so that only applications & species that have been tested in our own labs, our suppliers or by selected trusted collaborators are covered by our Abpromise™ guarantee.</p> <p>In preparation for this, we have started to update the applications & species that this product is Abpromise guaranteed for.</p> <p>We are also updating the applications & species that this product has been “predicted to work with,” however this information is not covered by our Abpromise guarantee.</p> <p>Applications & species from publications and Abreviews that have not been tested in our own labs or in those of our suppliers are not covered by the Abpromise guarantee.</p> <p>Please check that this product meets your needs before purchasing. If you have any questions, special requirements or concerns, please send us an inquiry and/or contact our Support team</p>

ahead of purchase. Recommended alternatives for this product can be found below, as well as customer reviews and Q&As.

Properties

Form	Liquid
Storage instructions	Shipped at 4°C. Store at +4°C short term (1-2 weeks). Upon delivery aliquot. Store at -20°C long term. Avoid freeze / thaw cycle.
Storage buffer	pH: 7.20 Preservative: 0.02% Sodium azide Constituents: 40% Glycerol (glycerin, glycerine), PBS
Purity	Immunogen affinity purified
Clonality	Polyclonal
Isotype	IgG

Applications

Our [Abpromise guarantee](#) covers the use of **ab246982** in the following tested applications.

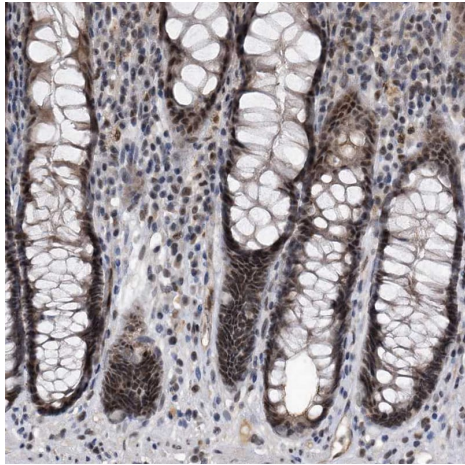
The application notes include recommended starting dilutions; optimal dilutions/concentrations should be determined by the end user.

Application	Abreviews	Notes
IHC-P		1/20 - 1/50. Perform heat mediated antigen retrieval with citrate buffer pH 6 before commencing with IHC staining protocol.
ICC/IF		Use a concentration of 0.25 - 2 µg/ml. Fixation/Permeabilization: PFA/Triton X-100.

Target

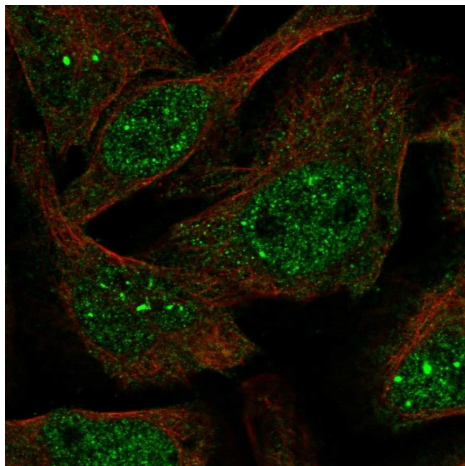
Function	May be involved in mRNA splicing regulation.
Sequence similarities	Belongs to the vir family.
Cellular localization	Nucleus.

Images



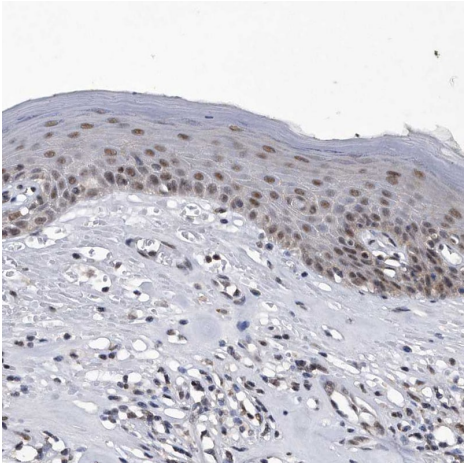
Paraffin-embedded human rectum tissue stained for KIAA1429 using ab246982 at 1/20 dilution in immunohistochemical analysis.

Immunohistochemistry (Formalin/PFA-fixed paraffin-embedded sections) - Anti-KIAA1429 antibody (ab246982)



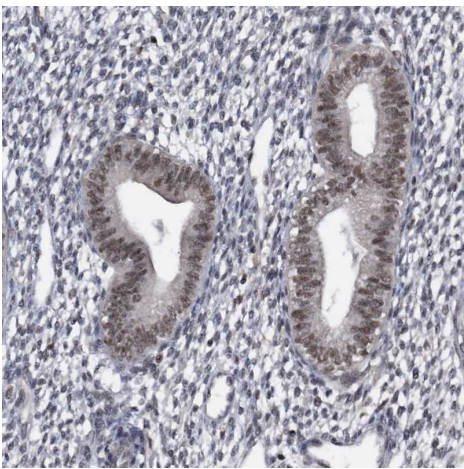
PFA-fixed, Triton X-100 permeabilized U-2 OS cells stained for KIAA1429 (green) using ab246982 at 4 µg/ml in ICC/IF.

Immunocytochemistry/ Immunofluorescence - Anti-KIAA1429 antibody (ab246982)



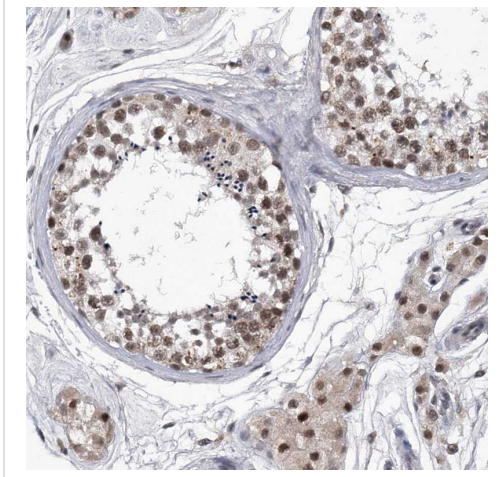
Immunohistochemistry (Formalin/PFA-fixed paraffin-embedded sections) - Anti-KIAA1429 antibody (ab246982)

Paraffin-embedded human skin tissue stained for KIAA1429 using ab246982 at 1/20 dilution in immunohistochemical analysis.



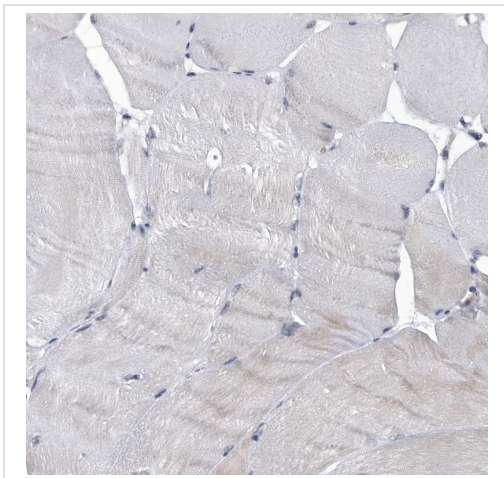
Immunohistochemistry (Formalin/PFA-fixed paraffin-embedded sections) - Anti-KIAA1429 antibody (ab246982)

Paraffin-embedded human endometrium tissue stained for KIAA1429 using ab246982 at 1/20 dilution in immunohistochemical analysis.



Paraffin-embedded human testis tissue stained for KIAA1429 using ab246982 at 1/20 dilution in immunohistochemical analysis.

Immunohistochemistry (Formalin/PFA-fixed paraffin-embedded sections) - Anti-KIAA1429 antibody (ab246982)



Paraffin-embedded human skeletal muscle tissue stained for KIAA1429 using ab246982 at 1/20 dilution in immunohistochemical analysis. Weak positivity, as expected.

Immunohistochemistry (Formalin/PFA-fixed paraffin-embedded sections) - Anti-KIAA1429 antibody (ab246982)

Please note: All products are "FOR RESEARCH USE ONLY. NOT FOR USE IN DIAGNOSTIC PROCEDURES"

Our Promise to you: Quality guaranteed and expert technical support

- Replacement or refund for products not performing as stated on the datasheet
- Valid for 12 months from date of delivery

- Response to your inquiry within 24 hours
- We provide support in Chinese, English, French, German, Japanese and Spanish
- Extensive multi-media technical resources to help you
- We investigate all quality concerns to ensure our products perform to the highest standards

If the product does not perform as described on this datasheet, we will offer a refund or replacement. For full details of the Abpromise, please visit <https://www.abcam.com/abpromise> or contact our technical team.

Terms and conditions

- Guarantee only valid for products bought direct from Abcam or one of our authorized distributors