

Product datasheet

Anti-KIAA1467 antibody ab236775

3 Images

Overview

<b>Product name</b>	Anti-KIAA1467 antibody
<b>Description</b>	Rabbit polyclonal to KIAA1467
<b>Host species</b>	Rabbit
<b>Tested applications</b>	<b>Suitable for:</b> IHC-P, WB, ICC/IF
<b>Species reactivity</b>	<b>Reacts with:</b> Human
<b>Immunogen</b>	Recombinant fragment corresponding to Human KIAA1467 aa 401-622.

Sequence:

```
LITTRQSLVLLRGQNLTPYWALRLQGLRSQPTPGYFTD
DQTLDFLLQIQD
GVGMKMMVVDGDSGSIVWSYRAPCHMKETPATSA
VTSDQKSVFLFWAEG
LSAASPNSDILGTEPPSLHHLVLLHPAFPSILLDLANTT
GTVTASEVGI
NDLWKDAFYVTRTTGPSSEGHPAALVVSKLSLRWAL
MEGQMAQLQESTPK IGRGELRRFLSRIKFVEAPYEI
```

Database link: [A2RU67](#)

 [Run BLAST with](#)

 [Run BLAST with](#)

<b>Positive control</b>	WB: Human placenta lysate. IHC-P: Human pancreatic tissue. ICC/IF: HeLa cells.
-------------------------	--

Properties

<b>Form</b>	Liquid
<b>Storage instructions</b>	Shipped at 4°C. Store at +4°C short term (1-2 weeks). Upon delivery aliquot. Store at -20°C long term. Avoid freeze / thaw cycle.
<b>Storage buffer</b>	pH: 7.40 Preservative: 0.03% Proclin Constituents: 50% Glycerol, PBS
<b>Purity</b>	Protein G purified
<b>Purification notes</b>	Purity >95%.
<b>Clonality</b>	Polyclonal

Isotype

IgG

## Applications

Our [Abpromise guarantee](#) covers the use of **ab236775** in the following tested applications.

The application notes include recommended starting dilutions; optimal dilutions/concentrations should be determined by the end user.

Application	Abreviews	Notes
IHC-P		1/20 - 1/200.
WB		1/1000 - 1/5000. Predicted molecular weight: 67 kDa.
ICC/IF		1/50 - 1/200.

## Target

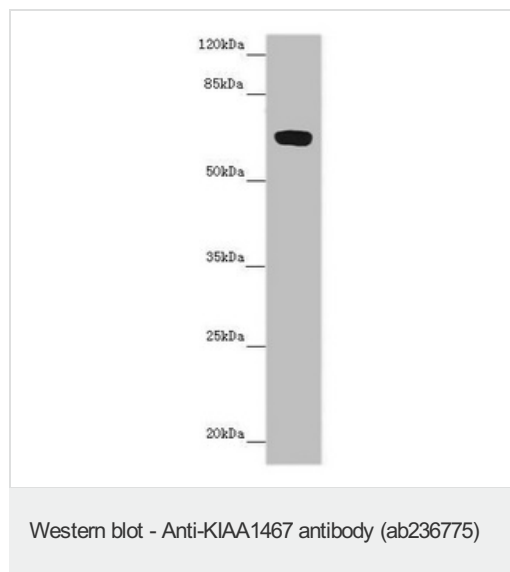
### Relevance

Belongs to the ITFG3 family.

### Cellular localization

Membrane; Single pass membrane protein

## Images

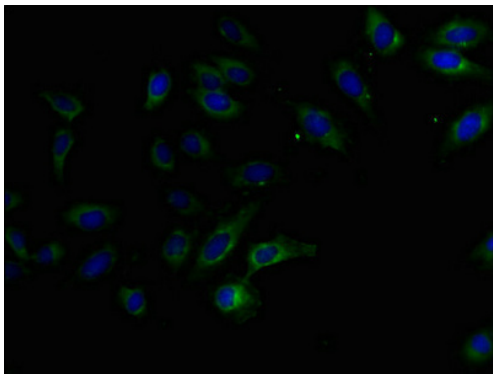


Anti-KIAA1467 antibody (ab236775) at 1/1000 dilution + Human placenta lysate

### Secondary

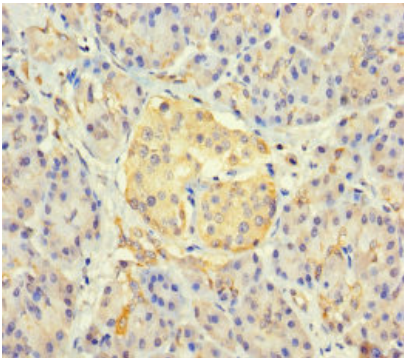
Goat polyclonal to rabbit IgG at 1/10000 dilution

**Predicted band size:** 67 kDa



Immunocytochemistry/ Immunofluorescence - Anti-KIAA1467 antibody (ab236775)

HeLa (human epithelial cell line from cervix adenocarcinoma) cells stained for KIAA1467 (green) using ab236775 at 1/100 dilution in ICC/IF, followed by Alexa Fluor 488<sup>®</sup> conjugated Goat Anti-Rabbit IgG (H+L).



Immunohistochemistry (Formalin/PFA-fixed paraffin-embedded sections) - Anti-KIAA1467 antibody (ab236775)

Paraffin-embedded human pancreatic tissue stained for KIAA1467 using ab236775 at 1/100 dilution in immunohistochemical analysis.

**Please note:** All products are "FOR RESEARCH USE ONLY. NOT FOR USE IN DIAGNOSTIC PROCEDURES"

### Our Promise to you: Quality guaranteed and expert technical support

---

- Replacement or refund for products not performing as stated on the datasheet
- Valid for 12 months from date of delivery
- Response to your inquiry within 24 hours
- We provide support in Chinese, English, French, German, Japanese and Spanish
- Extensive multi-media technical resources to help you

- We investigate all quality concerns to ensure our products perform to the highest standards

If the product does not perform as described on this datasheet, we will offer a refund or replacement. For full details of the Abpromise, please visit <https://www.abcam.com/abpromise> or contact our technical team.

### **Terms and conditions**

---

- Guarantee only valid for products bought direct from Abcam or one of our authorized distributors