

Product datasheet

Anti-KIF15 antibody ab90735

★☆☆☆☆ 1 Abreviews 1 Image

Overview

Product name	Anti-KIF15 antibody
Description	Rabbit polyclonal to KIF15
Host species	Rabbit
Tested applications	Suitable for: WB
Species reactivity	Reacts with: Human Predicted to work with: Mouse, Rat, Rabbit, Horse, Cow, Cat, Dog, Pig
Immunogen	A synthetic peptide corresponding to a region within internal sequence amino acids 1080 - 1129 (KKHSGLLQSAQEELTKKEALIQELQHKLNQKKEEVEQ KKNEYNFKMRQLE) of Human KIF15 (NP_064627) Run BLAST with Run BLAST with
Positive control	COLO205 cell lysate

Properties

Form	Liquid
Storage instructions	Shipped at 4°C. Upon delivery aliquot and store at -20°C. Avoid repeated freeze / thaw cycles.
Storage buffer	Preservative: 0.09% Sodium azide Constituents: PBS, 2% Sucrose
Purity	Immunogen affinity purified
Clonality	Polyclonal
Isotype	IgG

Applications

Our [Abpromise guarantee](#) covers the use of **ab90735** in the following tested applications.

The application notes include recommended starting dilutions; optimal dilutions/concentrations should be determined by the end user.

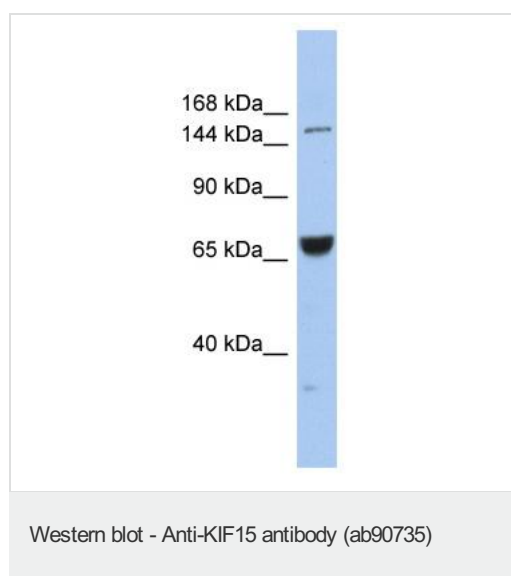
Application	Abreviews	Notes
WB		Use a concentration of 1 µg/ml. Predicted molecular weight: 160 kDa. Good results were obtained when blocked with 5% non-fat dry milk in 0.05% PBS-T.

Target

Relevance KIF15 belongs to the kinesin-like protein family and contains 1 kinesin-motor domain. KIF15 is the plus-end directed kinesin-like motor enzyme involved in mitotic spindle assembly.

Cellular localization Cytoplasmic, Cytoskeleton, Microtubule Note: Detected during the interphase in the cytoplasm as finely punctuate pattern and irregularly shaped dots. Detected during mitosis on the mitotic spindle. Colocalizes with TPX2 in mitosis. Localizes at the central spindle at anaphase.

Images



Anti-KIF15 antibody (ab90735) at 1 µg/ml (in 5% skim milk / PBS buffer) + COLO205 cell lysate at 10 µg

Secondary

HRP conjugated anti-Rabbit IgG at 1/50000 dilution

Predicted band size: 160 kDa

Gel concentration: 6-18%

Please note: All products are "FOR RESEARCH USE ONLY. NOT FOR USE IN DIAGNOSTIC PROCEDURES"

Our Abpromise to you: Quality guaranteed and expert technical support

- Replacement or refund for products not performing as stated on the datasheet
- Valid for 12 months from date of delivery
- Response to your inquiry within 24 hours
- We provide support in Chinese, English, French, German, Japanese and Spanish
- Extensive multi-media technical resources to help you
- We investigate all quality concerns to ensure our products perform to the highest standards

If the product does not perform as described on this datasheet, we will offer a refund or replacement. For full details of the Abpromise, please visit <https://www.abcam.com/abpromise> or contact our technical team.

Terms and conditions

- Guarantee only valid for products bought direct from Abcam or one of our authorized distributors