

Product datasheet

Anti-KIF20A antibody ab264155

1 Image

Overview

Product name	Anti-KIF20A antibody
Description	Rabbit polyclonal to KIF20A
Host species	Rabbit
Tested applications	Suitable for: IP
Species reactivity	Reacts with: Human
Immunogen	Synthetic peptide within Human KIF20A aa 50-100. The exact sequence is proprietary. NP_005724.1 Database link: O95235
Positive control	IP: HeLa whole cell lysate.
General notes	<p>The Life Science industry has been in the grips of a reproducibility crisis for a number of years. Abcam is leading the way in addressing this with our range of recombinant monoclonal antibodies and knockout edited cell lines for gold-standard validation. Please check that this product meets your needs before purchasing.</p> <p>If you have any questions, special requirements or concerns, please send us an inquiry and/or contact our Support team ahead of purchase. Recommended alternatives for this product can be found below, along with publications, customer reviews and Q&As</p>

Properties

Form	Liquid
Storage instructions	Shipped at 4°C. Store at +4°C short term (1-2 weeks). Upon delivery aliquot. Store at -20°C. Avoid freeze / thaw cycle.
Storage buffer	pH: 7 Preservative: 0.09% Sodium azide Constituent: Tris citrate/phosphate
Purity	pH 7 to 8 Immunogen affinity purified
Clonality	Polyclonal
Isotype	IgG

Applications

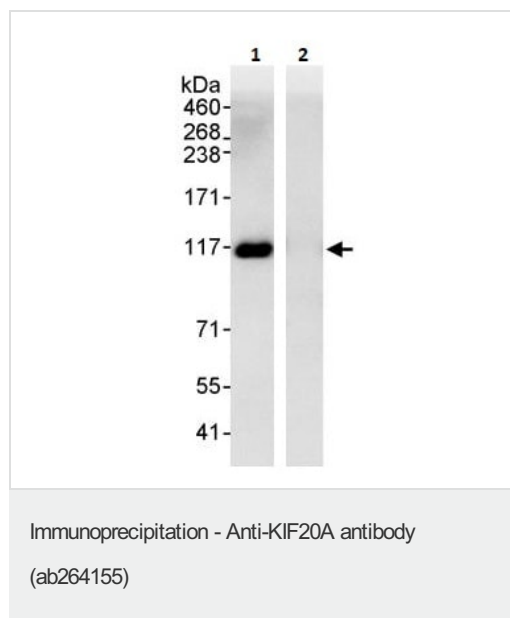
The Abpromise guarantee Our [Abpromise guarantee](#) covers the use of ab264155 in the following tested applications. The application notes include recommended starting dilutions; optimal dilutions/concentrations should be determined by the end user.

Application	Abreviews	Notes
IP		Use at 2-5 µg/mg of lysate.

Target

Function	Mitotic kinesin required for chromosome passenger complex (CPC)-mediated cytokinesis. Following phosphorylation by PLK1, involved in recruitment of PLK1 to the central spindle. Interacts with guanosine triphosphate (GTP)-bound forms of RAB6A and RAB6B. May act as a motor required for the retrograde RAB6 regulated transport of Golgi membranes and associated vesicles along microtubules. Has a microtubule plus end-directed motility.
Sequence similarities	Belongs to the kinesin-like protein family. Contains 1 kinesin-motor domain.
Post-translational modifications	Phosphorylated by PLK1 at Ser-528 during mitosis, creating a docking site for PLK1 and recruiting PLK1 at central spindle.
Cellular localization	Golgi apparatus. Cytoplasm > cytoskeleton > spindle.

Images



KIF20A was immunoprecipitated from 1 mg of HeLa (Human epithelial cell line from cervix adenocarcinoma) whole cell lysate with ab264155 at 3 µg/mg lysate. Western blot was performed from the immunoprecipitate using a different KIF20A antibody at 1 µg/ml.

Lane 1: ab264155 IP in HeLa whole cell lysate.

Lane 2: Control IgG.

Exposure time: 10 secs.

Please note: All products are "FOR RESEARCH USE ONLY. NOT FOR USE IN DIAGNOSTIC PROCEDURES"

Our Abpromise to you: Quality guaranteed and expert technical support

- Replacement or refund for products not performing as stated on the datasheet
- Valid for 12 months from date of delivery
- Response to your inquiry within 24 hours

- We provide support in Chinese, English, French, German, Japanese and Spanish
- Extensive multi-media technical resources to help you
- We investigate all quality concerns to ensure our products perform to the highest standards

If the product does not perform as described on this datasheet, we will offer a refund or replacement. For full details of the Abpromise, please visit <https://www.abcam.com/abpromise> or contact our technical team.

Terms and conditions

- Guarantee only valid for products bought direct from Abcam or one of our authorized distributors