

Product datasheet

Anti-KIF3A antibody ab11259

★★★★★ 11 Abreviews 19 References 7 Images

Overview

Product name	Anti-KIF3A antibody
Description	Rabbit polyclonal to KIF3A
Host species	Rabbit
Tested applications	Suitable for: WB, ICC/IF, IHC-P
Species reactivity	Reacts with: Mouse, Rat, Cow, Human
Immunogen	Synthetic peptide conjugated to KLH, corresponding to amino acids 682-701 of Mouse KIF3A. This sequence is identical in human.
Positive control	WB: HeLa and MDBK cell lysate. ICC/IF: Primary hippocampal neurons. IHC-P: Rat brain tissue; mouse brain tissue.
General notes	Storage in frost-free freezers is not recommended. If slight turbidity occurs upon prolonged storage, clarify the solution by centrifugation before use.

Properties

Form	Liquid
Storage instructions	Shipped at 4°C. Upon delivery aliquot and store at -20°C or -80°C. Avoid repeated freeze / thaw cycles.
Storage buffer	pH: 7.40 Preservative: 0.097% Sodium azide Constituent: 0.0268% PBS
Purity	IgG fraction
Purification notes	Whole antiserum is fractionated and then further purified by ion-exchange chromatography to provide the IgG fraction of antiserum that is essentially free of other rabbit serum proteins.
Clonality	Polyclonal
Isotype	IgG

Applications

Our [Abpromise guarantee](#) covers the use of **ab11259** in the following tested applications.

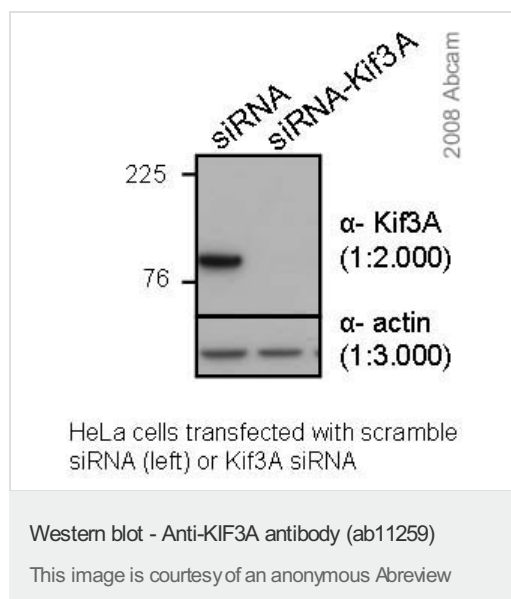
The application notes include recommended starting dilutions; optimal dilutions/concentrations should be determined by the end user.

Application	Abreviews	Notes
WB	★★★★★	1/2000. Predicted molecular weight: 85 kDa. This concentration is determined by blotting using a rat brain homogenate and a whole cell extract of rat pheochromocytoma PC12 cell line. Staining of KIF3A is specifically inhibited by the KIF3A immunizing peptide.
ICC/IF	★★★★☆	Use at an assay dependent concentration.
IHC-P		1/100.

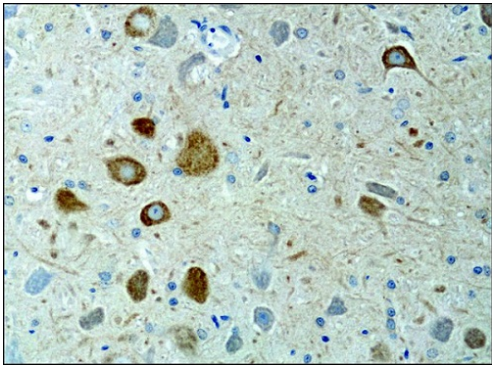
Target

Function	Microtubule-based anterograde translocator for membranous organelles. Plus end-directed microtubule sliding activity in vitro.
Sequence similarities	Belongs to the kinesin-like protein family. Kinesin II subfamily. Contains 1 kinesin-motor domain.
Cellular localization	Cytoplasm > cytoskeleton.

Images

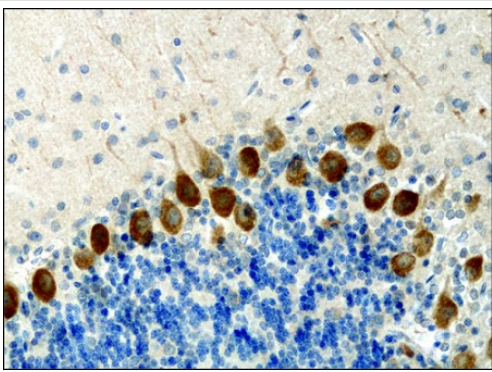


ab11259 (1/2000) detecting KIF3A in Human HeLa Cells. As a control, cells were transfected with scramble siRNA (left) and KIF3A siRNA (right). Please refer to abreview for further experimental details.



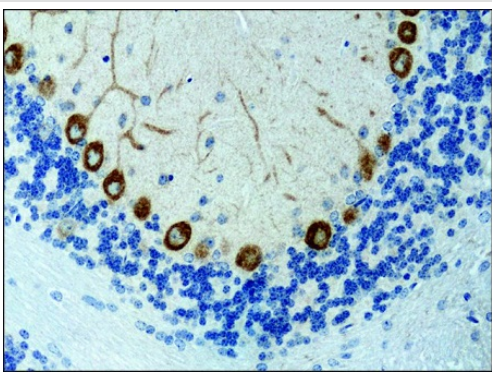
Immunohistochemistry (Formalin/PFA-fixed paraffin-embedded sections) - Anti-KIF3A antibody (ab11259)

Paraffin-embedded rat brain tissue stained for KIF3A with ab11259 at 0.1 µg/mL in immunohistochemical analysis.



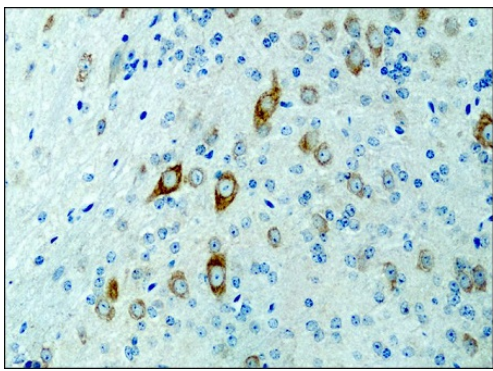
Immunohistochemistry (Formalin/PFA-fixed paraffin-embedded sections) - Anti-KIF3A antibody (ab11259)

Paraffin-embedded rat brain tissue stained for KIF3A with ab11259 at 0.1 µg/mL in immunohistochemical analysis.



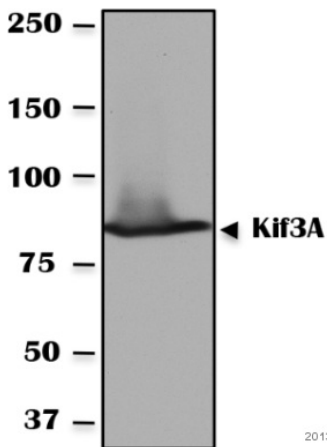
Immunohistochemistry (Formalin/PFA-fixed paraffin-embedded sections) - Anti-KIF3A antibody (ab11259)

Paraffin-embedded mouse brain tissue stained for KIF3A with ab11259 at 0.4 µg/mL in immunohistochemical analysis.



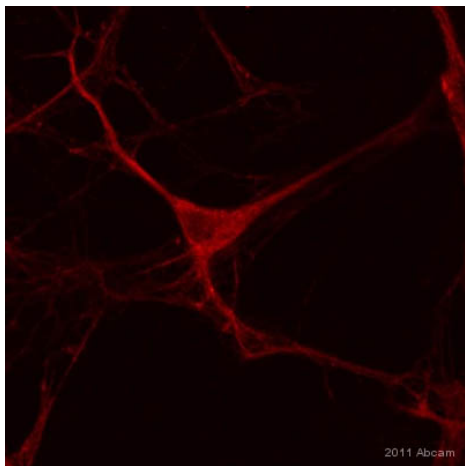
Immunohistochemistry (Formalin/PFA-fixed paraffin-embedded sections) - Anti-KIF3A antibody (ab11259)

Paraffin-embedded mouse brain tissue stained for KIF3A with ab11259 at 0.4 $\mu\text{g}/\text{mL}$ in immunohistochemical analysis.



Western blot - Anti-KIF3A antibody (ab11259)

This image is courtesy of an anonymous Abreview



Immunocytochemistry/ Immunofluorescence - Anti-KIF3A antibody (ab11259)

Image courtesy of an anonymous Abreview.

ab11259 staining KIF3A in murine primary hippocampal neurons by Immunocytochemistry/ Immunofluorescence.

Cells were fixed with methanol, blocked with 1% BSA for 1 hour at 22°C and then incubated with ab11259 at a 1/50 dilution for 2 hours at 22°C. The secondary used was a Cy3-conjugated donkey anti-rabbit polyclonal, used at a 1/500 dilution.

Please note: All products are "FOR RESEARCH USE ONLY AND ARE NOT INTENDED FOR DIAGNOSTIC OR THERAPEUTIC USE"

Our Abpromise to you: Quality guaranteed and expert technical support

- Replacement or refund for products not performing as stated on the datasheet
- Valid for 12 months from date of delivery
- Response to your inquiry within 24 hours
- We provide support in Chinese, English, French, German, Japanese and Spanish
- Extensive multi-media technical resources to help you
- We investigate all quality concerns to ensure our products perform to the highest standards

If the product does not perform as described on this datasheet, we will offer a refund or replacement. For full details of the Abpromise, please visit <https://www.abcam.com/abpromise> or contact our technical team.

Terms and conditions

- Guarantee only valid for products bought direct from Abcam or one of our authorized distributors