

Product datasheet

Anti-KIF3A antibody [EPR5087] α ab133587

Recombinant RabMAb

1 References 2 Images

Overview

Product name	Anti-KIF3A antibody [EPR5087]
Description	Rabbit monoclonal [EPR5087] to KIF3A
Host species	Rabbit
Tested applications	Suitable for: IP, WB Unsuitable for: Flow Cyt, ICC or IHC-P
Species reactivity	Reacts with: Mouse, Rat, Human
Immunogen	Synthetic peptide corresponding to residues in Human KIF3A (UniProt ID: Q9Y496).
Positive control	Fetal brain lysate, SH-SY5Y and 293T cell lysates
General notes	

This product is a recombinant monoclonal antibody, which offers several advantages including:

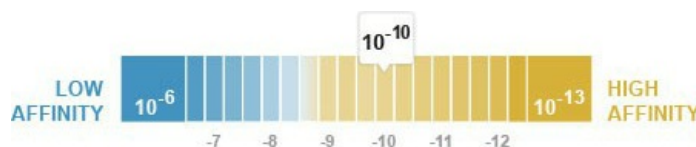
- High batch-to-batch consistency and reproducibility
- Improved sensitivity and specificity
- Long-term security of supply
- Animal-free production

For more information [see here](#).

Our RabMAb[®] technology is a patented hybridoma-based technology for making rabbit monoclonal antibodies. For details on our patents, please refer to [RabMAb[®] patents](#).

Properties

Form	Liquid
Storage instructions	Shipped at 4°C. Store at -20°C. Stable for 12 months at -20°C.
Dissociation constant (K_D)	K _D = 1.82 x 10 ⁻¹⁰ M



[Learn more about K_D](#)

Storage buffer	pH: 7.20 Preservative: 0.05% Sodium azide Constituents: 40% Glycerol, 9.85% Tris glycine, 50% Tissue culture supernatant
Purity	Tissue culture supernatant
Clonality	Monoclonal
Clone number	EPR5087
Isotype	IgG

Applications

Our [Abpromise guarantee](#) covers the use of **ab133587** in the following tested applications.

The application notes include recommended starting dilutions; optimal dilutions/concentrations should be determined by the end user.

Application	Abreviews	Notes
IP		1/10 - 1/100.
WB		1/1000 - 1/10000. Predicted molecular weight: 80 kDa.

Application notes Is unsuitable for Flow Cyt, ICC or IHC-P.

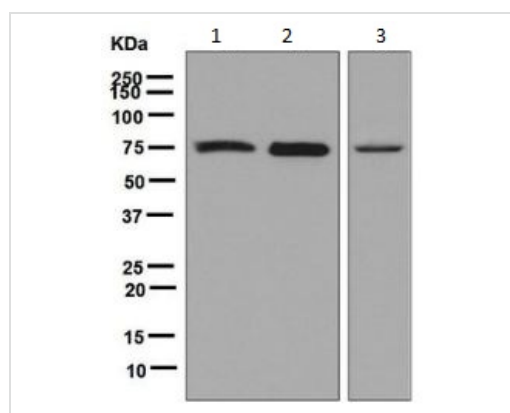
Target

Function Microtubule-based anterograde translocator for membranous organelles. Plus end-directed microtubule sliding activity in vitro.

Sequence similarities Belongs to the kinesin-like protein family. Kinesin II subfamily.
Contains 1 kinesin-motor domain.

Cellular localization Cytoplasm > cytoskeleton.

Images



Western blot - Anti-KIF3A antibody [EPR5087] (ab133587)

All lanes : Anti-KIF3A antibody [EPR5087] (ab133587) at 1/1000 dilution

Lane 1 : Fetal brain lysate

Lane 2 : SH-SY5Y cell lysate

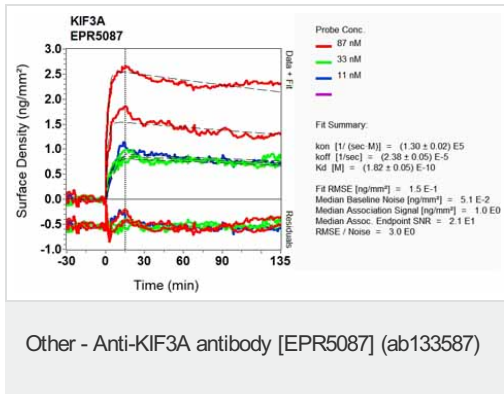
Lane 3 : 293T cell lysate

Lysates/proteins at 10 µg per lane.

Secondary

All lanes : HRP labelled Goat anti-Rabbit IgG at 1/2000 dilution

Predicted band size: 80 kDa



Equilibrium disassociation constant (K_D)

Learn more about K_D

[Click here to learn more about \$K_D\$](#)

Please note: All products are "FOR RESEARCH USE ONLY. NOT FOR USE IN DIAGNOSTIC PROCEDURES"

Our Abpromise to you: Quality guaranteed and expert technical support

- Replacement or refund for products not performing as stated on the datasheet
- Valid for 12 months from date of delivery
- Response to your inquiry within 24 hours
- We provide support in Chinese, English, French, German, Japanese and Spanish
- Extensive multi-media technical resources to help you
- We investigate all quality concerns to ensure our products perform to the highest standards

If the product does not perform as described on this datasheet, we will offer a refund or replacement. For full details of the Abpromise, please visit <https://www.abcam.com/abpromise> or contact our technical team.

Terms and conditions

- Guarantee only valid for products bought direct from Abcam or one of our authorized distributors