

Product datasheet

Anti-KIF5B antibody ab25715

★★★★☆ 2 Abreviews 3 References 2 Images

Overview

Product name	Anti-KIF5B antibody
Description	Rabbit polyclonal to KIF5B
Host species	Rabbit
Specificity	This antibody detects total level of endogenous kinesin protein.
Tested applications	Suitable for: ICC/IF, WB
Species reactivity	Reacts with: Mouse, Rat, Human, Pig
Immunogen	Recombinant fragment corresponding to Human KIF5B. Stalk domain of human KIF5B (amino acids 331-906) expressed in E. coli (FKHC3).

Properties

Form	Liquid
Storage instructions	Shipped at 4°C. Store at +4°C short term (1-2 weeks). Upon delivery aliquot. Store at -20°C long term.
Storage buffer	pH: 7.40 Preservative: 0.097% Sodium azide
Purity	Protein A purified
Purification notes	Purified from rabbit serum by affinity chromatography. > 95% pure (by SDS PAGE).
Clonality	Polyclonal
Isotype	IgG

Applications

Our [Abpromise guarantee](#) covers the use of **ab25715** in the following tested applications.

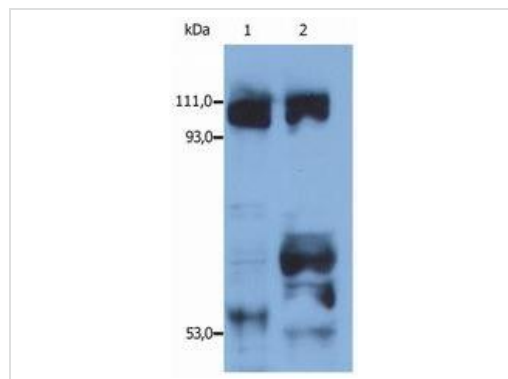
The application notes include recommended starting dilutions; optimal dilutions/concentrations should be determined by the end user.

Application	Abreviews	Notes
ICC/IF	★★★★☆	1/500.
WB	★★★★☆	1/1000. Predicted molecular weight: 110 kDa.

Target

Function	Microtubule-dependent motor required for normal distribution of mitochondria and lysosomes.
Sequence similarities	Belongs to the TRAFAC class myosin-kinesin ATPase superfamily. Kinesin family. Kinesin subfamily. Contains 1 kinesin motor domain.
Domain	Composed of three structural domains: a large globular N-terminal domain which is responsible for the motor activity of kinesin (it hydrolyzes ATP and binds microtubule), a central alpha-helical coiled coil domain that mediates the heavy chain dimerization; and a small globular C-terminal domain which interacts with other proteins (such as the kinesin light chains), vesicles and membranous organelles.
Cellular localization	Cytoplasm, cytoskeleton. Uniformly distributed between soma and neurites in hippocampal neurons.

Images



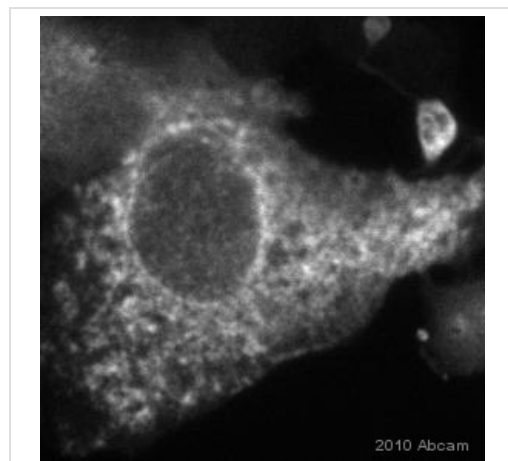
Western blot - Anti-KIF5B antibody (ab25715)

All lanes : Anti-KIF5B antibody (ab25715)

Lane 1 : Human HEK cell line

Lane 2 : Porcine brain

Predicted band size: 110 kDa



Immunocytochemistry/ Immunofluorescence - Anti-KIF5B antibody (ab25715)

This image is courtesy of an anonymous Abreview

ab25715 staining KIF5B in Human HeLa cells by ICC/IF (Immunocytochemistry/immunofluorescence). Cells were fixed with paraformaldehyde, permeabilized with 0.1% Triton and blocked with 0.1% BSA for 16 hours at 4°C. Samples were incubated with primary antibody (1/500 in PBS + 0.1% BSA) for 1 hour at 37°C. An Alexa Fluor®546-conjugated donkey anti-rabbit polyclonal (1/1000) was used as the secondary antibody.

Please note: All products are "FOR RESEARCH USE ONLY AND ARE NOT INTENDED FOR DIAGNOSTIC OR THERAPEUTIC USE"

Our Abpromise to you: Quality guaranteed and expert technical support

- Replacement or refund for products not performing as stated on the datasheet
- Valid for 12 months from date of delivery
- Response to your inquiry within 24 hours

- We provide support in Chinese, English, French, German, Japanese and Spanish
- Extensive multi-media technical resources to help you
- We investigate all quality concerns to ensure our products perform to the highest standards

If the product does not perform as described on this datasheet, we will offer a refund or replacement. For full details of the Abpromise, please visit <https://www.abcam.com/abpromise> or contact our technical team.

Terms and conditions

- Guarantee only valid for products bought direct from Abcam or one of our authorized distributors