




Product datasheet

Anti-KIF7 antibody ab95884

★★★★★ 1 Abreviews 2 References 1 Image

Overview

Product name	Anti-KIF7 antibody
Description	Rabbit polyclonal to KIF7
Host species	Rabbit
Tested applications	Suitable for: WB
Species reactivity	<p>Reacts with: Human</p> <p>Predicted to work with: Rhesus monkey, Gorilla, Orangutan </p>
Immunogen	<p>Synthetic peptide designed within residues: KRSLCSEGRQ APGNEDELHL APELLWLSPL TEGAPRTREE TRDLVHAPLP L, corresponding to amino acids 1225-1275 of Human KIF7 (NP_940927.2)</p> <p> Run BLAST with ExPASy  Run BLAST with NCBI</p>
Positive control	HeLa or 293T cell lysate
General notes	<p>Shelf Life: 1 year from date of receipt</p> <p>Reproducibility is key to advancing scientific discovery and accelerating scientists' next breakthrough.</p> <p>Abcam is leading the way with our range of recombinant antibodies, knockout-validated antibodies and knockout cell lines, all of which support improved reproducibility.</p> <p>We are also planning to innovate the way in which we present recommended applications and species on our product datasheets, so that only applications & species that have been tested in our own labs, our suppliers or by selected trusted collaborators are covered by our Abpromise™ guarantee.</p> <p>In preparation for this, we have started to update the applications & species that this product is Abpromise guaranteed for.</p> <p>We are also updating the applications & species that this product has been “predicted to work with,” however this information is not covered by our Abpromise guarantee.</p> <p>Applications & species from publications and Abreviews that have not been tested in our own labs or in those of our suppliers are not covered by the Abpromise guarantee.</p> <p>Please check that this product meets your needs before purchasing. If you have any questions, special requirements or concerns, please send us an inquiry and/or contact our Support team ahead of purchase. Recommended alternatives for this product can be found below, as well as customer reviews and Q&As.</p>


Properties

Form	Liquid
Storage instructions	Shipped at 4°C. The product can be stored for up to 12 months.
Storage buffer	pH: 7 Preservative: 0.09% Sodium azide Constituent: Tris citrate/phosphate
Purity	Immunogen affinity purified
Clonality	Polyclonal
Isotype	IgG

Applications

Our [Abpromise guarantee](#) covers the use of **ab95884** in the following tested applications.

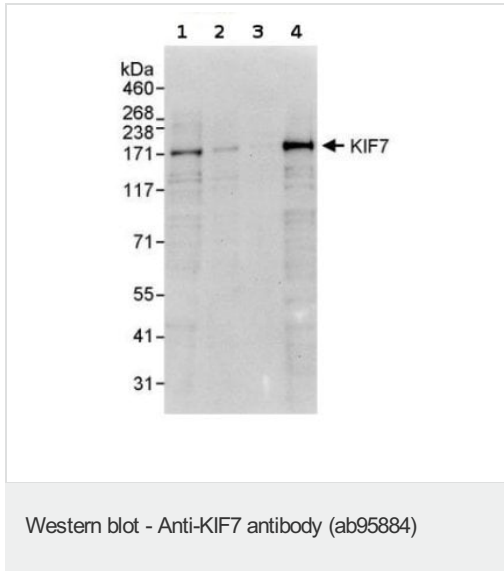
The application notes include recommended starting dilutions; optimal dilutions/concentrations should be determined by the end user.

Application	Abreviews	Notes
WB		1/2000 - 1/10000. Predicted molecular weight: 151 kDa.

Target

Function	Acts as both a negative and positive regulator of sonic hedgehog (Shh) pathway, acting downstream of SMO. Negatively regulates the pathway by preventing inappropriate activation of the transcriptional activator GLI2 in the absence of ligand. Positively regulates the pathway by preventing the processing of the transcription factor GLI3 into its repressor form. Required for efficient localization of GLI3 to cilia in response to Shh. May also act as a ciliary motor.
Tissue specificity	Embryonic stem cells, melanotic melanoma and Jurkat T-cells.
Sequence similarities	Belongs to the kinesin-like protein family. KIF27 subfamily. Contains 1 kinesin-motor domain.
Cellular localization	Cell projection > cilium. SMO is required for its accumulation within cilia. Moves from the cilia base to the cilia tip in response to activation of the Shh pathway.

Images



All lanes : Anti-KIF7 antibody (ab95884) at 0.4 µg/ml

Lane 1 : HeLa whole cell lysate at 50 µg

Lane 2 : HeLa whole cell lysate at 15 µg

Lane 3 : HeLa whole cell lysate at 5 µg

Lane 4 : 293T whole cell lysate at 50 µg

Developed using the ECL technique.

Predicted band size: 151 kDa

Exposure time: 30 seconds

Please note: All products are "FOR RESEARCH USE ONLY. NOT FOR USE IN DIAGNOSTIC PROCEDURES"

Our Abpromise to you: Quality guaranteed and expert technical support

- Replacement or refund for products not performing as stated on the datasheet
- Valid for 12 months from date of delivery
- Response to your inquiry within 24 hours
- We provide support in Chinese, English, French, German, Japanese and Spanish
- Extensive multi-media technical resources to help you
- We investigate all quality concerns to ensure our products perform to the highest standards

If the product does not perform as described on this datasheet, we will offer a refund or replacement. For full details of the Abpromise, please visit <https://www.abcam.com/abpromise> or contact our technical team.

Terms and conditions

- Guarantee only valid for products bought direct from Abcam or one of our authorized distributors