


Product datasheet

Anti-KIR3DL1 antibody [2C3B6] ab233780

4 Images

Overview

Product name	Anti-KIR3DL1 antibody [2C3B6]
Description	Mouse monoclonal [2C3B6] to KIR3DL1
Host species	Mouse
Tested applications	Suitable for: WB, IHC-P, Flow Cyt
Species reactivity	Reacts with: Human
Immunogen	<p>Recombinant fragment corresponding to Human KIR3DL1 aa 206-340. Expressed in E.coli. Sequence:</p> <p>LSAPSDPLDIVTGPYEKPSLSAQPGPKVQAGESVTLSC SSRSSYDMYHL SREGGAHERRLPAVRKVNRTFQADFPLGPATHGGTYRCF GSFRHSPYEWS DPSDPLLVSVTGNPSSSWPSPTEPSSKSGNPRHLH</p> <p>Database link: P43629</p> <p style="text-align: right;">  Run BLAST with  Run BLAST with </p>
Positive control	WB: Recombinant human KIR3DL1 (aa 206-340) protein; Human KIR3DL1 (aa 206-340)-hlgG-Fc-transfected HEK-293 cell lysate. IHC-P: Human cervical cancer tissue. Flow cyt: HL-60 cells.
General notes	<p>Reproducibility is key to advancing scientific discovery and accelerating scientists' next breakthrough.</p> <p>Abcam is leading the way with our range of recombinant antibodies, knockout-validated antibodies and knockout cell lines, all of which support improved reproducibility.</p> <p>We are also planning to innovate the way in which we present recommended applications and species on our product datasheets, so that only applications & species that have been tested in our own labs, our suppliers or by selected trusted collaborators are covered by our Abpromise™ guarantee.</p> <p>In preparation for this, we have started to update the applications & species that this product is Abpromise guaranteed for.</p> <p>We are also updating the applications & species that this product has been “predicted to work with,” however this information is not covered by our Abpromise guarantee.</p> <p>Applications & species from publications and Abreviews that have not been tested in our own labs or in those of our suppliers are not covered by the Abpromise guarantee.</p> <p>Please check that this product meets your needs before purchasing. If you have any questions,</p>

special requirements or concerns, please send us an inquiry and/or contact our Support team ahead of purchase. Recommended alternatives for this product can be found below, as well as customer reviews and Q&As.

Properties

Form	Liquid
Storage instructions	Shipped at 4°C. Store at +4°C short term (1-2 weeks). Upon delivery aliquot. Store at -20°C long term. Avoid freeze / thaw cycle.
Storage buffer	Preservative: 0.05% Sodium azide Constituent: PBS
Purity	Protein G purified
Purification notes	Purified from tissue culture supernatant.
Clonality	Monoclonal
Clone number	2C3B6
Isotype	IgG1

Applications

Our [Abpromise guarantee](#) covers the use of **ab233780** in the following tested applications.

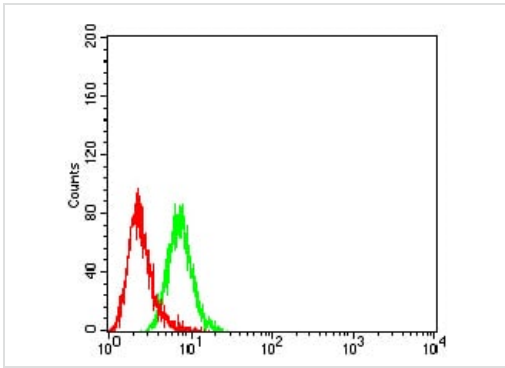
The application notes include recommended starting dilutions; optimal dilutions/concentrations should be determined by the end user.

Application	Abreviews	Notes
WB		1/500 - 1/2000. Predicted molecular weight: 49 kDa.
IHC-P		1/200 - 1/1000.
Flow Cyt		1/200 - 1/400.

Target

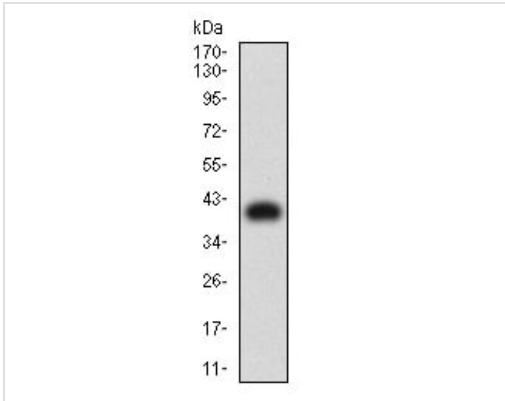
Function	Receptor on natural killer (NK) cells for HLA Bw4 allele. Inhibits the activity of NK cells thus preventing cell lysis.
Sequence similarities	Belongs to the immunoglobulin superfamily. Contains 3 Ig-like C2-type (immunoglobulin-like) domains.
Cellular localization	Cell membrane.

Images



Flow Cytometry - Anti-KIR3DL1 antibody [2C3B6] (ab233780)

Flow cytometric analysis of HL-60 (human promyelocytic leukemia cell line) cells labeling KIR3DL1 with ab233780 at 1/200 dilution (green) compared with a negative control (red).

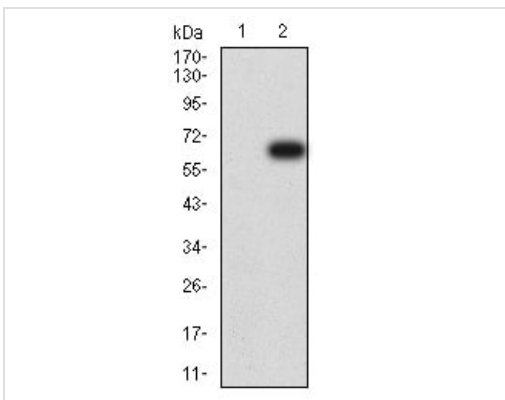


Western blot - Anti-KIR3DL1 antibody [2C3B6] (ab233780)

Anti-KIR3DL1 antibody [2C3B6] (ab233780) at 1/500 dilution + Recombinant human KIR3DL1 (aa 206-340) protein

Predicted band size: 49 kDa

Expected MW is 40.5 kDa.



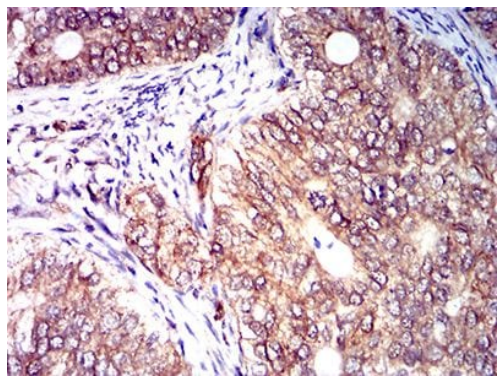
Western blot - Anti-KIR3DL1 antibody [2C3B6] (ab233780)

All lanes : Anti-KIR3DL1 antibody [2C3B6] (ab233780) at 1/500 dilution

Lane 1 : Untransfected HEK-293 (human epithelial cell line from embryonic kidney) cell lysate

Lane 2 : Human KIR3DL1 (aa 206-340)-hlgG-Fc-transfected HEK-293 cell lysate

Predicted band size: 49 kDa



Paraffin-embedded human cervical cancer tissue stained for KIR3DL1 using ab233780 at 1/200 dilution in immunohistochemical analysis. DAB staining.

Immunohistochemistry (Formalin/PFA-fixed paraffin-embedded sections) - Anti-KIR3DL1 antibody [2C3B6] (ab233780)

Please note: All products are "FOR RESEARCH USE ONLY. NOT FOR USE IN DIAGNOSTIC PROCEDURES"

Our Abpromise to you: Quality guaranteed and expert technical support

- Replacement or refund for products not performing as stated on the datasheet
- Valid for 12 months from date of delivery
- Response to your inquiry within 24 hours

- We provide support in Chinese, English, French, German, Japanese and Spanish
- Extensive multi-media technical resources to help you
- We investigate all quality concerns to ensure our products perform to the highest standards

If the product does not perform as described on this datasheet, we will offer a refund or replacement. For full details of the Abpromise, please visit <https://www.abcam.com/abpromise> or contact our technical team.

Terms and conditions

- Guarantee only valid for products bought direct from Abcam or one of our authorized distributors