

Product datasheet

Anti-KIRREL2 antibody ab93451

1 Image

Overview

Product name	Anti-KIRREL2 antibody
Description	Rabbit polyclonal to KIRREL2
Host species	Rabbit
Tested applications	Suitable for: WB
Species reactivity	Reacts with: Mouse
Immunogen	Synthetic peptide corresponding to Mouse KIRREL2 aa 50-150 conjugated to keyhole limpet haemocyanin. (Peptide available as ab103265)
Positive control	This antibody gave a positive signal in Mouse Kidney Tissue Lysate.

Properties

Form	Liquid
Storage instructions	Shipped at 4°C. Store at +4°C short term (1-2 weeks). Upon delivery aliquot. Store at -20°C or -80°C. Avoid freeze / thaw cycle.
Storage buffer	Preservative: 0.02% Sodium Azide Constituents: 1% BSA, PBS, pH 7.4
Purity	Immunogen affinity purified
Clonality	Polyclonal
Isotype	IgG

Applications

Our [Abpromise guarantee](#) covers the use of **ab93451** in the following tested applications.

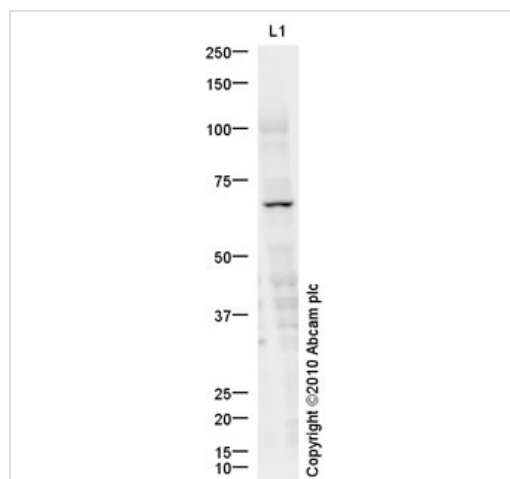
The application notes include recommended starting dilutions; optimal dilutions/concentrations should be determined by the end user.

Application	Abreviews	Notes
WB		Use a concentration of 1 µg/ml. Detects a band of approximately 62 kDa (predicted molecular weight: 75 kDa).

Target

Tissue specificity	Highly expressed in beta-cells of the pancreatic islets.
Sequence similarities	Belongs to the immunoglobulin superfamily. Contains 5 Ig-like C2-type (immunoglobulin-like) domains.
Cellular localization	Cell membrane.

Images



Western blot - Anti-KIRREL2 antibody (ab93451)

Anti-KIRREL2 antibody (ab93451) at 1 µg/ml + Kidney (Mouse)
Tissue Lysate at 10 µg

Secondary

Goat Anti-Rabbit IgG H&L (HRP) preadsorbed (ab97080) at
1/5000 dilution

Developed using the ECL technique.

Performed under reducing conditions.

Predicted band size: 75 kDa

Observed band size: 62 kDa

[why is the actual band size different from the predicted?](#)

Exposure time: 20 minutes

Other antibodies to KIRREL2 detect a band around 62-kDa.

Please note: All products are "FOR RESEARCH USE ONLY. NOT FOR USE IN DIAGNOSTIC PROCEDURES"

Our Abpromise to you: Quality guaranteed and expert technical support

- Replacement or refund for products not performing as stated on the datasheet
- Valid for 12 months from date of delivery
- Response to your inquiry within 24 hours
- We provide support in Chinese, English, French, German, Japanese and Spanish
- Extensive multi-media technical resources to help you
- We investigate all quality concerns to ensure our products perform to the highest standards

If the product does not perform as described on this datasheet, we will offer a refund or replacement. For full details of the Abpromise, please visit <https://www.abcam.com/abpromise> or contact our technical team.

Terms and conditions

- Guarantee only valid for products bought direct from Abcam or one of our authorized distributors