


Product datasheet

Anti-KLC1 antibody ab230859

3 Images

Overview

---

<b>Product name</b>	Anti-KLC1 antibody
<b>Description</b>	Rabbit polyclonal to KLC1
<b>Host species</b>	Rabbit
<b>Tested applications</b>	<b>Suitable for:</b> WB, IHC-P, Flow Cyt
<b>Species reactivity</b>	<b>Reacts with:</b> Human <b>Predicted to work with:</b> Rat 
<b>Immunogen</b>	Synthetic peptide within Human KLC1 aa 389-415 conjugated to keyhole limpet haemocyanin. The exact sequence is proprietary. Database link: <a href="#">Q07866</a>
<b>Positive control</b>	WB: HeLa cell lysate. IHC-P: Human cerebellum tissue. Flow Cyt: WiDr cells.
<b>General notes</b>	<p>Reproducibility is key to advancing scientific discovery and accelerating scientists' next breakthrough.</p> <p>Abcam is leading the way with our range of recombinant antibodies, knockout-validated antibodies and knockout cell lines, all of which support improved reproducibility.</p> <p>We are also planning to innovate the way in which we present recommended applications and species on our product datasheets, so that only applications &amp; species that have been tested in our own labs, our suppliers or by selected trusted collaborators are covered by our Abpromise™ guarantee.</p> <p>In preparation for this, we have started to update the applications &amp; species that this product is Abpromise guaranteed for.</p> <p>We are also updating the applications &amp; species that this product has been “predicted to work with,” however this information is not covered by our Abpromise guarantee.</p> <p>Applications &amp; species from publications and Abreviews that have not been tested in our own labs or in those of our suppliers are not covered by the Abpromise guarantee.</p> <p>Please check that this product meets your needs before purchasing. If you have any questions, special requirements or concerns, please send us an inquiry and/or contact our Support team ahead of purchase. Recommended alternatives for this product can be found below, as well as customer reviews and Q&amp;As.</p>

Properties

---

<b>Form</b>	Liquid
<b>Storage instructions</b>	Shipped at 4°C. Store at +4°C short term (1-2 weeks). Upon delivery aliquot. Store at -20°C long term. Avoid freeze / thaw cycle.
<b>Storage buffer</b>	Preservative: 0.09% Sodium azide Constituent: PBS
<b>Purity</b>	Protein A purified
<b>Clonality</b>	Polyclonal
<b>Isotype</b>	IgG

## Applications

Our [Abpromise guarantee](#) covers the use of **ab230859** in the following tested applications.

The application notes include recommended starting dilutions; optimal dilutions/concentrations should be determined by the end user.

Application	Abreviews	Notes
WB		1/1000. Predicted molecular weight: 65 kDa.
IHC-P		1/50 - 1/100.
Flow Cyt		1/10 - 1/50.

## Target

<b>Function</b>	Kinesin is a microtubule-associated force-producing protein that may play a role in organelle transport. The light chain may function in coupling of cargo to the heavy chain or in the modulation of its ATPase activity.
<b>Tissue specificity</b>	Found in a variety of tissues. Mostly abundant in brain and spine.
<b>Sequence similarities</b>	Belongs to the kinesin light chain family. Contains 6 TPR repeats.
<b>Post-translational modifications</b>	Isoform I is phosphorylated on Ser-600. Isoform J is phosphorylated on Ser-631.
<b>Cellular localization</b>	Cytoplasm > cytoskeleton.

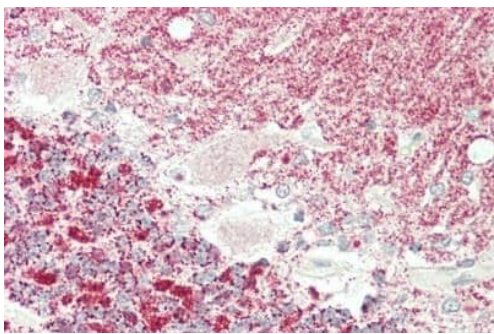
## Images



Western blot - Anti-KLC1 antibody (ab230859)

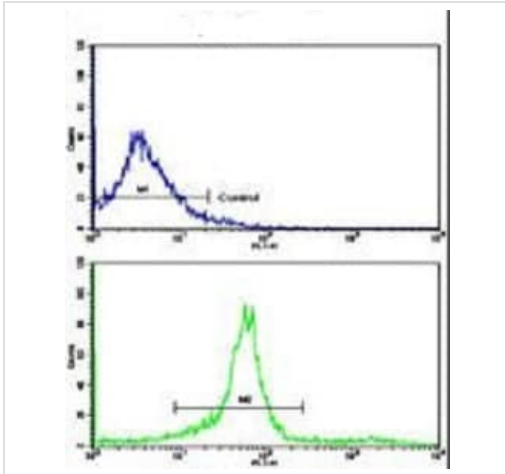
Anti-KLC1 antibody (ab230859) at 1/1000 dilution + HeLa (human epithelial cell line from cervix adenocarcinoma) cell lysate. at 35  $\mu$ g

**Predicted band size:** 65 kDa



Immunohistochemistry (Formalin/PFA-fixed paraffin-embedded sections) - Anti-KLC1 antibody (ab230859)

Formalin-fixed, paraffin-embedded human cerebellum tissue stained for KLC1 using ab230859 at 1/50 dilution in immunohistochemical analysis.



Flow Cytometry - Anti-KLC1 antibody (ab230859)

Flow cytometric analysis of WiDr cells labeling KLC1 with ab230859 at 1/10 dilution (green) compared with a negative control (blue).

FITC-conjugated goat-anti-rabbit secondary antibodies were used.

**Please note:** All products are "FOR RESEARCH USE ONLY. NOT FOR USE IN DIAGNOSTIC PROCEDURES"

### Our Abpromise to you: Quality guaranteed and expert technical support

- Replacement or refund for products not performing as stated on the datasheet
- Valid for 12 months from date of delivery
- Response to your inquiry within 24 hours
- We provide support in Chinese, English, French, German, Japanese and Spanish
- Extensive multi-media technical resources to help you
- We investigate all quality concerns to ensure our products perform to the highest standards

If the product does not perform as described on this datasheet, we will offer a refund or replacement. For full details of the Abpromise, please visit <https://www.abcam.com/abpromise> or contact our technical team.

### Terms and conditions

- Guarantee only valid for products bought direct from Abcam or one of our authorized distributors