

Product datasheet

Anti-KLF15 antibody ab167192

1 References 2 Images

Overview

Product name	Anti-KLF15 antibody
Description	Mouse polyclonal to KLF15
Host species	Mouse
Tested applications	Suitable for: WB, ICC/IF
Species reactivity	Reacts with: Human
Immunogen	Recombinant full protein, corresponding to amino acids 1-416 of Human KLF15 (NP_054798.1). Run BLAST with ExPASy Run BLAST with NCBI
Positive control	Lysate of 293T cells transfected with KLF15; HepG2 cells.

Properties

Form	Liquid
Storage instructions	Shipped at 4°C. Store at +4°C short term (1-2 weeks). Upon delivery aliquot. Store at -20°C long term.
Storage buffer	pH: 7.20 Constituent: 99% PBS
Purity	Protein A purified
Clonality	Polyclonal
Isotype	IgG

Applications

Our [Abpromise guarantee](#) covers the use of **ab167192** in the following tested applications.

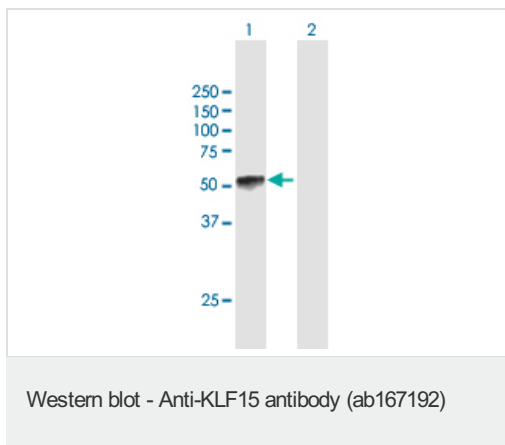
The application notes include recommended starting dilutions; optimal dilutions/concentrations should be determined by the end user.

Application	Abreviews	Notes
WB		Use a concentration of 1 µg/ml. Predicted molecular weight: 44 kDa.
ICC/IF		Use a concentration of 10 µg/ml.

Target

Function	Transcriptional activator. Binds to the GA element of the CLCNKA promoter.
Tissue specificity	Highly expressed in liver, followed by heart, skeletal muscle, and kidney. Not expressed in bone marrow or lymphoid tissues.
Sequence similarities	Belongs to the Sp1 C2H2-type zinc-finger protein family. Contains 3 C2H2-type zinc fingers.
Cellular localization	Nucleus.

Images



All lanes : Anti-KLF15 antibody (ab167192) at 1 µg/ml

Lane 1 : Lysate of 293T cells transfected with KLF15

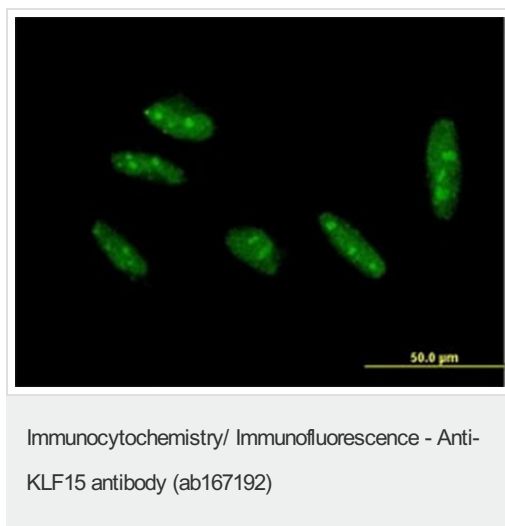
Lane 2 : Lysate of 293T cells (non-transfected)

Lysates/proteins at 15 µl per lane.

Secondary

All lanes : Goat anti-mouse HRP conjugated antibody at 1/2500 dilution

Predicted band size: 44 kDa



Immunofluorescent analysis of HepG2 cells labeling KLF15 with ab167192 at 10 µg/ml.

Please note: All products are "FOR RESEARCH USE ONLY. NOT FOR USE IN DIAGNOSTIC PROCEDURES"

Our Abpromise to you: Quality guaranteed and expert technical support

- Replacement or refund for products not performing as stated on the datasheet

- Valid for 12 months from date of delivery
- Response to your inquiry within 24 hours

- We provide support in Chinese, English, French, German, Japanese and Spanish
- Extensive multi-media technical resources to help you
- We investigate all quality concerns to ensure our products perform to the highest standards

If the product does not perform as described on this datasheet, we will offer a refund or replacement. For full details of the Abpromise, please visit <https://www.abcam.com/abpromise> or contact our technical team.

Terms and conditions

- Guarantee only valid for products bought direct from Abcam or one of our authorized distributors