


Product datasheet

Anti-KLHL6 antibody ab99093

2 Images

Overview

Product name	Anti-KLHL6 antibody
Description	Goat polyclonal to KLHL6
Host species	Goat
Tested applications	Suitable for: WB
Species reactivity	Reacts with: Mouse, Human Predicted to work with: Rat 
Immunogen	Synthetic peptide: SERTKPRMHEFQSE by a Cysteine residue linker, corresponding to internal sequence amino acids 306-319 of Human KLHL6 (NP_569713.2) Run BLAST with Run BLAST with
Positive control	NIH3T3 lysate

Properties

Form	Liquid
Storage instructions	Shipped at 4°C. Upon delivery aliquot and store at -20°C. Avoid freeze / thaw cycles.
Storage buffer	pH: 7.30 Preservative: 0.02% Sodium azide Constituents: 0.5% Tris buffered saline, 0.5% BSA
Purity	Immunogen affinity purified
Purification notes	Purified from goat serum by ammonium sulphate precipitation followed by antigen affinity chromatography using the immunizing peptide.
Clonality	Polyclonal
Isotype	IgG

Applications

Our [Abpromise guarantee](#) covers the use of **ab99093** in the following tested applications.

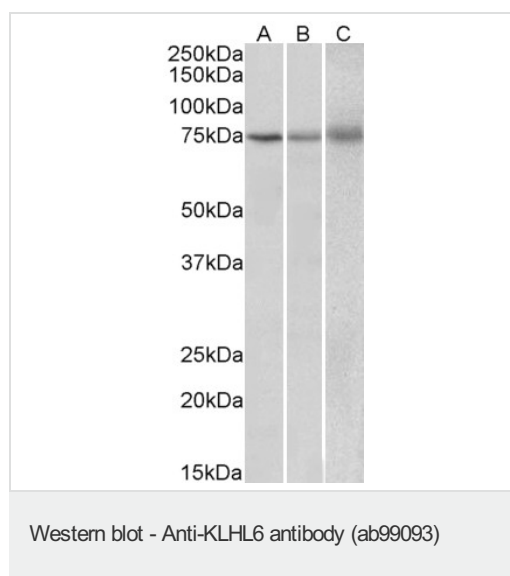
The application notes include recommended starting dilutions; optimal dilutions/concentrations should be determined by the end user.

Application	Abreviews	Notes
WB		Use a concentration of 1 - 3 µg/ml. Predicted molecular weight: 70 kDa.

Target

Function	Involved in B-lymphocyte antigen receptor signaling and germinal center formation.
Tissue specificity	Found in germinal center B-cells.
Sequence similarities	Contains 1 BACK (BTB/Kelch associated) domain. Contains 1 BTB (POZ) domain. Contains 6 Kelch repeats.

Images



All lanes : Anti-KLHL6 antibody (ab99093) at 2 µg/ml

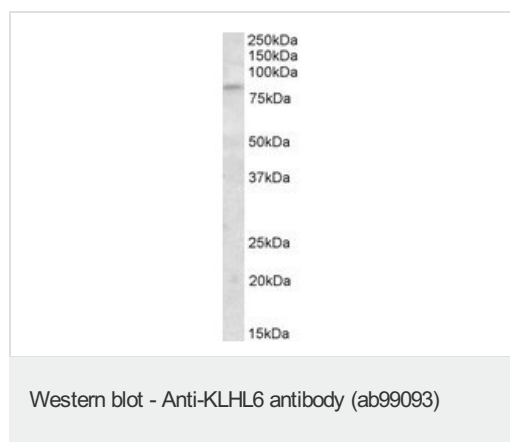
Lane 1 : Human spleen lysates

Lane 2 : Mouse spleen lysates

Lane 3 : Rat spleen lysates

Lysates/proteins at 35 µg per lane.

Predicted band size: 70 kDa



Anti-KLHL6 antibody (ab99093) at 1 µg/ml (incubated for 1 hour) + NIH3T3 lysate in RIPA buffer at 35 µg

Developed using the ECL technique.

Predicted band size: 70 kDa

Please note: All products are "FOR RESEARCH USE ONLY. NOT FOR USE IN DIAGNOSTIC PROCEDURES"

Our Abpromise to you: Quality guaranteed and expert technical support

- Replacement or refund for products not performing as stated on the datasheet
- Valid for 12 months from date of delivery
- Response to your inquiry within 24 hours

- We provide support in Chinese, English, French, German, Japanese and Spanish
- Extensive multi-media technical resources to help you
- We investigate all quality concerns to ensure our products perform to the highest standards

If the product does not perform as described on this datasheet, we will offer a refund or replacement. For full details of the Abpromise, please visit <https://www.abcam.com/abpromise> or contact our technical team.

Terms and conditions

- Guarantee only valid for products bought direct from Abcam or one of our authorized distributors