




Product datasheet

Anti-KLHL7 antibody ab229971

2 Images

Overview

<b>Product name</b>	Anti-KLHL7 antibody
<b>Description</b>	Rabbit polyclonal to KLHL7
<b>Host species</b>	Rabbit
<b>Tested applications</b>	<b>Suitable for:</b> IHC-P
<b>Species reactivity</b>	<b>Reacts with:</b> Human <b>Predicted to work with:</b> Mouse, Rat, Chicken 
<b>Immunogen</b>	Recombinant fragment corresponding to Human KLHL7 aa 427-586 (internal sequence). Sequence: ANGLIYVCGGSLGNNVSGRVLNSCEVYDPATETWTEL CPMIEARKNHGLV FVKDKIFAVGGQNGLGGLDNVEYYDIKLNEWKMOVSPM PWKGVTVKCAAVG SIYVLAGFQGVGRLGHILEYNTETDKWVANSKVRAFP VTSC ICVVDTCGANEETLET  Database link: <a href="#">Q8IXQ5</a>   <a href="#">Run BLAST with</a>  <a href="#">Run BLAST with</a>
<b>Positive control</b>	IHC-P: Human colon cancer and human heart tissues.

Properties

<b>Form</b>	Liquid
<b>Storage instructions</b>	Shipped at 4°C. Store at +4°C short term (1-2 weeks). Upon delivery aliquot. Store at -20°C long term. Avoid freeze / thaw cycle.
<b>Storage buffer</b>	pH: 7.3 Preservative: 0.02% Sodium azide Constituents: PBS, 50% Glycerol
<b>Purity</b>	Immunogen affinity purified
<b>Clonality</b>	Polyclonal
<b>Isotype</b>	IgG

## Applications

Our [Abpromise guarantee](#) covers the use of **ab229971** in the following tested applications.

The application notes include recommended starting dilutions; optimal dilutions/concentrations should be determined by the end user.

Application	Abreviews	Notes
IHC-P		1/20 - 1/200.

## Target

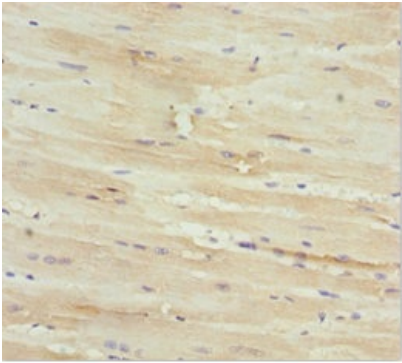
### Relevance

KLHL7 is widely expressed, with highest levels in adult and fetal heart, CNS and adult testis. It contains 1 BTB (POZ) domain and 6 Kelch repeats.

### Cellular localization

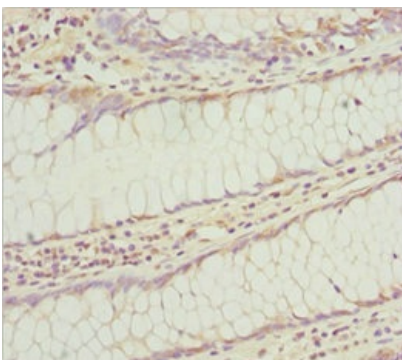
Nucleus.

## Images



Immunohistochemistry (Formalin/PFA-fixed paraffin-embedded sections) - Anti-KLHL7 antibody (ab229971)

Paraffin-embedded human heart tissue stained for KLHL7 using ab229971 at 1/100 dilution in immunohistochemical analysis.



Immunohistochemistry (Formalin/PFA-fixed paraffin-embedded sections) - Anti-KLHL7 antibody (ab229971)

Paraffin-embedded human colon cancer tissue stained for KLHL7 using ab229971 at 1/100 dilution in immunohistochemical analysis.

**Please note:** All products are "FOR RESEARCH USE ONLY. NOT FOR USE IN DIAGNOSTIC PROCEDURES"

### **Our Abpromise to you: Quality guaranteed and expert technical support**

---

- Replacement or refund for products not performing as stated on the datasheet
- Valid for 12 months from date of delivery
- Response to your inquiry within 24 hours
  
- We provide support in Chinese, English, French, German, Japanese and Spanish
- Extensive multi-media technical resources to help you
- We investigate all quality concerns to ensure our products perform to the highest standards

If the product does not perform as described on this datasheet, we will offer a refund or replacement. For full details of the Abpromise, please visit <https://www.abcam.com/abpromise> or contact our technical team.

### **Terms and conditions**

---

- Guarantee only valid for products bought direct from Abcam or one of our authorized distributors