

Product datasheet

Anti-KLRF1 antibody [EPR23633-150] ab256809

Recombinant RabMAb

2 Images

Overview

Product name	Anti-KLRF1 antibody [EPR23633-150]
Description	Rabbit monoclonal [EPR23633-150] to KLRF1
Host species	Rabbit
Tested applications	Suitable for: Flow Cyt Unsuitable for: ICC,IHC-P,IP or WB
Species reactivity	Reacts with: Human
Immunogen	Recombinant fragment within Human KLRF1 aa 50 to the C-terminus. The exact sequence is proprietary. Database link: Q9NZS2
Positive control	Flow cyt: Human peripheral blood mononuclear cells.
General notes	This product is a recombinant monoclonal antibody, which offers several advantages including: <ul style="list-style-type: none"> - High batch-to-batch consistency and reproducibility - Improved sensitivity and specificity - Long-term security of supply - Animal-free production For more information see here . Our RabMAb [®] technology is a patented hybridoma-based technology for making rabbit monoclonal antibodies. For details on our patents, please refer to RabMAb[®] patents .

Properties

Form	Liquid
Storage instructions	Shipped at 4°C. Store at +4°C short term (1-2 weeks). Upon delivery aliquot. Store at -20°C long term. Avoid freeze / thaw cycle.
Storage buffer	Preservative: 0.01% Sodium azide Constituents: 59.94% PBS, 40% Glycerol (glycerin, glycerine), 0.05% BSA
Purity	Protein A purified
Clonality	Monoclonal
Clone number	EPR23633-150

Applications

Our [Abpromise guarantee](#) covers the use of **ab256809** in the following tested applications.

The application notes include recommended starting dilutions; optimal dilutions/concentrations should be determined by the end user.

Application	Abreviews	Notes
Flow Cyt		1/500.

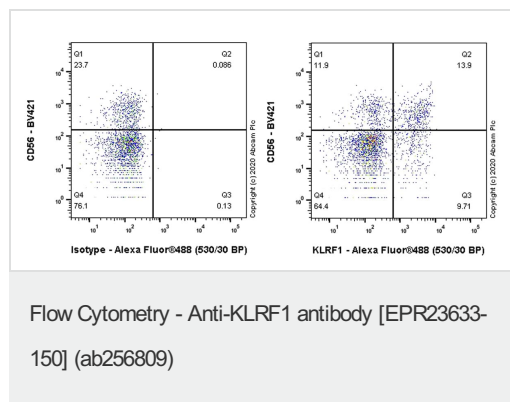
Application notes Is unsuitable for ICC,IHC-P,IP or WB.

Target

Relevance KLRF1 is involved in the natural killer mediated cytotoxicity of PHA-induced lymphoblasts.

Cellular localization Membrane; Single-pass type II membrane protein

Images



Flow cytometric analysis of human peripheral blood mononuclear cell (PBMC) cells labelling KLRF1 with ab256809 at 1/500 dilution (0.1ug) (Right) compared with a Rabbit monoclonal IgG ([ab172730](#)) isotype control (Left). Goat anti rabbit IgG (Alexa Fluor® 488, [ab150077](#)) at 1/2000 dilution was used as the secondary antibody.

Cells were stained with rabbit IgG or ab256809. Then stained with anti-CD56 conjugated to BV421.

Gated on viable cells.

Why choose a recombinant antibody?

- Research with confidence**
Consistent and reproducible results
- Long-term and scalable supply**
Recombinant technology
- Success from the first experiment**
Confirmed specificity
- Ethical standards compliant**
Animal-free production

Anti-KLRF1 antibody [EPR23633-150] (ab256809)

Please note: All products are "FOR RESEARCH USE ONLY. NOT FOR USE IN DIAGNOSTIC PROCEDURES"

Our Abpromise to you: Quality guaranteed and expert technical support

- Replacement or refund for products not performing as stated on the datasheet
- Valid for 12 months from date of delivery
- Response to your inquiry within 24 hours

- We provide support in Chinese, English, French, German, Japanese and Spanish
- Extensive multi-media technical resources to help you
- We investigate all quality concerns to ensure our products perform to the highest standards

If the product does not perform as described on this datasheet, we will offer a refund or replacement. For full details of the Abpromise, please visit <https://www.abcam.com/abpromise> or contact our technical team.

Terms and conditions

- Guarantee only valid for products bought direct from Abcam or one of our authorized distributors