


Product datasheet

Anti-KMT3A / HYPB / HIF-1 antibody ab69836

★ ★ ★ ★ ★ 1 Abreviews 9 References 3 Images

Overview

Product name	Anti-KMT3A / HYPB / HIF-1 antibody
Description	Rabbit polyclonal to KMT3A / HYPB / HIF-1
Host species	Rabbit
Tested applications	Suitable for: ICC/IF, WB, IHC-P
Species reactivity	Reacts with: Human Predicted to work with: Mouse, Rat, Horse, Cat, Dog 
Immunogen	A region within synthetic peptide: ELNEEIKQSH SFSLQTPCSK GSELRMINKN PEREKAGSPA PSNRLNDSPT, corresponding to N terminal amino acids 577-626 of Human KMT3A/ HYPB/ HIF-1 Run BLAST with ExPASy Run BLAST with NCBI
Positive control	HepG2 whole cell lysate (ab7900), Human placenta.
General notes	<p>Reproducibility is key to advancing scientific discovery and accelerating scientists' next breakthrough.</p> <p>Abcam is leading the way with our range of recombinant antibodies, knockout-validated antibodies and knockout cell lines, all of which support improved reproducibility.</p> <p>We are also planning to innovate the way in which we present recommended applications and species on our product datasheets, so that only applications & species that have been tested in our own labs, our suppliers or by selected trusted collaborators are covered by our Abpromise™ guarantee.</p> <p>In preparation for this, we have started to update the applications & species that this product is Abpromise guaranteed for.</p> <p>We are also updating the applications & species that this product has been “predicted to work with,” however this information is not covered by our Abpromise guarantee.</p> <p>Applications & species from publications and Abreviews that have not been tested in our own labs or in those of our suppliers are not covered by the Abpromise guarantee.</p> <p>Please check that this product meets your needs before purchasing. If you have any questions, special requirements or concerns, please send us an inquiry and/or contact our Support team ahead of purchase. Recommended alternatives for this product can be found below, as well as customer reviews and Q&As.</p>

Properties

Properties

Form	Liquid
Storage instructions	Shipped at 4°C. Upon delivery aliquot and store at -20°C. Avoid freeze / thaw cycles.
Storage buffer	pH: 7.2 Preservative: 0.09% Sodium azide Constituents: 2% Sucrose, PBS
Purity	Protein A purified
Clonality	Polyclonal
Isotype	IgG

Applications

Our [Abpromise guarantee](#) covers the use of **ab69836** in the following tested applications.

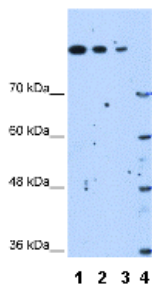
The application notes include recommended starting dilutions; optimal dilutions/concentrations should be determined by the end user.

Application	Abreviews	Notes
ICC/IF		Use a concentration of 5 µg/ml.
WB	★☆☆☆☆	Use a concentration of 1.25 µg/ml. Detects a band of approximately >70 kDa (predicted molecular weight: 288 kDa). Good results were obtained when blocked with 5% non-fat dry milk in 0.05% PBS-T.
IHC-P		Use a concentration of 4 - 8 µg/ml.

Target

Function	Histone methyltransferase that methylates 'Lys-36' of histone H3. H3 'Lys-36' methylation represents a specific tag for epigenetic transcriptional activation. Probably plays a role in chromatin structure modulation during elongation via its interaction with hyperphosphorylated POLR2A. Binds DNA at promoters. May also act as a transcription activator that binds to promoters. Binds to the promoters of adenovirus 12 E1A gene in case of infection, possibly leading to regulate its expression.
Tissue specificity	Ubiquitously expressed.
Sequence similarities	Belongs to the histone-lysine methyltransferase family. SET2 subfamily. Contains 1 AWS domain. Contains 1 post-SET domain. Contains 1 SET domain. Contains 1 WW domain.
Domain	The low charge region mediates the transcriptional activation activity.
Post-translational modifications	May be automethylated.
Cellular localization	Nucleus. Chromosome.

Images



Western blot - Anti-KMT3A / HYPB / HIF-1 antibody (ab69836)

All lanes : Anti-KMT3A / HYPB / HIF-1 antibody (ab69836) at 1.25 µg/ml

Lanes 1-3 : HepG2 cell lysate

Lane 4 : Molecular weight marker

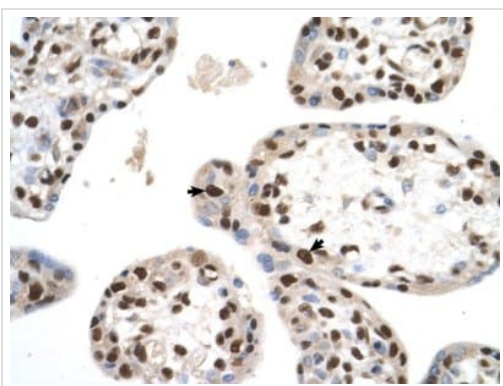
Secondary

All lanes : HRP conjugated anti-Rabbit IgG at 1/50000 dilution

Predicted band size: 288 kDa

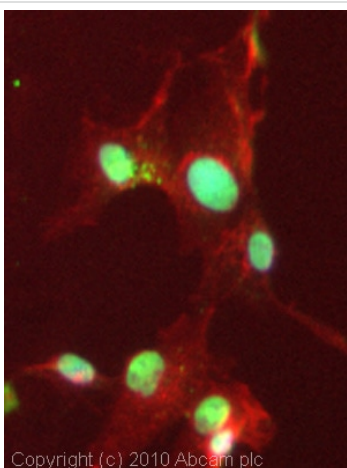
Observed band size: >70 kDa

[why is the actual band size different from the predicted?](#)



Immunohistochemistry (Formalin/PFA-fixed paraffin-embedded sections) - Anti-KMT3A / HYPB / HIF-1 antibody (ab69836)

Immunohistochemical analysis of paraffin-embedded human placenta using ab69836 at 4 µg/ml. Positively labelled trophoblast cells are indicated with arrows.



Immunocytochemistry/ Immunofluorescence - Anti-KMT3A / HYPB / HIF-1 antibody (ab69836)

ICC/IF image of ab69836 stained HepG2 cells. The cells were 4% formaldehyde fixed (10 min) and then incubated in 1%BSA / 10% normal goat serum / 0.3M glycine in 0.1% PBS-Tween for 1h to permeabilise the cells and block non-specific protein-protein interactions. The cells were then incubated with the antibody (ab69836, 5µg/ml) overnight at +4°C. The secondary antibody (green) was Alexa Fluor® 488 goat anti-rabbit IgG (H+L) used at a 1/1000 dilution for 1h. Alexa Fluor® 594 WGA was used to label plasma membranes (red) at a 1/200 dilution for 1h. DAPI was used to stain the cell nuclei (blue) at a concentration of 1.43µM.

Please note: All products are "FOR RESEARCH USE ONLY. NOT FOR USE IN DIAGNOSTIC PROCEDURES"

Our Abpromise to you: Quality guaranteed and expert technical support

- Replacement or refund for products not performing as stated on the datasheet
- Valid for 12 months from date of delivery
- Response to your inquiry within 24 hours

- We provide support in Chinese, English, French, German, Japanese and Spanish
- Extensive multi-media technical resources to help you
- We investigate all quality concerns to ensure our products perform to the highest standards

If the product does not perform as described on this datasheet, we will offer a refund or replacement. For full details of the Abpromise, please visit <https://www.abcam.com/abpromise> or contact our technical team.

Terms and conditions

- Guarantee only valid for products bought direct from Abcam or one of our authorized distributors