




Product datasheet

Anti-KMT3C / SMYD2 antibody ab234862

3 Images

Overview

Product name	Anti-KMT3C / SMYD2 antibody
Description	Rabbit polyclonal to KMT3C / SMYD2
Host species	Rabbit
Tested applications	Suitable for: IHC-P, ICC/IF
Species reactivity	Reacts with: Human Predicted to work with: Mouse, Rat, Chicken, Cow, Pig 
Immunogen	Recombinant fragment corresponding to Human KMT3C/ SMYD2 aa 115-272. Sequence: KQKIHPERTPSEKLLAVKEFESHLDKLDNEKKDLIQSDI AALHHFYSKHL GFPDNDSLVVLFAQVNCNGFTIEDEELSHLGS AIFPDV ALMNHSCCPNVI VTYKGT LAEVRAVQEIKPGEEVFTSYIDL LLYPTEDRNR LRDSYFFTCEC QECTTKDK Database link: Q9NRG4  Run BLAST with  Run BLAST with
Positive control	IHC-P: Human testis and small intestine tissue. ICC/IF: HeLa cells.

Properties

Form	Liquid
Storage instructions	Shipped at 4°C. Store at +4°C short term (1-2 weeks). Upon delivery aliquot. Store at -20°C long term. Avoid freeze / thaw cycle.
Storage buffer	pH: 7.40 Preservative: 0.03% Proclin Constituents: 50% Glycerol, PBS
Purity	Protein G purified
Purification notes	Purity >95%.
Clonality	Polyclonal
Isotype	IgG

Applications

Our [Abpromise guarantee](#) covers the use of **ab234862** in the following tested applications.

The application notes include recommended starting dilutions; optimal dilutions/concentrations should be determined by the end user.

Application	Abreviews	Notes
IHC-P		1/20 - 1/200.
ICC/IF		1/50 - 1/200.

Target

Function

Protein-lysine N-methyltransferase that methylates both histones and non-histone proteins. Specifically methylates histone H3 'Lys-4' (H3K4me) and dimethylates histone H3 'Lys-36' (H3K36me2). Has also methyltransferase activity toward non-histone proteins such as p53/TP53 and RB1. Monomethylates 'Lys-370' of p53/TP53, leading to decreased DNA-binding activity and subsequent transcriptional regulation activity of p53/TP53. Monomethylates 'Lys-860' of RB1/RB.

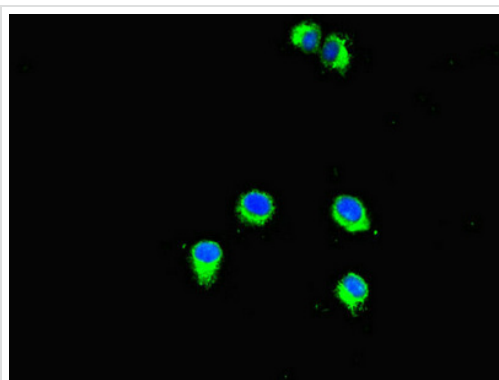
Sequence similarities

Contains 1 MYND-type zinc finger.
Contains 1 SET domain.

Cellular localization

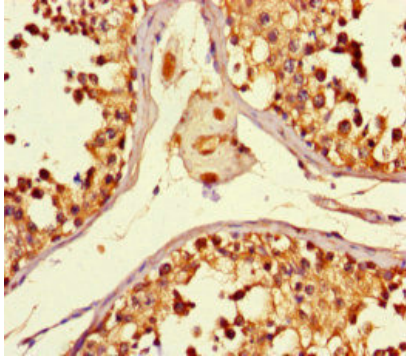
Cytoplasm > cytosol. Nucleus.

Images



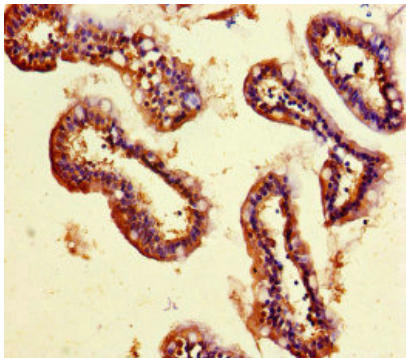
HeLa (human epithelial cell line from cervix adenocarcinoma) cells stained for KMT3C / SMYD2 (green) using ab234862 at 1/100 dilution in ICC/IF, followed by Alexa Fluor 488[®] conjugated Goat Anti-Rabbit IgG (H+L).

Immunocytochemistry/ Immunofluorescence - Anti-KMT3C / SMYD2 antibody (ab234862)



Immunohistochemistry (Formalin/PFA-fixed paraffin-embedded sections) - Anti-KMT3C / SMYD2 antibody (ab234862)

Paraffin-embedded human testis tissue stained for KMT3C / SMYD2 using ab234862 at 1/100 dilution in immunohistochemical analysis.



Immunohistochemistry (Formalin/PFA-fixed paraffin-embedded sections) - Anti-KMT3C / SMYD2 antibody (ab234862)

Paraffin-embedded human small intestine tissue stained for KMT3C / SMYD2 using ab234862 at 1/100 dilution in immunohistochemical analysis.

Please note: All products are "FOR RESEARCH USE ONLY. NOT FOR USE IN DIAGNOSTIC PROCEDURES"

Our Abpromise to you: Quality guaranteed and expert technical support

- Replacement or refund for products not performing as stated on the datasheet
- Valid for 12 months from date of delivery
- Response to your inquiry within 24 hours
- We provide support in Chinese, English, French, German, Japanese and Spanish
- Extensive multi-media technical resources to help you
- We investigate all quality concerns to ensure our products perform to the highest standards

If the product does not perform as described on this datasheet, we will offer a refund or replacement. For full details of the Abpromise, please visit <https://www.abcam.com/abpromise> or contact our technical team.

Terms and conditions

- Guarantee only valid for products bought direct from Abcam or one of our authorized distributors