


Product datasheet

Anti-KMT5A / SETD8 / Pr-SET7 antibody ab230683

1 Image

Overview

Product name	Anti-KMT5A / SETD8 / Pr-SET7 antibody
Description	Rabbit polyclonal to KMT5A / SETD8 / Pr-SET7
Host species	Rabbit
Tested applications	Suitable for: WB
Species reactivity	Reacts with: Human Predicted to work with: Mouse 
Immunogen	Recombinant full length protein (His-DDDDK-tag) corresponding to Human KMT5A/ SETD8/ Pr-SET7. (DDDDK-tagged N-terminus and His-tagged C terminus). Database link: Q9NQR1
Positive control	WB: HeLa nuclear extract.

Properties

Form	Liquid
Storage instructions	Shipped at 4°C. Store at +4°C short term (1-2 weeks). Upon delivery aliquot. Store at -20°C long term. Avoid freeze / thaw cycle.
Storage buffer	Preservative: 0.05% Sodium azide
Purity	Whole antiserum
Clonality	Polyclonal
Isotype	IgG

Applications

Our [Abpromise guarantee](#) covers the use of **ab230683** in the following tested applications.

The application notes include recommended starting dilutions; optimal dilutions/concentrations should be determined by the end user.

Application	Abreviews	Notes
WB		1/1000. Predicted molecular weight: 42 kDa.

Target

Function

Protein-lysine N-methyltransferase that monomethylates both histones and non-histone proteins. Specifically monomethylates 'Lys-20' of histone H4 (H4K20me1). H4K20me1 is enriched during mitosis and represents a specific tag for epigenetic transcriptional repression. Mainly functions in euchromatin regions, thereby playing a central role in the silencing of euchromatic genes. Required for cell proliferation, probably by contributing to the maintenance of proper higher order structure of DNA during mitosis. Involved in chromosome condensation and proper cytokinesis. Nucleosomes are preferred as substrate compared to free histones. Mediates monomethylation of p53/TP53 at 'Lys-382', leading to repress p53/TP53-target genes.

Sequence similarities

Belongs to the histone-lysine methyltransferase family. PR/SET subfamily. Contains 1 SET domain.

Developmental stage

Not detected during G1 phase. First detected during S through G2 phases, and peaks during mitosis (at protein level).

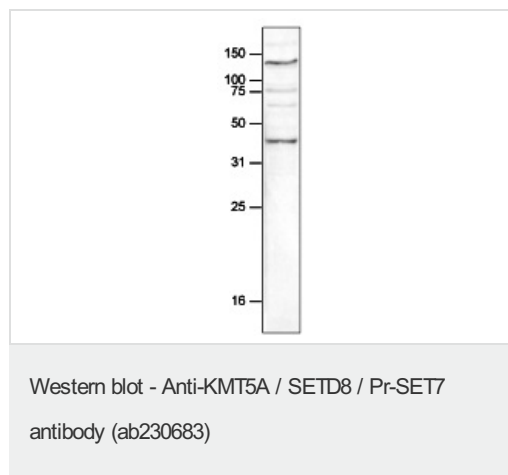
Domain

Although the SET domain contains the active site of enzymatic activity, both sequences upstream and downstream of the SET domain are required for methyltransferase activity.

Cellular localization

Nucleus. Chromosome. Specifically localizes to mitotic chromosomes. Associates with silent chromatin on euchromatic arms. Not associated with constitutive heterochromatin.

Images



Anti-KMT5A / SETD8 / Pr-SET7 antibody (ab230683) at 1/1000 dilution + HeLa (human epithelial cell line from cervix adenocarcinoma) nuclear extract at 20 µg

Predicted band size: 42 kDa

Please note: All products are "FOR RESEARCH USE ONLY. NOT FOR USE IN DIAGNOSTIC PROCEDURES"

Our Abpromise to you: Quality guaranteed and expert technical support

- Replacement or refund for products not performing as stated on the datasheet
- Valid for 12 months from date of delivery
- Response to your inquiry within 24 hours
- We provide support in Chinese, English, French, German, Japanese and Spanish
- Extensive multi-media technical resources to help you
- We investigate all quality concerns to ensure our products perform to the highest standards

If the product does not perform as described on this datasheet, we will offer a refund or replacement. For full details of the Abpromise,

please visit <https://www.abcam.com/abpromise> or contact our technical team.

Terms and conditions

- Guarantee only valid for products bought direct from Abcam or one of our authorized distributors