




## Product datasheet

# Anti-KPNA6 antibody ab110016

3 Images

### Overview

---

<b>Product name</b>	Anti-KPNA6 antibody
<b>Description</b>	Goat polyclonal to KPNA6
<b>Host species</b>	Goat
<b>Tested applications</b>	<b>Suitable for:</b> WB, IHC-P, ELISA
<b>Species reactivity</b>	<p><b>Reacts with:</b> Human</p> <p><b>Predicted to work with:</b> Mouse, Rat, Cow, Dog, Pig </p>
<b>Immunogen</b>	<p>Synthetic peptide:</p> <p>C-STTGESVITREMVE</p> <p>, corresponding to internal sequence amino acids 74-87 of Human KPNA6</p> <p style="text-align: right;">  <a href="#">Run BLAST with</a>                 <a href="#">Run BLAST with</a> </p>
<b>Positive control</b>	Human adrenal tissue, Human prostate tissue, Human muscle lysate.
<b>General notes</b>	<p>Reproducibility is key to advancing scientific discovery and accelerating scientists' next breakthrough.</p> <p>Abcam is leading the way with our range of recombinant antibodies, knockout-validated antibodies and knockout cell lines, all of which support improved reproducibility.</p> <p>We are also planning to innovate the way in which we present recommended applications and species on our product datasheets, so that only applications &amp; species that have been tested in our own labs, our suppliers or by selected trusted collaborators are covered by our Abpromise™ guarantee.</p> <p>In preparation for this, we have started to update the applications &amp; species that this product is Abpromise guaranteed for.</p> <p>We are also updating the applications &amp; species that this product has been “predicted to work with,” however this information is not covered by our Abpromise guarantee.</p> <p>Applications &amp; species from publications and Abreviews that have not been tested in our own labs or in those of our suppliers are not covered by the Abpromise guarantee.</p> <p>Please check that this product meets your needs before purchasing. If you have any questions, special requirements or concerns, please send us an inquiry and/or contact our Support team ahead of purchase. Recommended alternatives for this product can be found below, as well as customer reviews and Q&amp;As.</p>

## Properties

---

<b>Form</b>	Liquid
<b>Storage instructions</b>	Shipped at 4°C. Upon delivery aliquot and store at -20°C. Avoid freeze / thaw cycles.
<b>Storage buffer</b>	pH: 7.30 Preservative: 0.02% Sodium azide Constituents: Tris buffered saline, 0.5% BSA
<b>Purity</b>	Immunogen affinity purified
<b>Clonality</b>	Polyclonal
<b>Isotype</b>	IgG

## Applications

---

Our [Abpromise guarantee](#) covers the use of **ab110016** in the following tested applications.

The application notes include recommended starting dilutions; optimal dilutions/concentrations should be determined by the end user.

Application	Abreviews	Notes
WB		Use a concentration of 0.1 - 0.3 µg/ml. Predicted molecular weight: 60 kDa.
IHC-P		Use a concentration of 3.75 µg/ml.
ELISA		1/128000.

## Target

---

**Function** Functions in nuclear protein import as an adapter protein for nuclear receptor KPNB1. Binds specifically and directly to substrates containing either a simple or bipartite NLS motif. Docking of the importin/substrate complex to the nuclear pore complex (NPC) is mediated by KPNB1 through binding to nucleoporin FxFG repeats and the complex is subsequently translocated through the pore by an energy requiring, Ran-dependent mechanism. At the nucleoplasmic side of the NPC, Ran binds to importin-beta and the three components separate and importin-alpha and -beta are re-exported from the nucleus to the cytoplasm where GTP hydrolysis releases Ran from importin. The directionality of nuclear import is thought to be conferred by an asymmetric distribution of the GTP- and GDP-bound forms of Ran between the cytoplasm and nucleus.

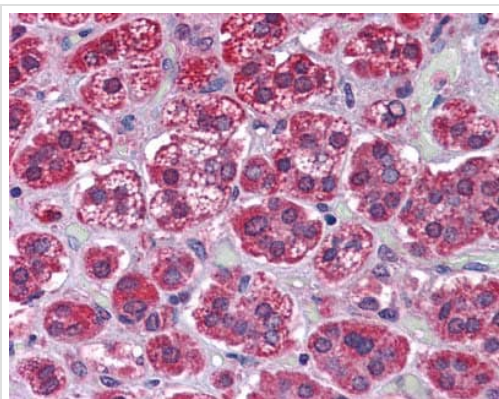
**Tissue specificity** Widely expressed.

**Sequence similarities** Belongs to the importin alpha family.  
Contains 10 ARM repeats.  
Contains 1 IBB domain.

**Form** Cellular location: cytoplasm; nucleus.

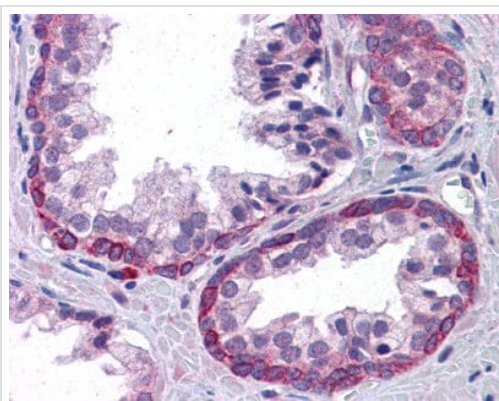
## Images

---



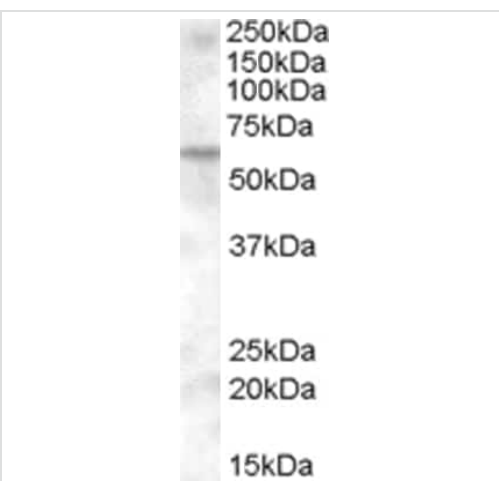
Immunohistochemistry (Formalin/PFA-fixed paraffin-embedded sections) - Anti-KPNA6 antibody (ab110016)

ab110016, at 3.75  $\mu\text{g/ml}$ , staining KPNA6 in Human adrenal tissue by immunohistochemistry.



Immunohistochemistry (Formalin/PFA-fixed paraffin-embedded sections) - Anti-KPNA6 antibody (ab110016)

ab110016, at 3.75  $\mu\text{g/ml}$ , staining KPNA6 in Human prostate tissue by immunohistochemistry.



Western blot - Anti-KPNA6 antibody (ab110016)

Anti-KPNA6 antibody (ab110016) at 0.1  $\mu\text{g/ml}$  + Human muscle lysate (in RIPA buffer) at 35  $\mu\text{g}$

**Predicted band size:** 60 kDa

Primary incubation was 1 hour. Detected by chemiluminescence.

**Please note:** All products are "FOR RESEARCH USE ONLY. NOT FOR USE IN DIAGNOSTIC PROCEDURES"

### **Our Abpromise to you: Quality guaranteed and expert technical support**

---

- Replacement or refund for products not performing as stated on the datasheet
- Valid for 12 months from date of delivery
- Response to your inquiry within 24 hours
  
- We provide support in Chinese, English, French, German, Japanese and Spanish
- Extensive multi-media technical resources to help you
- We investigate all quality concerns to ensure our products perform to the highest standards

If the product does not perform as described on this datasheet, we will offer a refund or replacement. For full details of the Abpromise, please visit <https://www.abcam.com/abpromise> or contact our technical team.

### **Terms and conditions**

---

- Guarantee only valid for products bought direct from Abcam or one of our authorized distributors