

Product datasheet

Anti-KSR2 antibody ab170442

3 Images

Overview

Product name	Anti-KSR2 antibody
Description	Rabbit polyclonal to KSR2
Host species	Rabbit
Tested applications	Suitable for: Flow Cyt, IHC-P, WB
Species reactivity	Reacts with: Human
Immunogen	Synthetic peptide within Human KSR2 (C terminal) conjugated to Keyhole Limpet Haemocyanin (KLH). The exact sequence is proprietary. Database link: Q6VAB6
Positive control	293, K562, HepG2 or Hela lysate, Human brain tissue, MCF-7 cells

Properties

Form	Liquid
Storage instructions	Shipped at 4°C. Store at +4°C short term (1-2 weeks). Upon delivery aliquot. Store at -20°C long term. Avoid freeze / thaw cycle.
Storage buffer	Preservative: 0.09% Sodium azide Constituent: 99% PBS
Purity	Protein A purified
Clonality	Polyclonal
Isotype	IgG

Applications

Our [Abpromise guarantee](#) covers the use of **ab170442** in the following tested applications.

The application notes include recommended starting dilutions; optimal dilutions/concentrations should be determined by the end user.

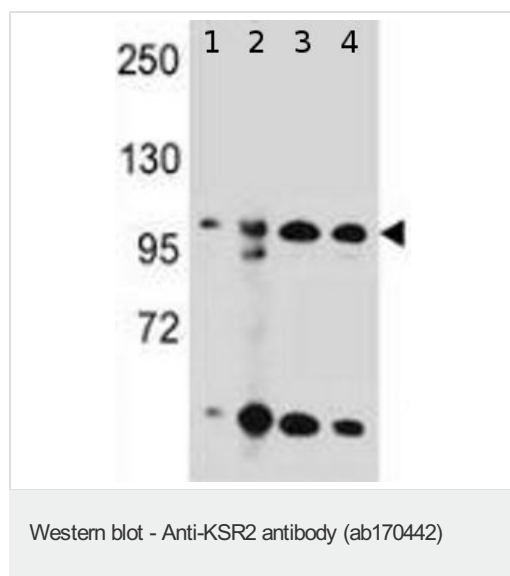
Application	Abreviews	Notes
Flow Cyt		1/10 - 1/50. ab171870 - Rabbit polyclonal IgG, is suitable for use as an isotype control with this antibody.

Application	Abreviews	Notes
IHC-P		1/50 - 1/100. Perform heat mediated antigen retrieval with citrate buffer pH 6 before commencing with IHC staining protocol.
WB		1/100 - 1/500. Detects a band of approximately 108 kDa.

Target

Function	Location-regulated scaffold connecting MEK to RAF. Blocks MAP3K8 kinase activity and MAP3K8-mediated signaling. Acts as a negative regulator of MAP3K3-mediated activation of ERK, JNK and NF-kappa-B pathways, inhibiting MAP3K3-mediated interleukin-8 production.
Tissue specificity	Mainly expressed in brain and kidney.
Sequence similarities	Belongs to the protein kinase superfamily. TKL Ser/Thr protein kinase family. Contains 1 phorbol-ester/DAG-type zinc finger. Contains 1 protein kinase domain.
Domain	The protein kinase domain is predicted to be catalytically inactive.
Post-translational modifications	Phosphorylated on Ser-474 by MARK3.
Cellular localization	Cytoplasm. Membrane.

Images



All lanes : Anti-KSR2 antibody (ab170442) at 1/100 dilution

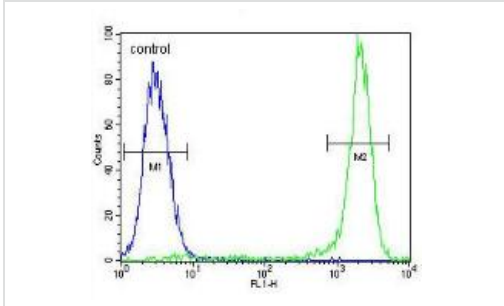
Lane 1 : 293 cell line lysate

Lane 2 : K562 cell line lysate

Lane 3 : HepG2 cell line lysate

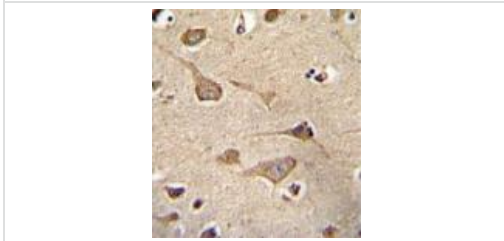
Lane 4 : HeLa cell line lysate

Lysates/proteins at 35 µg per lane.



Flow Cytometry - Anti-KSR2 antibody (ab170442)

Flow cytometry analysis of MCF-7 cells (green) compared to a negative control cells (blue) using ab170442 at a 1/10 dilution. FITC-conjugated goat-anti-rabbit secondary antibodies were used for the analysis.



Immunohistochemistry (Formalin/PFA-fixed paraffin-embedded sections) - Anti-KSR2 antibody (ab170442)

Immunohistochemical analysis of paraffin embedded Human brain tissue labeling KSR2 with ab170442 at a 1/50 dilution.

Please note: All products are "FOR RESEARCH USE ONLY AND ARE NOT INTENDED FOR DIAGNOSTIC OR THERAPEUTIC USE"

Our Abpromise to you: Quality guaranteed and expert technical support

- Replacement or refund for products not performing as stated on the datasheet
- Valid for 12 months from date of delivery
- Response to your inquiry within 24 hours
- We provide support in Chinese, English, French, German, Japanese and Spanish
- Extensive multi-media technical resources to help you
- We investigate all quality concerns to ensure our products perform to the highest standards

If the product does not perform as described on this datasheet, we will offer a refund or replacement. For full details of the Abpromise, please visit <https://www.abcam.com/abpromise> or contact our technical team.

Terms and conditions

- Guarantee only valid for products bought direct from Abcam or one of our authorized distributors