

## Product datasheet

# L-Amino Acid Assay Kit ab65347

[7 References](#) [3 Images](#)

### Overview

---

<b>Product name</b>	L-Amino Acid Assay Kit
<b>Detection method</b>	Colorimetric/Fluorometric
<b>Sample type</b>	Cell culture supernatant, Urine, Serum, Plasma, Other biological fluids, Tissue Extracts
<b>Assay type</b>	Quantitative
<b>Sensitivity</b>	<= 40 µM
<b>Assay time</b>	0h 30m
<b>Product overview</b>	L-Amino Acid Assay Kit ab65347 is used measure the level of L-amino acids in biological samples. There is no requirement for sample pretreatment or purification.

The L-amino acid(s) level can be quantified using fluorometric (at Ex/Em = 535/587 nm) or colorimetric (at  $\lambda = 570$  nm) methods in 96-well plates.

Amino acid assay protocol summary:

- add reaction mix to sample and standard wells
- incubate for 30 min
- analyze with microplate reader

**Notes** L-Amino acids are the most essential elements in biology. Accurately quantitating L-amino acids in body fluids or purified samples may provide valuable information for diagnostic or basic research studies.

Abcam has not and does not intend to apply for the REACH Authorisation of customers' uses of products that contain European Authorisation list (Annex XIV) substances.

It is the responsibility of our customers to check the necessity of application of REACH Authorisation, and any other relevant authorisations, for their intended uses.

**Platform** Microplate reader

### Properties

---

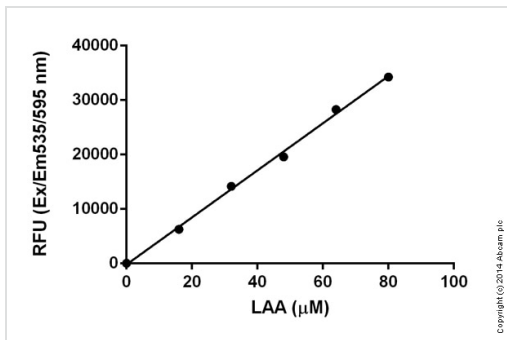
**Storage instructions** Store at -20°C. Please refer to protocols.

Components	Identifier	100 tests
L-Amino Acid Assay Buffer	WM	1 x 25ml
L-Amino Acid Enzyme Mix	Green	1 vial
L-amino Acid Probe	Red	1 x 0.2ml
L-Amino Acid Standard (4 nmol/μl)	Yellow	1 x 300μl

**Relevance**

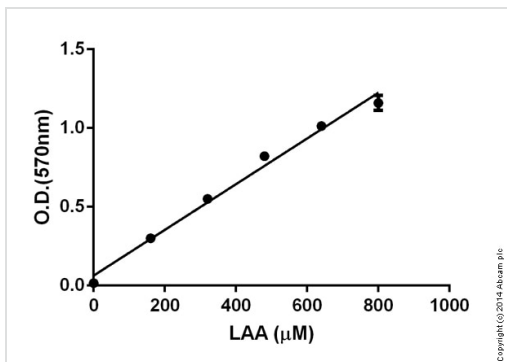
Amino acids perform various important functions for the body and serve as the materials for the body's cells, hormones, and enzymes. Of the standard amino acids, all by glycine can exist in either of the two optical isomers, called D and L enantiomers, which are mirror images of each other. The L-amino acids represent the vast majority of amino acids found in proteins during translation in the ribosome, and are therefore the most essential element in biology and metabolic functions.

**Images**



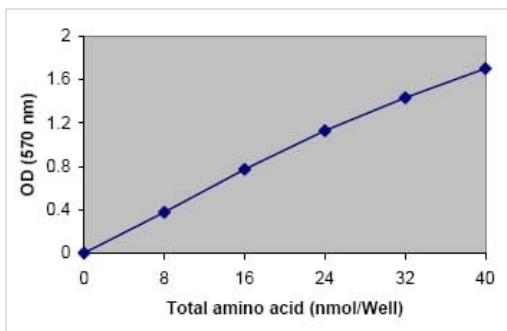
Standard curve (fluorimetric): mean of duplicates (+/-) with background subtracted

Functional studies - L-Amino Acid Assay Kit (ab65347)



Standard curve (colorimetric): mean of duplicates (+/-SD) with background readings subtracted

Functional studies - L-Amino Acid Assay Kit (ab65347)



L-Amino Acid Standard Curve.

Functional Studies - L-Amino Acid Assay Kit  
(ab65347)

**Please note:** All products are "FOR RESEARCH USE ONLY. NOT FOR USE IN DIAGNOSTIC PROCEDURES"

### Our Abpromise to you: Quality guaranteed and expert technical support

---

- Replacement or refund for products not performing as stated on the datasheet
- Valid for 12 months from date of delivery
- Response to your inquiry within 24 hours
- We provide support in Chinese, English, French, German, Japanese and Spanish
- Extensive multi-media technical resources to help you
- We investigate all quality concerns to ensure our products perform to the highest standards

If the product does not perform as described on this datasheet, we will offer a refund or replacement. For full details of the Abpromise, please visit <https://www.abcam.com/abpromise> or contact our technical team.

### Terms and conditions

---

- Guarantee only valid for products bought direct from Abcam or one of our authorized distributors