

Product datasheet

Anti-Lambda Light chain antibody [LcN-2] ab187370

[2 Images](#)

Overview

Product name	Anti-Lambda Light chain antibody [LcN-2]
Description	Mouse monoclonal [LcN-2] to Lambda Light chain
Host species	Mouse
Specificity	ab187370 is specific to lambda light chain of immunoglobulin and shows no cross-reaction with kappa light chain or any of the five heavy chains.
Tested applications	Suitable for: IHC-P, WB
Species reactivity	Reacts with: Human
Immunogen	Full length protein corresponding to Human Lambda Light chain. (Purified Human IgG). Database link: P01701
Positive control	293T, Raji or hPBL cell lysates; Human intestine lysate; Human tonsil or spleen tissue.
General notes	<p>Reproducibility is key to advancing scientific discovery and accelerating scientists' next breakthrough.</p> <p>Abcam is leading the way with our range of recombinant antibodies, knockout-validated antibodies and knockout cell lines, all of which support improved reproducibility.</p> <p>We are also planning to innovate the way in which we present recommended applications and species on our product datasheets, so that only applications & species that have been tested in our own labs, our suppliers or by selected trusted collaborators are covered by our Abpromise™ guarantee.</p> <p>In preparation for this, we have started to update the applications & species that this product is Abpromise guaranteed for.</p> <p>We are also updating the applications & species that this product has been “predicted to work with,” however this information is not covered by our Abpromise guarantee.</p> <p>Applications & species from publications and Abreviews that have not been tested in our own labs or in those of our suppliers are not covered by the Abpromise guarantee.</p> <p>Please check that this product meets your needs before purchasing. If you have any questions, special requirements or concerns, please send us an inquiry and/or contact our Support team ahead of purchase. Recommended alternatives for this product can be found below, as well as customer reviews and Q&As.</p>

Properties

Form	Liquid
Storage instructions	Shipped at 4°C. Store at +4°C short term (1-2 weeks). Upon delivery aliquot. Store at -20°C long term. Avoid freeze / thaw cycle.
Storage buffer	Preservative: 0.05% Sodium azide Constituents: 99% PBS, 0.05% BSA
Purity	Protein A purified
Purification notes	ab187370 was purified from Bioreactor Concentrate by Protein A/G.
Clonality	Monoclonal
Clone number	LcN-2
Isotype	IgG2a
Light chain type	kappa

Applications

Our [Abpromise guarantee](#) covers the use of **ab187370** in the following tested applications.

The application notes include recommended starting dilutions; optimal dilutions/concentrations should be determined by the end user.

Application	Abreviews	Notes
IHC-P		Use a concentration of 0.5 - 1 µg/ml. Perform heat mediated antigen retrieval with citrate buffer pH 6 before commencing with IHC staining protocol.
WB		Use a concentration of 0.5 - 1 µg/ml. Predicted molecular weight: 23 kDa.

Target

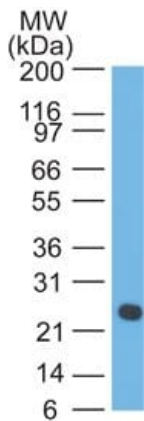
Relevance

All five immunoglobulin classes share the same basic four polypeptide chain structure of two heavy-chains and two light chains. There are five heavy chain types, and two light-chain types (Kappa and Lambda) both having a molecular weight of 22.5kDa. Any heavy-chain type can associate with either light-chain type, but on any immunoglobulin molecule both light-chains are of the same type. Kappa and Lambda consist of a variable region and a constant region and can easily be differentiated by the antigenic properties of the constant region. The ratio of Kappa to Lambda is 70:30, the vast majority of which is bound to heavy-chain in immunoglobulin. In normal individuals low levels of free light-chain are present in serum (kappa, 1.6-15.2 mg/L; Lambda, 0.4-4.2mg/L), with the occurrence of multiple myeloma or other B-cell malignancies these levels can be greatly elevated and can be found at high levels in the urine (Bence-Jones proteins).

Cellular localization

Cytoplasmic

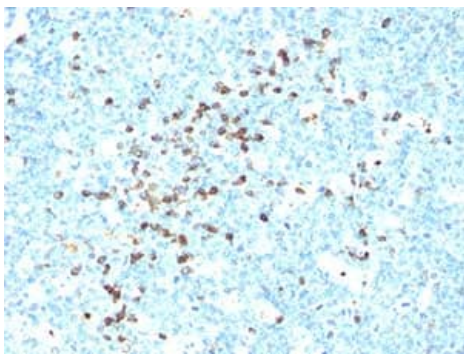
Images



Western blot - Anti-Lambda Light chain antibody [LcN-2] (ab187370)

Anti-Lambda Light chain antibody [LcN-2] (ab187370) at 1 µg/ml + Human intestine lysate

Predicted band size: 23 kDa



Immunohistochemistry (Formalin/PFA-fixed paraffin-embedded sections) - Anti-Lambda Light chain antibody [LcN-2] (ab187370)

Immunohistochemical analysis of formalin-fixed, paraffin embedded Human tonsil tissue labeling Lambda Light chain with ab187370 at 1 µg/ml.

Please note: All products are "FOR RESEARCH USE ONLY. NOT FOR USE IN DIAGNOSTIC PROCEDURES"

Our Abpromise to you: Quality guaranteed and expert technical support

- Replacement or refund for products not performing as stated on the datasheet
- Valid for 12 months from date of delivery
- Response to your inquiry within 24 hours
- We provide support in Chinese, English, French, German, Japanese and Spanish
- Extensive multi-media technical resources to help you
- We investigate all quality concerns to ensure our products perform to the highest standards

If the product does not perform as described on this datasheet, we will offer a refund or replacement. For full details of the Abpromise,

please visit <https://www.abcam.com/abpromise> or contact our technical team.

Terms and conditions

- Guarantee only valid for products bought direct from Abcam or one of our authorized distributors