




Product datasheet

Anti-LAMC2 antibody [CL2980] ab210959

1 References 8 Images

Overview

Product name	Anti-LAMC2 antibody [CL2980]
Description	Mouse monoclonal [CL2980] to LAMC2
Host species	Mouse
Tested applications	Suitable for: IHC-P, WB
Species reactivity	Reacts with: Human Predicted to work with: Mouse, Horse 
Immunogen	Recombinant fragment corresponding to Human LAMC2 aa 1090-1175 (C terminal). Sequence: NAGVTIQDTLNTLDGLLHLMQPLSVDEEGLVLEQKL SRAKTQINSQLR PMMSELEERARQQRGHLHLETSIDGLADVKNLEN Database link: Q13753  Run BLAST with  Run BLAST with
Epitope	Binds to an epitope located within the peptide sequence IQDTLNTLDGLLHLM as determined by overlapping synthetic peptides.
Positive control	Purified Human recombinant protein LAMC2; A431 lysate; Human skin, stomach, prostate, cervix and colon tissue.

Properties

Form	Liquid
Storage instructions	Shipped at 4°C. Store at +4°C short term (1-2 weeks). Upon delivery aliquot. Store at -20°C long term. Avoid freeze / thaw cycle.
Storage buffer	pH: 7.2 Preservative: 0.02% Sodium azide Constituents: 40% Glycerol, 59% PBS
Purity	Protein A purified
Clonality	Monoclonal
Clone number	CL2980
Isotype	IgG1

Applications

Our [Abpromise guarantee](#) covers the use of **ab210959** in the following tested applications.

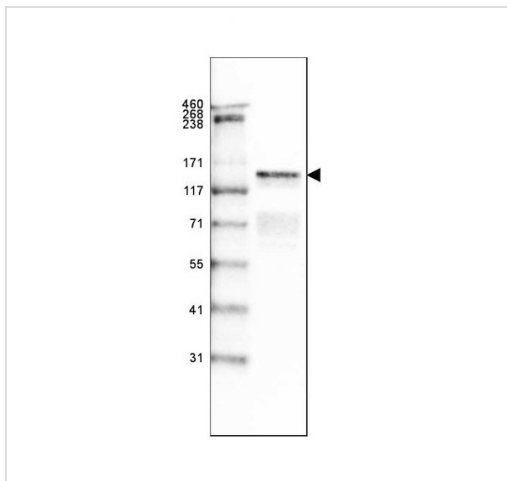
The application notes include recommended starting dilutions; optimal dilutions/concentrations should be determined by the end user.

Application	Abreviews	Notes
IHC-P		1/500 - 1/1000. Perform heat mediated antigen retrieval with citrate buffer pH 6 before commencing with IHC staining protocol.
WB		1/500 - 1/1000. Predicted molecular weight: 131 kDa.

Target

Function	Binding to cells via a high affinity receptor, laminin is thought to mediate the attachment, migration and organization of cells into tissues during embryonic development by interacting with other extracellular matrix components. Ladsin exerts cell-scattering activity toward a wide variety of cells, including epithelial, endothelial, and fibroblastic cells.
Tissue specificity	The large variant is expressed only in specific epithelial cells of embryonic and neonatal tissues. In 17-week old embryo the small variant is found in cerebral cortex, lung, and distal tubes of kidney, but not in epithelia except for distal tubuli.
Involvement in disease	Defects in LAMC2 are a cause of epidermolysis bullosa junctional Herlitz type (H-JEB) [MIM:226700]; also known as junctional epidermolysis bullosa Herlitz-Pearson type. JEB defines a group of blistering skin diseases characterized by tissue separation which occurs within the dermo-epidermal basement membrane. H-JEB is a severe, infantile and lethal form. Death occurs usually within the first six months of life. Occasionally, children survive to teens. H-JEB is marked by bullous lesions at birth and extensive denudation of skin and mucous membranes that may be hemorrhagic.
Sequence similarities	Contains 8 laminin EGF-like domains. Contains 1 laminin IV type A domain.
Domain	The alpha-helical domains I and II are thought to interact with other laminin chains to form a coiled coil structure. Domain IV is globular.
Cellular localization	Secreted > extracellular space > extracellular matrix > basement membrane. Major component.

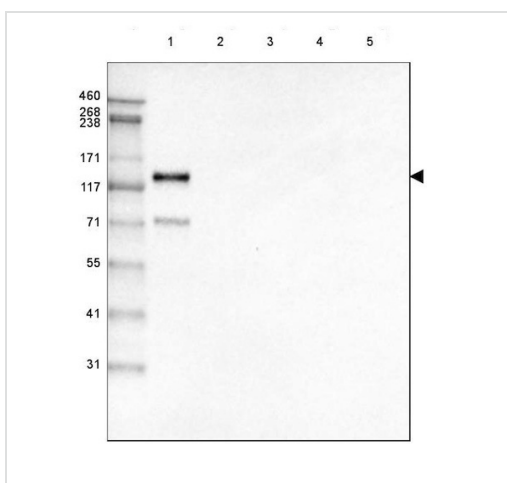
Images



Western blot - Anti-LAMC2 antibody [CL2980]
(ab210959)

Anti-LAMC2 antibody [CL2980] (ab210959) at 1/500 dilution +
A431 lysate

Predicted band size: 131 kDa



Western blot - Anti-LAMC2 antibody [CL2980]
(ab210959)

All lanes : Anti-LAMC2 antibody [CL2980] (ab210959) at 1/500
dilution

Lane 1 : Purified Human recombinant protein LAMC2

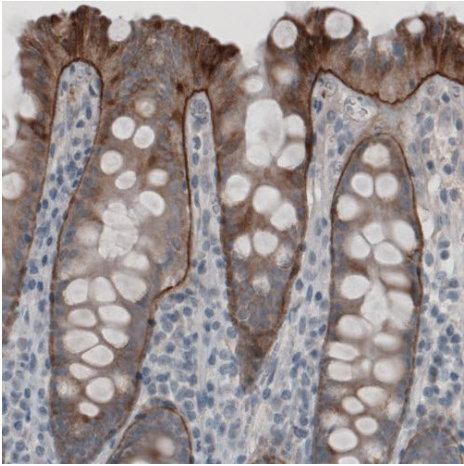
Lane 2 : Purified Human recombinant protein Laminin-421

Lane 3 : Purified Human recombinant protein Laminin-511

Lane 4 : Purified Human recombinant protein Laminin-121

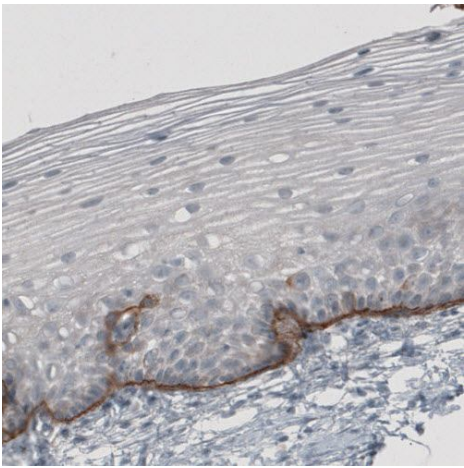
Lane 5 : Purified Human recombinant protein Laminin-221

Predicted band size: 131 kDa



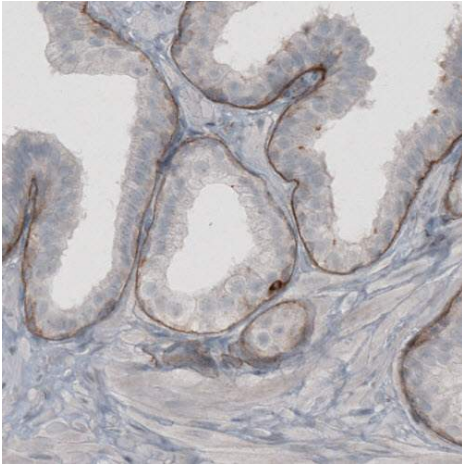
Immunohistochemical analysis of formalin-fixed paraffin-embedded Human colon tissue labeling LAMC2 with ab210959 at 1/500 dilution.

Immunohistochemistry (Formalin/PFA-fixed paraffin-embedded sections) - Anti-LAMC2 antibody [CL2980] (ab210959)



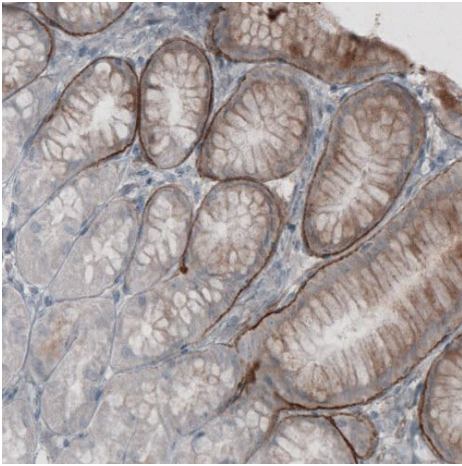
Immunohistochemical analysis of formalin-fixed paraffin-embedded Human cervix tissue labeling LAMC2 with ab210959 at 1/500 dilution.

Immunohistochemistry (Formalin/PFA-fixed paraffin-embedded sections) - Anti-LAMC2 antibody [CL2980] (ab210959)



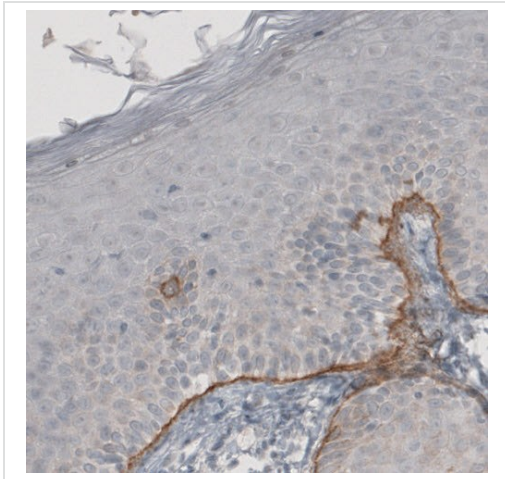
Immunohistochemical analysis of formalin-fixed paraffin-embedded Human prostate tissue labeling LAMC2 with ab210959 at 1/500 dilution.

Immunohistochemistry (Formalin/PFA-fixed paraffin-embedded sections) - Anti-LAMC2 antibody [CL2980] (ab210959)



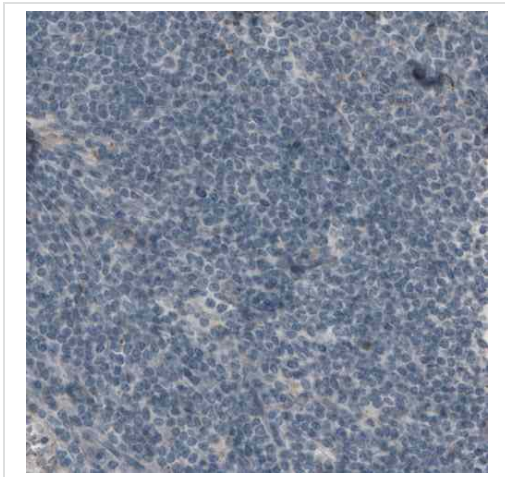
Immunohistochemical analysis of formalin-fixed paraffin-embedded Human stomach tissue labeling LAMC2 with ab210959 at 1/500 dilution.

Immunohistochemistry (Formalin/PFA-fixed paraffin-embedded sections) - Anti-LAMC2 antibody [CL2980] (ab210959)



Immunohistochemical analysis of formalin-fixed paraffin-embedded Human skin tissue labeling LAMC2 with ab210959 at 1/500 dilution.

Immunohistochemistry (Formalin/PFA-fixed paraffin-embedded sections) - Anti-LAMC2 antibody [CL2980] (ab210959)



Immunohistochemical analysis of formalin-fixed paraffin-embedded Human lymph node tissue labeling LAMC2 with ab210959 at 1/500 dilution (negative control).

Immunohistochemistry (Formalin/PFA-fixed paraffin-embedded sections) - Anti-LAMC2 antibody [CL2980] (ab210959)

Please note: All products are "FOR RESEARCH USE ONLY. NOT FOR USE IN DIAGNOSTIC PROCEDURES"

Our Abpromise to you: Quality guaranteed and expert technical support

- Replacement or refund for products not performing as stated on the datasheet
- Valid for 12 months from date of delivery
- Response to your inquiry within 24 hours

- We provide support in Chinese, English, French, German, Japanese and Spanish
- Extensive multi-media technical resources to help you
- We investigate all quality concerns to ensure our products perform to the highest standards

If the product does not perform as described on this datasheet, we will offer a refund or replacement. For full details of the Abpromise, please visit <https://www.abcam.com/abpromise> or contact our technical team.

Terms and conditions

- Guarantee only valid for products bought direct from Abcam or one of our authorized distributors