

Product datasheet

Anti-Lamin B2 antibody ab97513

[2 References](#) [2 Images](#)

Overview

Product name	Anti-Lamin B2 antibody
Description	Rabbit polyclonal to Lamin B2
Host species	Rabbit
Tested applications	Suitable for: WB, IHC-P
Species reactivity	Reacts with: Human
Immunogen	Recombinant fragment, corresponding to a region within amino acids 221-470 of Human Lamin B2 (NP_116126)

General notes

Reproducibility is key to advancing scientific discovery and accelerating scientists' next breakthrough.

Abcam is leading the way with our range of recombinant antibodies, knockout-validated antibodies and knockout cell lines, all of which support improved reproducibility.

We are also planning to innovate the way in which we present recommended applications and species on our product datasheets, so that only applications & species that have been tested in our own labs, our suppliers or by selected trusted collaborators are covered by our Abpromise™ guarantee.

In preparation for this, we have started to update the applications & species that this product is Abpromise guaranteed for.

We are also updating the applications & species that this product has been "predicted to work with," however this information is not covered by our Abpromise guarantee.

Applications & species from publications and Abreviews that have not been tested in our own labs or in those of our suppliers are not covered by the Abpromise guarantee.

Please check that this product meets your needs before purchasing. If you have any questions, special requirements or concerns, please send us an inquiry and/or contact our Support team ahead of purchase. Recommended alternatives for this product can be found below, as well as customer reviews and Q&As.

Properties

Form	Liquid
Storage instructions	Shipped at 4°C. Upon delivery aliquot. Store at -20°C or -80°C. Avoid freeze / thaw cycle.

Storage buffer	pH: 7.00 Preservative: 0.025% Proclin 300 Constituents: 79% PBS, 20% Glycerol (glycerin, glycerine)
Purity	Immunogen affinity purified
Clonality	Polyclonal
Isotype	IgG

Applications

Our [Abpromise guarantee](#) covers the use of **ab97513** in the following tested applications.

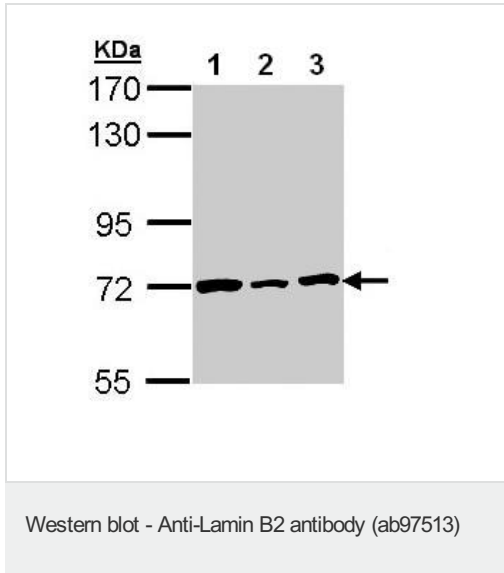
The application notes include recommended starting dilutions; optimal dilutions/concentrations should be determined by the end user.

Application	Abreviews	Notes
WB		1/500 - 1/3000. Predicted molecular weight: 68 kDa.
IHC-P		1/100 - 1/250.

Target

Function	Lamins are components of the nuclear lamina, a fibrous layer on the nucleoplasmic side of the inner nuclear membrane, which is thought to provide a framework for the nuclear envelope and may also interact with chromatin.
Involvement in disease	Defects in LMNB2 are a cause of partial acquired lipodystrophy (APLD) [MIM:608709]. A rare childhood disease characterized by loss of subcutaneous fat from the face and trunk. Fat deposition on the pelvic girdle and lower limbs is normal or excessive. Most frequently, onset between 5 and 15 years of age. Most affected subjects are females and some show no other abnormality, but many develop glomerulonephritis, diabetes mellitus, hyperlipidemia, and complement deficiency. Mental retardation in some cases. APLD is a sporadic disorder of unknown etiology.
Sequence similarities	Belongs to the intermediate filament family.
Post-translational modifications	B-type lamins undergo a series of modifications, such as farnesylation and phosphorylation. Increased phosphorylation of the lamins occurs before envelope disintegration and probably plays a role in regulating lamin associations.
Cellular localization	Nucleus inner membrane.

Images



All lanes : Anti-Lamin B2 antibody (ab97513) at 1/1000 dilution

Lane 1 : H1299 whole cell lysate

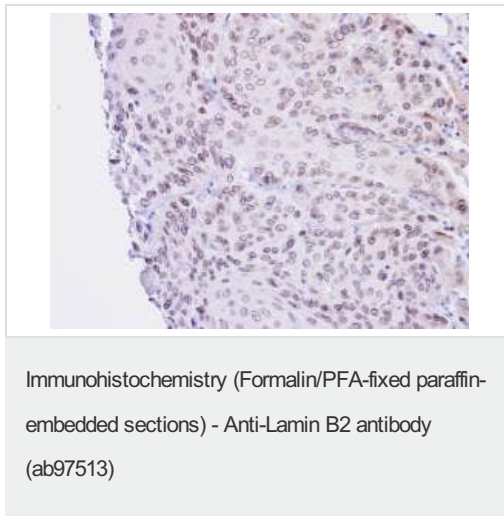
Lane 2 : HeLa whole cell lysate

Lane 3 : HepG2 whole cell lysate

Lysates/proteins at 30 µg per lane.

Predicted band size: 68 kDa

7.5% SDS PAGE



Immunohistochemical analysis of Lamin B2 in paraffin embedded Cal27 Xenograft, using ab97513 at a 1/100 dilution.

Please note: All products are "FOR RESEARCH USE ONLY. NOT FOR USE IN DIAGNOSTIC PROCEDURES"

Our Abpromise to you: Quality guaranteed and expert technical support

- Replacement or refund for products not performing as stated on the datasheet
- Valid for 12 months from date of delivery
- Response to your inquiry within 24 hours
- We provide support in Chinese, English, French, German, Japanese and Spanish
- Extensive multi-media technical resources to help you
- We investigate all quality concerns to ensure our products perform to the highest standards

If the product does not perform as described on this datasheet, we will offer a refund or replacement. For full details of the Abpromise, please visit <https://www.abcam.com/abpromise> or contact our technical team.

Terms and conditions

- Guarantee only valid for products bought direct from Abcam or one of our authorized distributors