


Product datasheet

Anti-Laminin 2 alpha antibody ab140482

2 Images

Overview

| | |
|----------------------------|---|
| Product name | Anti-Laminin 2 alpha antibody |
| Description | Rabbit polyclonal to Laminin 2 alpha |
| Host species | Rabbit |
| Tested applications | Suitable for: WB, IHC-P |
| Species reactivity | Reacts with: Human Predicted to work with: Mouse, Rat, Rabbit, Horse, Chicken, Cow, Chimpanzee, Macaque monkey, Gorilla, Chinese hamster  |
| Immunogen | Synthetic peptide corresponding to Human Laminin 2 alpha aa 2500-2600 conjugated to keyhole limpet haemocyanin. Database link: P24043 |
| Positive control | This antibody gave a positive signal in Human Heart tissue lysate IHC-P: FFPE human placenta tissue sections. |
| General notes | <p>The Life Science industry has been in the grips of a reproducibility crisis for a number of years. Abcam is leading the way in addressing this with our range of recombinant monoclonal antibodies and knockout edited cell lines for gold-standard validation. Please check that this product meets your needs before purchasing.</p> <p>If you have any questions, special requirements or concerns, please send us an inquiry and/or contact our Support team ahead of purchase. Recommended alternatives for this product can be found below, along with publications, customer reviews and Q&As</p> |

Properties

| | |
|-----------------------------|--|
| Form | Liquid |
| Storage instructions | Shipped at 4°C. Store at +4°C short term (1-2 weeks). Upon delivery aliquot. Store at -20°C or -80°C. Avoid freeze / thaw cycle. |
| Storage buffer | pH: 7.40 Preservative: 0.02% Sodium azide Constituent: PBS |
| | <p>Batches of this product that have a concentration < 1mg/ml may have BSA added as a stabilising agent. If you would like information about the formulation of a specific lot, please contact our scientific support team who will be happy to help.</p> |

| | |
|------------------|-----------------------------|
| Purity | Immunogen affinity purified |
| Clonality | Polyclonal |
| Isotype | IgG |

Applications

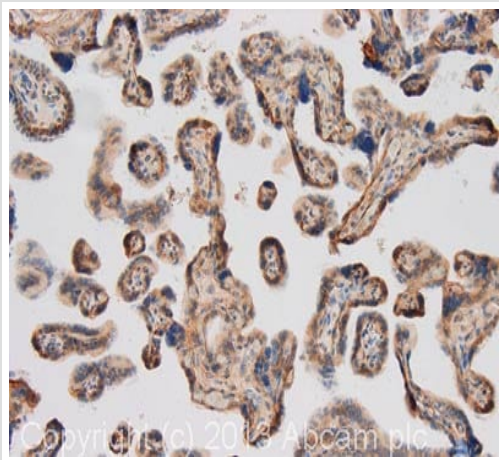
The Abpromise guarantee Our [Abpromise guarantee](#) covers the use of ab140482 in the following tested applications. The application notes include recommended starting dilutions; optimal dilutions/concentrations should be determined by the end user.

| Application | Abreviews | Notes |
|--------------|-----------|--|
| WB | | Use a concentration of 1 µg/ml. Detects a band of approximately 344 kDa (predicted molecular weight: 344 kDa). |
| IHC-P | | Use a concentration of 1 µg/ml. Perform heat mediated antigen retrieval with citrate buffer pH 6 before commencing with IHC staining protocol. |

Target

| | |
|-------------------------------|--|
| Function | Binding to cells via a high affinity receptor, laminin is thought to mediate the attachment, migration and organization of cells into tissues during embryonic development by interacting with other extracellular matrix components. |
| Tissue specificity | Placenta, striated muscle, peripheral nerve, cardiac muscle, pancreas, lung, spleen, kidney, adrenal gland, skin, testis, meninges, choroid plexus, and some other regions of the brain; not in liver, thymus and bone. |
| Involvement in disease | Defects in LAMA2 are the cause of merosin-deficient congenital muscular dystrophy type 1A (MDC1A) [MIM:607855]. MDC1A is characterized by difficulty walking, hypotonia, proximal weakness, hyporeflexia, and white matter hypodensity on MRI. |
| Sequence similarities | Contains 17 laminin EGF-like domains. Contains 5 laminin G-like domains. Contains 2 laminin IV type A domains. Contains 1 laminin N-terminal domain. |
| Domain | The alpha-helical domains I and II are thought to interact with other laminin chains to form a coiled coil structure. Domains VI, IV and G are globular. |
| Cellular localization | Secreted > extracellular space > extracellular matrix > basement membrane. Major component. |

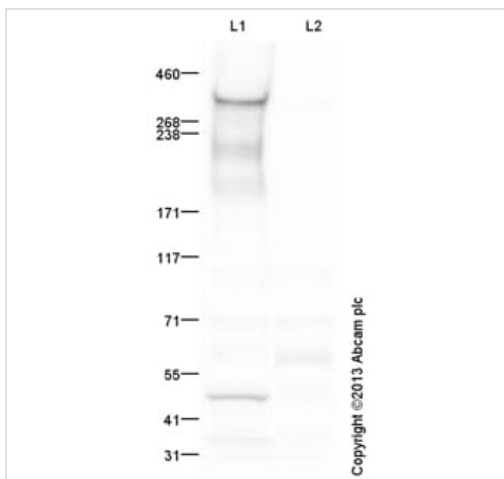
Images



Immunohistochemistry (Formalin/PFA-fixed paraffin-embedded sections) - Anti-Laminin 2 alpha antibody (ab140482)

IHC image of Laminin 2 alpha staining in human placenta formalin fixed paraffin embedded tissue section, performed on a Leica Bond system using the standard protocol F. The section was pre-treated using heat mediated antigen retrieval with sodium citrate buffer (pH6, epitope retrieval solution 1) for 20 mins. The section was then incubated with ab140482, 1µg/ml, for 15 mins at room temperature and detected using an HRP conjugated compact polymer system. DAB was used as the chromogen. The section was then counterstained with haematoxylin and mounted with DPX.

For other IHC staining systems (automated and non-automated) customers should optimize variable parameters such as antigen retrieval conditions, primary antibody concentration and antibody incubation times.



Western blot - Anti-Laminin 2 alpha antibody (ab140482)

All lanes : Anti-Laminin 2 alpha antibody (ab140482) at 1 µg/ml (Milk blocking - 3%)

Lane 1 : Heart (Human) Tissue Lysate - adult normal tissue

Lane 2 : Heart (Human) Tissue Lysate - adult normal tissue with Immunising peptide at 1 µg/ml

Lysates/proteins at 25 µg per lane.

Secondary

All lanes : Goat Anti-Rabbit IgG H&L (HRP) (ab97051) at 1/10000 dilution

Developed using the ECL technique.

Performed under reducing conditions.

Predicted band size: 344 kDa

Observed band size: 344 kDa

Exposure time: 1 minute

This blot was produced using a 3-8% Tris Acetate gel under the TA buffer system. The gel was run at 150V for 60 minutes before being transferred onto a Nitrocellulose membrane at 30V for 70 minutes. The membrane was then blocked for an hour using 3% Milk before being incubated with ab140482 overnight at 4°C. Antibody binding was detected using an anti-rabbit antibody conjugated to HRP, and visualised using ECL development solution.

Please note: All products are "FOR RESEARCH USE ONLY. NOT FOR USE IN DIAGNOSTIC PROCEDURES"

Our Abpromise to you: Quality guaranteed and expert technical support

- Replacement or refund for products not performing as stated on the datasheet
- Valid for 12 months from date of delivery
- Response to your inquiry within 24 hours

- We provide support in Chinese, English, French, German, Japanese and Spanish
- Extensive multi-media technical resources to help you
- We investigate all quality concerns to ensure our products perform to the highest standards

If the product does not perform as described on this datasheet, we will offer a refund or replacement. For full details of the Abpromise, please visit <https://www.abcam.com/abpromise> or contact our technical team.

Terms and conditions

- Guarantee only valid for products bought direct from Abcam or one of our authorized distributors