


## Product datasheet

# Anti-Laminin alpha 4/LAMA4 antibody [CL3185] ab242359

8 Images

### Overview

<b>Product name</b>	Anti-Laminin alpha 4/LAMA4 antibody [CL3185]
<b>Description</b>	Mouse monoclonal [CL3185] to Laminin alpha 4/LAMA4
<b>Host species</b>	Mouse
<b>Tested applications</b>	<b>Suitable for:</b> WB, IHC-P
<b>Species reactivity</b>	<b>Reacts with:</b> Mouse, Human
<b>Immunogen</b>	<p>Recombinant fragment corresponding to Human Laminin alpha 4/LAMA4 aa 670-809. Sequence:</p> <p>ENLLNQARELQAKAESSSDEAVADTSRRVGGALARKSAL KTRLSDAVKQL QAAERGDAQQRLGQSRLITEEANRTTMEVQQATAPMANN LTNWSQNLQHF DSSAYNTAVNSARDAVRNLTEVVPQLLDQLRTVEQKRPA S</p> <p>Database link: <a href="#">Q16363</a></p> <p style="text-align: right;">  <a href="#">Run BLAST with</a>                 <a href="#">Run BLAST with</a> </p>
<b>Epitope</b>	Binds to an epitope located within the peptide sequence GALARKSALKTRLSDA as determined by overlapping synthetic peptides.
<b>Positive control</b>	WB: Recombinant human Laminin-411 and Laminin-421 proteins. IHC-P: Human rectum, placenta and prostate tissue; mouseheart muscle, stomach and epididymis tissue.
<b>General notes</b>	<p>Reproducibility is key to advancing scientific discovery and accelerating scientists' next breakthrough.</p> <p>Abcam is leading the way with our range of recombinant antibodies, knockout-validated antibodies and knockout cell lines, all of which support improved reproducibility.</p> <p>We are also planning to innovate the way in which we present recommended applications and species on our product datasheets, so that only applications &amp; species that have been tested in our own labs, our suppliers or by selected trusted collaborators are covered by our Abpromise™ guarantee.</p> <p>In preparation for this, we have started to update the applications &amp; species that this product is Abpromise guaranteed for.</p>

We are also updating the applications & species that this product has been “predicted to work with,” however this information is not covered by our Abpromise guarantee.

Applications & species from publications and Abreviews that have not been tested in our own labs or in those of our suppliers are not covered by the Abpromise guarantee.

Please check that this product meets your needs before purchasing. If you have any questions, special requirements or concerns, please send us an inquiry and/or contact our Support team ahead of purchase. Recommended alternatives for this product can be found below, as well as customer reviews and Q&As.

## Properties

---

<b>Form</b>	Liquid
<b>Storage instructions</b>	Shipped at 4°C. Store at +4°C short term (1-2 weeks). Upon delivery aliquot. Store at -20°C long term. Avoid freeze / thaw cycle.
<b>Storage buffer</b>	pH: 7.20 Preservative: 0.02% Sodium azide Constituents: 40% Glycerol (glycerin, glycerine), PBS
<b>Purity</b>	Protein A purified
<b>Clonality</b>	Monoclonal
<b>Clone number</b>	CL3185
<b>Isotype</b>	IgG1

## Applications

---

Our [Abpromise guarantee](#) covers the use of **ab242359** in the following tested applications.

The application notes include recommended starting dilutions; optimal dilutions/concentrations should be determined by the end user.

Application	Abreviews	Notes
WB		Use a concentration of 1 µg/ml. Predicted molecular weight: 203 kDa.
IHC-P		1/500 - 1/1000. Perform heat mediated antigen retrieval with citrate buffer pH 6 before commencing with IHC staining protocol.

---

## Target

---

<b>Function</b>	Binding to cells via a high affinity receptor, laminin is thought to mediate the attachment, migration and organization of cells into tissues during embryonic development by interacting with other extracellular matrix components.
<b>Tissue specificity</b>	In adult, strong expression in heart, lung, ovary small and large intestines, placenta, liver; weak or no expression in skeletal muscle, kidney, pancreas, testis, prostate, brain. High expression in fetal lung and kidney. Expression in fetal and newborn tissues is observed in certain mesenchymal cells in tissues such as smooth muscle and dermis.
<b>Involvement in disease</b>	Cardiomyopathy, dilated 1JJ

## Sequence similarities

Contains 4 laminin EGF-like domains.

Contains 5 laminin G-like domains.

## Domain

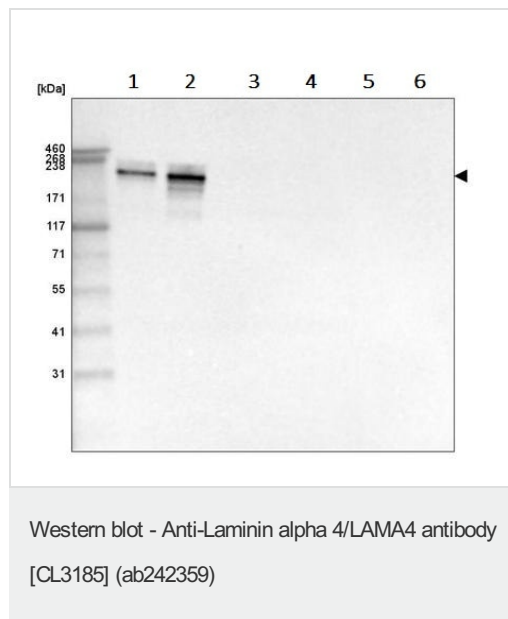
The alpha-helical domains I and II are thought to interact with other laminin chains to form a coiled coil structure.

Domain G is globular.

## Cellular localization

Secreted, extracellular space, extracellular matrix, basement membrane. Major component.

## Images



**All lanes :** Anti-Laminin alpha 4/LAMA4 antibody [CL3185]

(ab242359) at 1 µg/ml

**Lane 1 :** Recombinant human Laminin-411 protein

**Lane 2 :** Recombinant human Laminin-421 protein

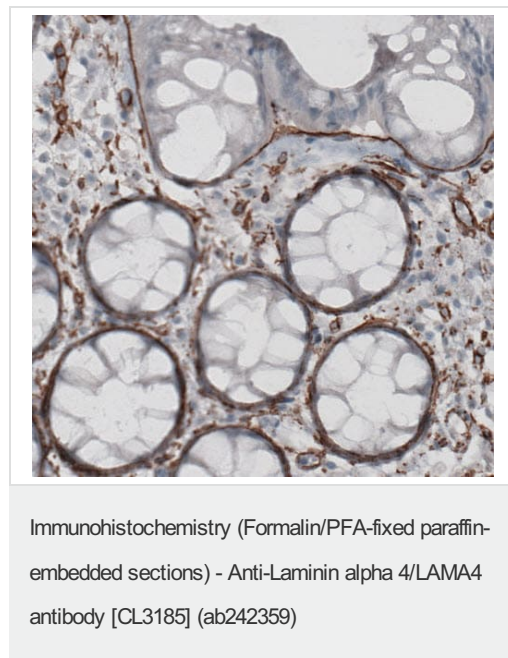
**Lane 3 :** Recombinant human Laminin-511 protein

**Lane 4 :** Recombinant human Laminin-121 protein

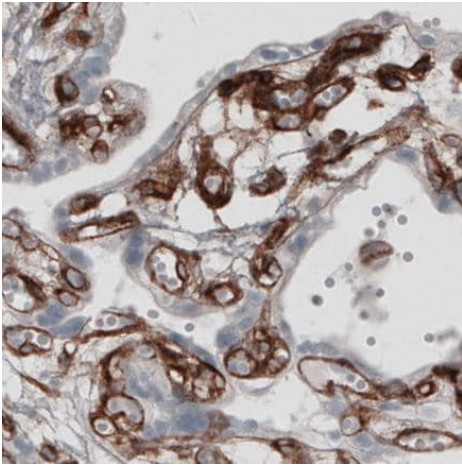
**Lane 5 :** Recombinant human Laminin-221 protein

**Lane 6 :** Recombinant human Laminin-332 protein

**Predicted band size:** 203 kDa

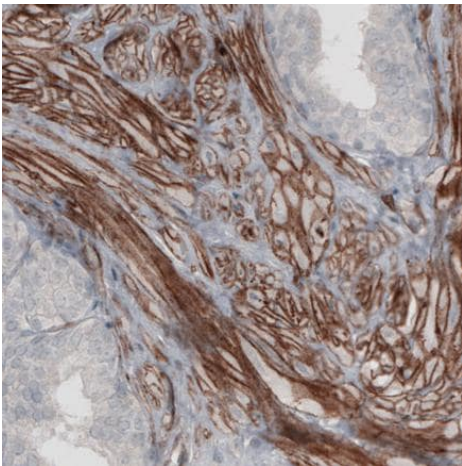


Paraffin-embedded human rectum tissue stained for Laminin alpha 4/LAMA4 with ab242359 at 1/500 dilution in immunohistochemical analysis.



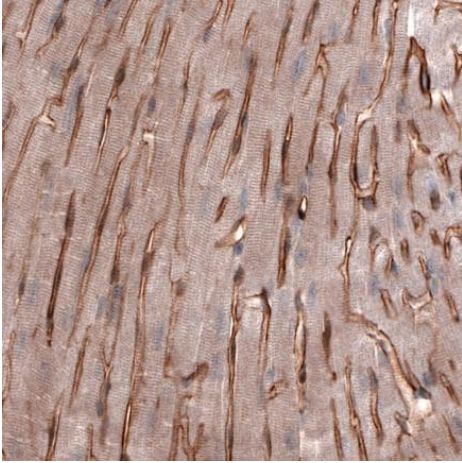
Paraffin-embedded human placenta tissue stained for Laminin alpha 4/LAMA4 with ab242359 at 1/500 dilution in immunohistochemical analysis.

Immunohistochemistry (Formalin/PFA-fixed paraffin-embedded sections) - Anti-Laminin alpha 4/LAMA4 antibody [CL3185] (ab242359)



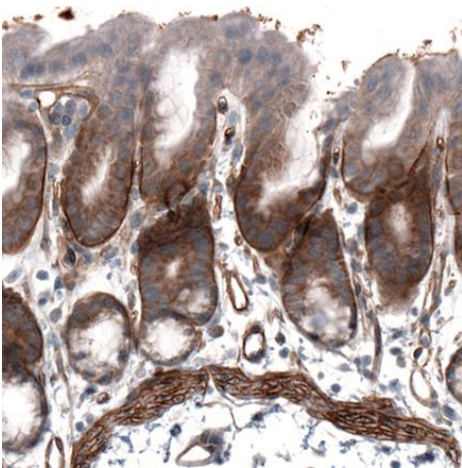
Paraffin-embedded human prostate tissue stained for Laminin alpha 4/LAMA4 with ab242359 at 1/500 dilution in immunohistochemical analysis.

Immunohistochemistry (Formalin/PFA-fixed paraffin-embedded sections) - Anti-Laminin alpha 4/LAMA4 antibody [CL3185] (ab242359)



Paraffin-embedded mouse heart muscle tissue stained for Laminin alpha 4/LAMA4 with ab242359 at 1/500 dilution in immunohistochemical analysis.

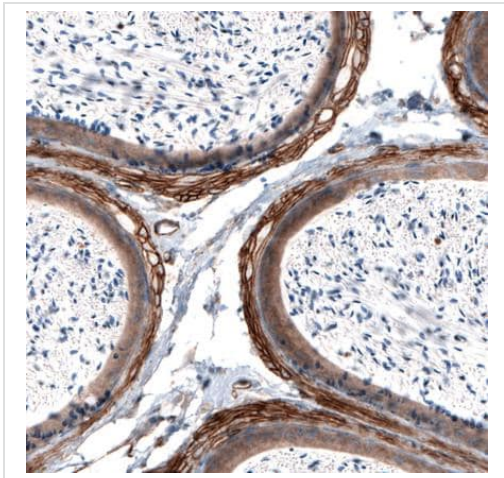
Immunohistochemistry (Formalin/PFA-fixed paraffin-embedded sections) - Anti-Laminin alpha 4/LAMA4 antibody [CL3185] (ab242359)



Paraffin-embedded mouse stomach tissue stained for Laminin alpha 4/LAMA4 with ab242359 at 1/500 dilution in immunohistochemical analysis.

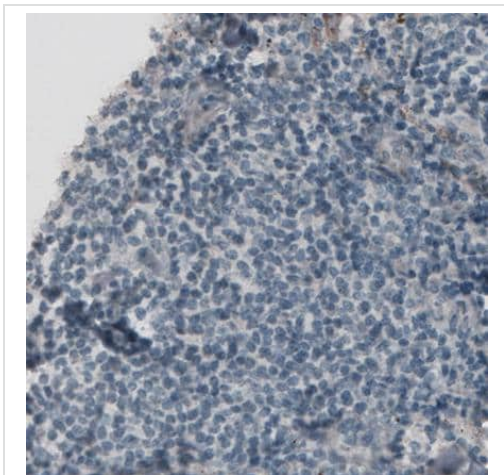
Immunohistochemistry (Formalin/PFA-fixed paraffin-embedded sections) - Anti-Laminin alpha 4/LAMA4 antibody [CL3185] (ab242359)





Paraffin-embedded mouse epididymis tissue stained for Laminin alpha 4/LAMA4 with ab242359 at 1/500 dilution in immunohistochemical analysis.

Immunohistochemistry (Formalin/PFA-fixed paraffin-embedded sections) - Anti-Laminin alpha 4/LAMA4 antibody [CL3185] (ab242359)



**Negative control:**

Paraffin-embedded human lymph node tissue stained for Laminin alpha 4/LAMA4 with ab242359 at 1/500 dilution in immunohistochemical analysis.

Immunohistochemistry (Formalin/PFA-fixed paraffin-embedded sections) - Anti-Laminin alpha 4/LAMA4 antibody [CL3185] (ab242359)

**Please note:** All products are "FOR RESEARCH USE ONLY. NOT FOR USE IN DIAGNOSTIC PROCEDURES"

**Our Promise to you: Quality guaranteed and expert technical support**

- Replacement or refund for products not performing as stated on the datasheet
- Valid for 12 months from date of delivery
- Response to your inquiry within 24 hours

- We provide support in Chinese, English, French, German, Japanese and Spanish
- Extensive multi-media technical resources to help you
- We investigate all quality concerns to ensure our products perform to the highest standards

If the product does not perform as described on this datasheet, we will offer a refund or replacement. For full details of the Abpromise, please visit <https://www.abcam.com/abpromise> or contact our technical team.

### **Terms and conditions**

---

- Guarantee only valid for products bought direct from Abcam or one of our authorized distributors