


Product datasheet

Anti-Laminin beta 1 antibody ab69633

2 References 3 Images

Overview

---

<b>Product name</b>	Anti-Laminin beta 1 antibody
<b>Description</b>	Rabbit polyclonal to Laminin beta 1
<b>Host species</b>	Rabbit
<b>Tested applications</b>	<b>Suitable for:</b> WB, IHC-P, ICC/IF
<b>Species reactivity</b>	<b>Reacts with:</b> Human <b>Predicted to work with:</b> Mouse 
<b>Immunogen</b>	Synthesized peptide derived from the C-terminus of human Laminin beta 1.
<b>Positive control</b>	Hela cells, human liver carcinoma tissue and extracts from HepG2
<b>General notes</b>	<p>Reproducibility is key to advancing scientific discovery and accelerating scientists' next breakthrough.</p> <p>Abcam is leading the way with our range of recombinant antibodies, knockout-validated antibodies and knockout cell lines, all of which support improved reproducibility.</p> <p>We are also planning to innovate the way in which we present recommended applications and species on our product datasheets, so that only applications &amp; species that have been tested in our own labs, our suppliers or by selected trusted collaborators are covered by our Abpromise™ guarantee.</p> <p>In preparation for this, we have started to update the applications &amp; species that this product is Abpromise guaranteed for.</p> <p>We are also updating the applications &amp; species that this product has been “predicted to work with,” however this information is not covered by our Abpromise guarantee.</p> <p>Applications &amp; species from publications and Abreviews that have not been tested in our own labs or in those of our suppliers are not covered by the Abpromise guarantee.</p> <p>Please check that this product meets your needs before purchasing. If you have any questions, special requirements or concerns, please send us an inquiry and/or contact our Support team ahead of purchase. Recommended alternatives for this product can be found below, as well as customer reviews and Q&amp;As.</p>

Properties

---

<b>Form</b>	Liquid
-------------	--------

<b>Storage instructions</b>	Shipped at 4°C. Upon delivery aliquot and store at -20°C. Avoid freeze / thaw cycles.
<b>Storage buffer</b>	pH: 7.40 Preservative: 0.02% Sodium azide Constituents: 50% Glycerol (glycerin, glycerine), 0.87% Sodium chloride, PBS  Without Mg <sup>2+</sup> and Ca <sup>2+</sup>
<b>Purity</b>	Immunogen affinity purified
<b>Clonality</b>	Polyclonal
<b>Isotype</b>	IgG

## Applications

Our [Abpromise guarantee](#) covers the use of **ab69633** in the following tested applications.

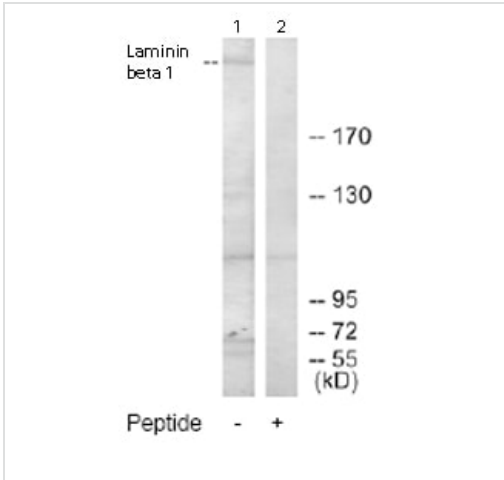
The application notes include recommended starting dilutions; optimal dilutions/concentrations should be determined by the end user.

Application	Abreviews	Notes
WB		1/500 - 1/1000. Detects a band of approximately 60, 67, 110, 130, >170 kDa (predicted molecular weight: 198 kDa).
IHC-P		1/50 - 1/100.
ICC/IF		1/500 - 1/1000.

## Target

<b>Function</b>	Binding to cells via a high affinity receptor, laminin is thought to mediate the attachment, migration and organization of cells into tissues during embryonic development by interacting with other extracellular matrix components.
<b>Sequence similarities</b>	Contains 13 laminin EGF-like domains. Contains 1 laminin IV type B domain. Contains 1 laminin N-terminal domain.
<b>Domain</b>	The alpha-helical domains I and II are thought to interact with other laminin chains to form a coiled coil structure. Domains VI and IV are globular.
<b>Cellular localization</b>	Secreted > extracellular space > extracellular matrix > basement membrane. Major component.

## Images



Western blot - Anti-Laminin beta 1 antibody (ab69633)

**All lanes :** Anti-Laminin beta 1 antibody (ab69633) at 1/500 dilution

**Lane 1 :** Extracts from HepG2 cells

**Lane 2 :** Extracts from HepG2 cells with immunising peptide at 5 µg

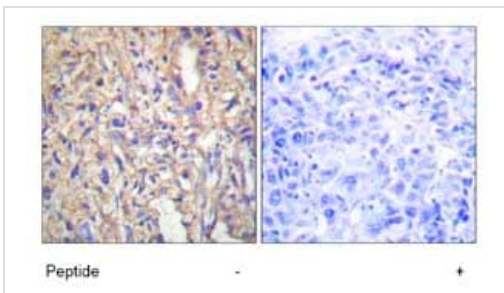
Lysates/proteins at 5 µg per lane.

**Predicted band size:** 198 kDa

**Observed band size:** >170 kDa

[why is the actual band size different from the predicted?](#)

**Additional bands at:** 110 kDa, 130 kDa, 60 kDa, 67 kDa. We are unsure as to the identity of these extra bands.

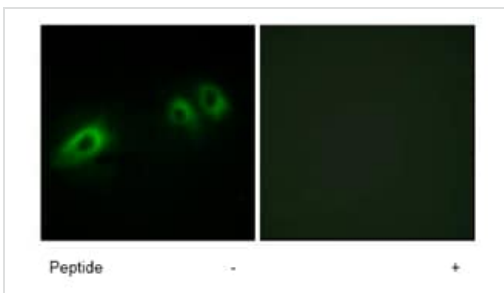


Immunohistochemistry (Formalin/PFA-fixed paraffin-embedded sections) - Anti-Laminin beta 1 antibody (ab69633)

Immunohistochemistry analysis of paraffin-embedded human liver carcinoma tissue using ab69633 at 1:50 dilution.

Left image un-treated.

Right image treated with immunizing peptide.



Immunocytochemistry/ Immunofluorescence - Anti-Laminin beta 1 antibody (ab69633)

Immunofluorescence analysis of HeLa cells using ab69633 at a 1:500 dilution.

Left image un-treated.

Right image treated with immunizing peptide.

**Please note:** All products are "FOR RESEARCH USE ONLY. NOT FOR USE IN DIAGNOSTIC PROCEDURES"

### **Our Abpromise to you: Quality guaranteed and expert technical support**

---

- Replacement or refund for products not performing as stated on the datasheet
- Valid for 12 months from date of delivery
- Response to your inquiry within 24 hours
  
- We provide support in Chinese, English, French, German, Japanese and Spanish
- Extensive multi-media technical resources to help you
- We investigate all quality concerns to ensure our products perform to the highest standards

If the product does not perform as described on this datasheet, we will offer a refund or replacement. For full details of the Abpromise, please visit <https://www.abcam.com/abpromise> or contact our technical team.

### **Terms and conditions**

---

- Guarantee only valid for products bought direct from Abcam or one of our authorized distributors