



Product datasheet

Anti-Laminin beta 2 antibody [CL2979] ab210956

8 Images

Overview

Product name	Anti-Laminin beta 2 antibody [CL2979]
Description	Mouse monoclonal [CL2979] to Laminin beta 2
Host species	Mouse
Tested applications	Suitable for: IHC-P, WB
Species reactivity	Reacts with: Human
Immunogen	Synthetic peptide within Human Laminin beta 2 aa 1292-1306. The exact sequence is proprietary. Sequence: NANHLSGLERDRLA Database link: P55268  Run BLAST with  Run BLAST with
Epitope	ab210956 binds to an epitope located within the peptide sequence NANHLSGLERDRLA (aa 1292-1306).
Positive control	Recombinant protein fragment of human Laminin beta 2; human lung tissue lysate; human heart, testis, stomach, cervix, and colon tissues.

Properties

Form	Liquid
Storage instructions	Shipped at 4°C. Store at +4°C short term (1-2 weeks). Upon delivery aliquot. Store at -20°C long term. Avoid freeze / thaw cycle.
Storage buffer	pH: 7.2 Preservative: 0.02% Sodium azide Constituents: 59% PBS, 40% Glycerol
Purity	Protein A purified
Clonality	Monoclonal
Clone number	CL2979
Isotype	IgG2a

Applications

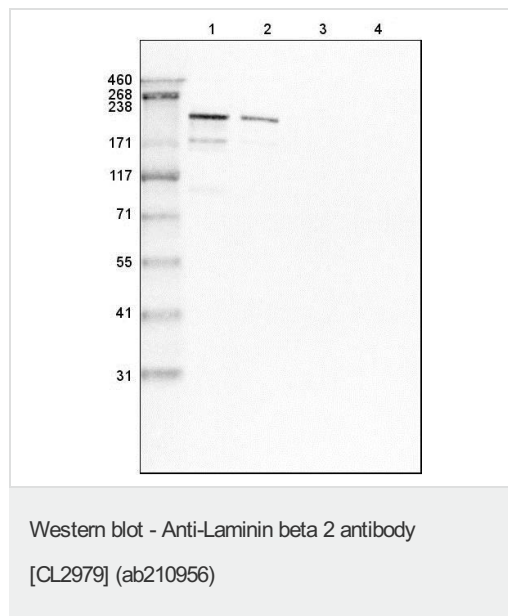
Our [Abpromise guarantee](#) covers the use of **ab210956** in the following tested applications.

The application notes include recommended starting dilutions; optimal dilutions/concentrations should be determined by the end user.

Application	Abreviews	Notes
IHC-P		1/5000 - 1/10000. Perform heat mediated antigen retrieval with citrate buffer pH 6 before commencing with IHC staining protocol.
WB		1/500 - 1/1000. Predicted molecular weight: 196 kDa.

Target

Images



All lanes : Anti-Laminin beta 2 antibody [CL2979] (ab210956) at 1/500 dilution

Lane 1 : Recombinant protein fragment of human Laminin 421

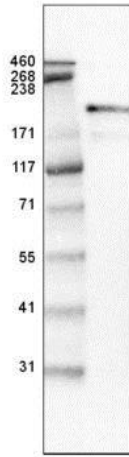
Lane 2 : Recombinant protein fragment of human Laminin 521

Lane 3 : Recombinant protein fragment of human Laminin 332

Lane 4 : Recombinant protein fragment of human Laminin 111

Developed using the ECL technique.

Predicted band size: 196 kDa

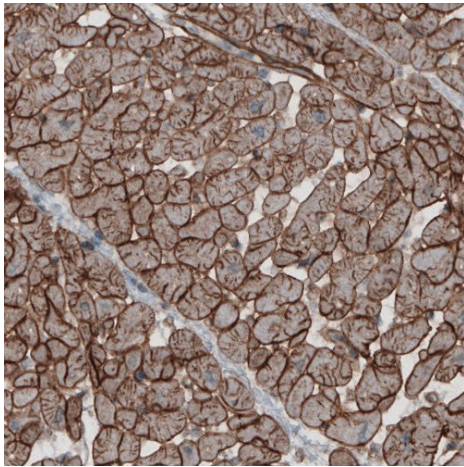


Western blot - Anti-Laminin beta 2 antibody
[CL2979] (ab210956)

Anti-Laminin beta 2 antibody [CL2979] (ab210956) at 1/500
dilution + Human lung tissue lysate

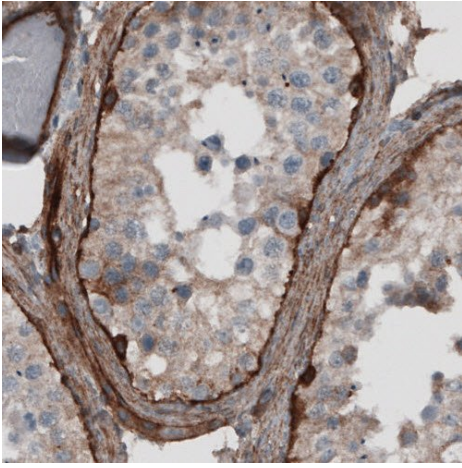
Developed using the ECL technique.

Predicted band size: 196 kDa



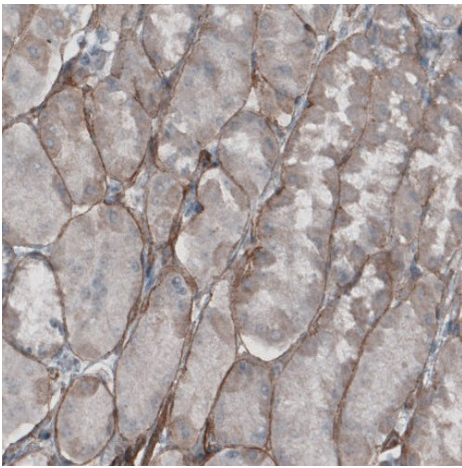
Immunohistochemistry (Formalin/PFA-fixed paraffin-
embedded sections) - Anti-Laminin beta 2 antibody
[CL2979] (ab210956)

Immunohistochemical analysis of paraffin-embedded human heart
tissue, labeling Laminin beta 2 using ab210956 at a 1/5000
dilution.



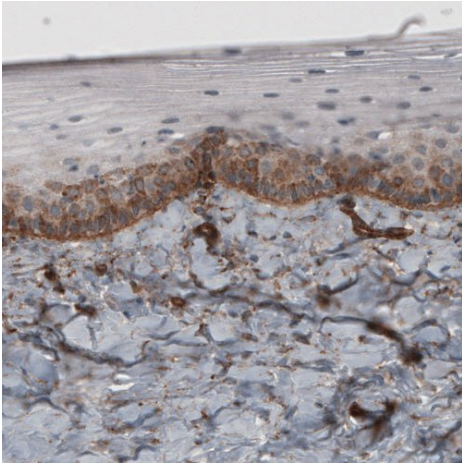
Immunohistochemistry (Formalin/PFA-fixed paraffin-embedded sections) - Anti-Laminin beta 2 antibody [CL2979] (ab210956)

Immunohistochemical analysis of paraffin-embedded human testis tissue, labeling Laminin beta 2 using ab210956 at a 1/5000 dilution.



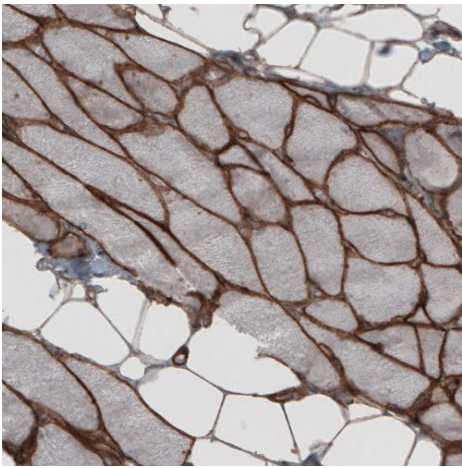
Immunohistochemistry (Formalin/PFA-fixed paraffin-embedded sections) - Anti-Laminin beta 2 antibody [CL2979] (ab210956)

Immunohistochemical analysis of paraffin-embedded human stomach tissue, labeling Laminin beta 2 using ab210956 at a 1/5000 dilution.



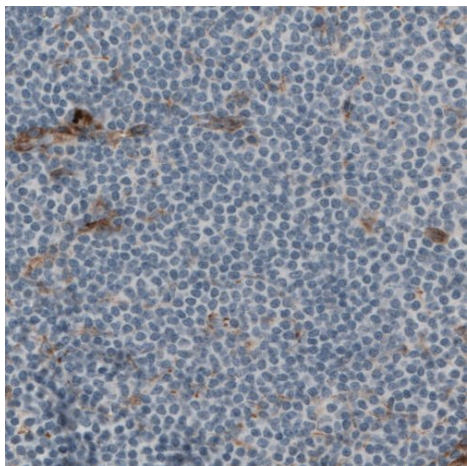
Immunohistochemical analysis of paraffin-embedded human cervix tissue, labeling Laminin beta 2 using ab210956 at a 1/5000 dilution.

Immunohistochemistry (Formalin/PFA-fixed paraffin-embedded sections) - Anti-Laminin beta 2 antibody [CL2979] (ab210956)



Immunohistochemical analysis of paraffin-embedded human colon tissue, labeling Laminin beta 2 using ab210956 at a 1/5000 dilution.

Immunohistochemistry (Formalin/PFA-fixed paraffin-embedded sections) - Anti-Laminin beta 2 antibody [CL2979] (ab210956)



Immunohistochemical analysis of paraffin-embedded human lymph node tissue (negative control), labeling Laminin beta 2 using ab210956 at a 1/5000 dilution.

Immunohistochemistry (Formalin/PFA-fixed paraffin-embedded sections) - Anti-Laminin beta 2 antibody [CL2979] (ab210956)

Please note: All products are "FOR RESEARCH USE ONLY. NOT FOR USE IN DIAGNOSTIC PROCEDURES"

Our Abpromise to you: Quality guaranteed and expert technical support

- Replacement or refund for products not performing as stated on the datasheet
- Valid for 12 months from date of delivery
- Response to your inquiry within 24 hours
- We provide support in Chinese, English, French, German, Japanese and Spanish
- Extensive multi-media technical resources to help you
- We investigate all quality concerns to ensure our products perform to the highest standards

If the product does not perform as described on this datasheet, we will offer a refund or replacement. For full details of the Abpromise, please visit <https://www.abcam.com/abpromise> or contact our technical team.

Terms and conditions

- Guarantee only valid for products bought direct from Abcam or one of our authorized distributors