


## Product datasheet

# Anti-LAMP1 antibody [5H6] ab233567

3 Images

### Overview

---

<b>Product name</b>	Anti-LAMP1 antibody [5H6]
<b>Description</b>	Mouse monoclonal [5H6] to LAMP1
<b>Host species</b>	Mouse
<b>Tested applications</b>	<b>Suitable for:</b> WB, IHC-P, ICC/IF
<b>Species reactivity</b>	<b>Reacts with:</b> Human <b>Predicted to work with:</b> Mouse, Rat, Cow, Pig 
<b>Immunogen</b>	Recombinant fragment corresponding to Human LAMP1 aa 32-350. Expressed in E. coli. NP_005552.3 Database link: <a href="#">P11279</a>
<b>Positive control</b>	WB: HeLa whole cell lysate. IHC-P: Human cerebellum and small intestine tissue. ICC/IF: HeLa cells.
<b>General notes</b>	<p>Reproducibility is key to advancing scientific discovery and accelerating scientists' next breakthrough.</p> <p>Abcam is leading the way with our range of recombinant antibodies, knockout-validated antibodies and knockout cell lines, all of which support improved reproducibility.</p> <p>We are also planning to innovate the way in which we present recommended applications and species on our product datasheets, so that only applications &amp; species that have been tested in our own labs, our suppliers or by selected trusted collaborators are covered by our Abpromise™ guarantee.</p> <p>In preparation for this, we have started to update the applications &amp; species that this product is Abpromise guaranteed for.</p> <p>We are also updating the applications &amp; species that this product has been “predicted to work with,” however this information is not covered by our Abpromise guarantee.</p> <p>Applications &amp; species from publications and Abreviews that have not been tested in our own labs or in those of our suppliers are not covered by the Abpromise guarantee.</p> <p>Please check that this product meets your needs before purchasing. If you have any questions, special requirements or concerns, please send us an inquiry and/or contact our Support team ahead of purchase. Recommended alternatives for this product can be found below, as well as customer reviews and Q&amp;As.</p>

### Properties

## Properties

---

<b>Form</b>	Liquid
<b>Storage instructions</b>	Shipped at 4°C. Store at +4°C short term (1-2 weeks). Upon delivery aliquot. Store at -20°C long term. Avoid freeze / thaw cycle.
<b>Storage buffer</b>	Preservative: 0.07% Sodium azide Constituent: PBS
<b>Purity</b>	Affinity purified
<b>Purification notes</b>	Purified from TCS.
<b>Clonality</b>	Monoclonal
<b>Clone number</b>	5H6
<b>Isotype</b>	IgG1

## Applications

---

Our [Abpromise guarantee](#) covers the use of **ab233567** in the following tested applications.

The application notes include recommended starting dilutions; optimal dilutions/concentrations should be determined by the end user.

Application	Abreviews	Notes
WB		1/10000.
IHC-P		Use a concentration of 10 µg/ml. Perform heat mediated antigen retrieval before commencing with IHC staining protocol.
ICC/IF		1/2000.

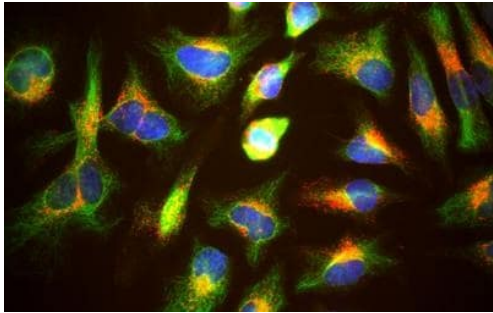
## Target

---

<b>Function</b>	Presents carbohydrate ligands to selectins. Also implicated in tumor cell metastasis.
<b>Sequence similarities</b>	Belongs to the LAMP family.
<b>Post-translational modifications</b>	O- and N-glycosylated; some of the 18 N-linked glycans are polylactosaminoglycans.
<b>Cellular localization</b>	Cell membrane. Endosome membrane. Lysosome membrane. This protein shuttles between lysosomes, endosomes, and the plasma membrane.

## Images

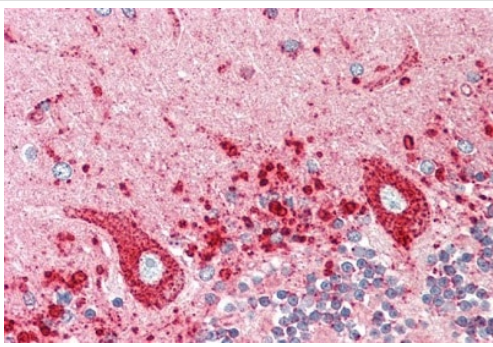
---



Immunocytochemistry/ Immunofluorescence - Anti-LAMP1 antibody [5H6] (ab233567)

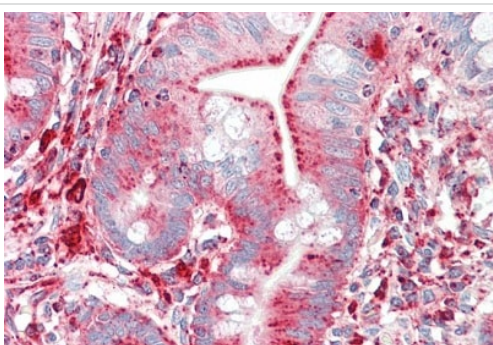
HeLa (human epithelial cell line from cervix adenocarcinoma) cells stained for LAMP1 (red) using ab233567 at 1/2000 dilution in ICC/IF.

Counterstained with chicken polyclonal antibody to Vimentin (green) and DNA (blue).



Immunohistochemistry (Formalin/PFA-fixed paraffin-embedded sections) - Anti-LAMP1 antibody [5H6] (ab233567)

Formalin-fixed, paraffin-embedded human cerebellum tissue stained for LAMP1 using ab233567 at 10 µg/ml in immunohistochemical analysis.



Immunohistochemistry (Formalin/PFA-fixed paraffin-embedded sections) - Anti-LAMP1 antibody [5H6] (ab233567)

Formalin-fixed, paraffin-embedded human cerebellum tissue stained for LAMP1 using ab233567 at 10 µg/ml in immunohistochemical analysis.

**Please note:** All products are "FOR RESEARCH USE ONLY. NOT FOR USE IN DIAGNOSTIC PROCEDURES"

### **Our Abpromise to you: Quality guaranteed and expert technical support**

---

- Replacement or refund for products not performing as stated on the datasheet
- Valid for 12 months from date of delivery
- Response to your inquiry within 24 hours
  
- We provide support in Chinese, English, French, German, Japanese and Spanish
- Extensive multi-media technical resources to help you
- We investigate all quality concerns to ensure our products perform to the highest standards

If the product does not perform as described on this datasheet, we will offer a refund or replacement. For full details of the Abpromise, please visit <https://www.abcam.com/abpromise> or contact our technical team.

### **Terms and conditions**

---

- Guarantee only valid for products bought direct from Abcam or one of our authorized distributors