

Product datasheet

Anti-LAMP1 antibody ab62562

★★★★★ 1 Abreviews 11 References 4 Images

Overview

Product name	Anti-LAMP1 antibody
Description	Rabbit polyclonal to LAMP1
Host species	Rabbit
Tested applications	Suitable for: IHC-P, WB, ICC/IF
Species reactivity	Reacts with: Mouse, Rat, Human
Immunogen	A 15 amino acid peptide from near the centre of human LAMP1.
Positive control	EL4 cell lysate. Human colon tissue.
General notes	<p>Reproducibility is key to advancing scientific discovery and accelerating scientists' next breakthrough.</p> <p>Abcam is leading the way with our range of recombinant antibodies, knockout-validated antibodies and knockout cell lines, all of which support improved reproducibility.</p> <p>We are also planning to innovate the way in which we present recommended applications and species on our product datasheets, so that only applications & species that have been tested in our own labs, our suppliers or by selected trusted collaborators are covered by our Abpromise™ guarantee.</p> <p>In preparation for this, we have started to update the applications & species that this product is Abpromise guaranteed for.</p> <p>We are also updating the applications & species that this product has been “predicted to work with,” however this information is not covered by our Abpromise guarantee.</p> <p>Applications & species from publications and Abreviews that have not been tested in our own labs or in those of our suppliers are not covered by the Abpromise guarantee.</p> <p>Please check that this product meets your needs before purchasing. If you have any questions, special requirements or concerns, please send us an inquiry and/or contact our Support team ahead of purchase. Recommended alternatives for this product can be found below, as well as customer reviews and Q&As.</p>

Properties

Form	Liquid
Storage instructions	Shipped at 4°C. Store at +4°C short term (1-2 weeks). Upon delivery aliquot. Store at -20°C or -

80°C. Avoid freeze / thaw cycle.

Storage buffer

pH: 7.2
Preservative: 0.02% Sodium azide
Constituent: PBS

Purity

Immunogen affinity purified

Clonality

Polyclonal

Isotype

IgG

Applications

Our [Abpromise guarantee](#) covers the use of **ab62562** in the following tested applications.

The application notes include recommended starting dilutions; optimal dilutions/concentrations should be determined by the end user.

Application	Abreviews	Notes
IHC-P		Use a concentration of 2 µg/ml.
WB		Use a concentration of 1 - 2 µg/ml. Detects a band of approximately 110 kDa (predicted molecular weight: 45 kDa).
ICC/IF	★★★★☆	Use a concentration of 20 µg/ml.

Target

Function

Presents carbohydrate ligands to selectins. Also implicated in tumor cell metastasis.

Sequence similarities

Belongs to the LAMP family.

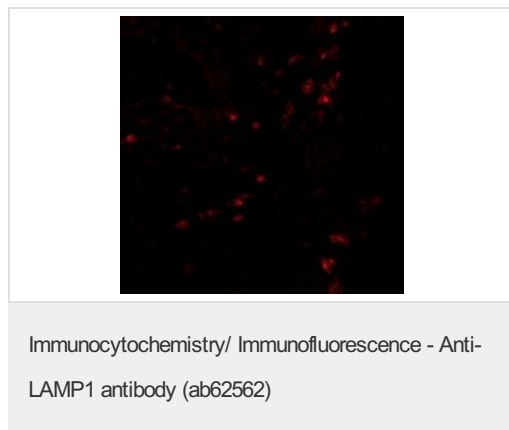
Post-translational modifications

O- and N-glycosylated; some of the 18 N-linked glycans are polylactosaminoglycans.

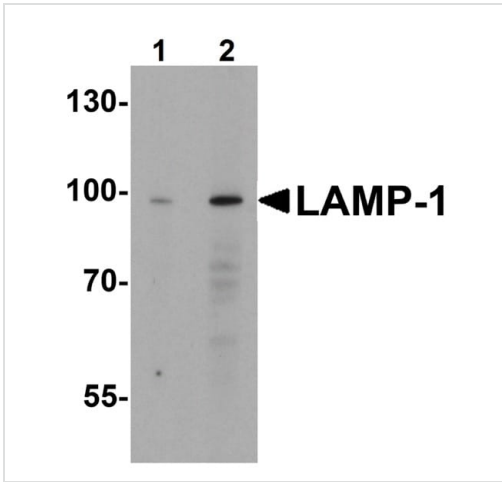
Cellular localization

Cell membrane. Endosome membrane. Lysosome membrane. This protein shuttles between lysosomes, endosomes, and the plasma membrane.

Images



Immunofluorescence of LAMP-1 in Human Colon cells using ab62562 at 20 ug/mL.



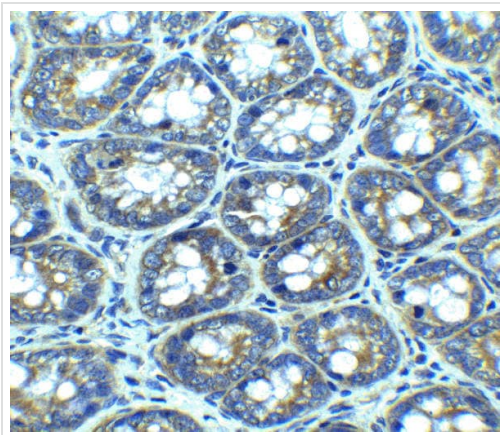
Western blot - Anti-LAMP1 antibody (ab62562)

Lane 1 : Anti-LAMP1 antibody (ab62562) at 1 µg/ml

Lane 2 : Anti-LAMP1 antibody (ab62562) at 2 µg/ml

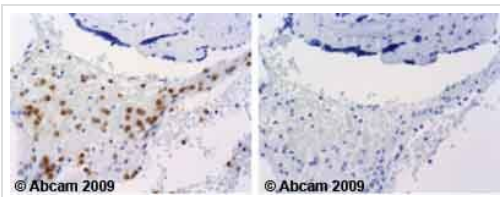
All lanes : EL4 cell lysate

Predicted band size: 45 kDa



Immunohistochemistry of LAMP-1 in rat colon tissue with ab62562 at 2.5 µg/ml.

Immunohistochemistry (Formalin/PFA-fixed paraffin-embedded sections) - Anti-LAMP1 antibody (ab62562)



Immunohistochemistry (Formalin/PFA-fixed paraffin-embedded sections) - Anti-LAMP1 antibody (ab62562)

Ab62562 staining human normal placenta. Staining is localised to cytoplasmic and nucleus compartments.

Left panel: with primary antibody at 2 µg/ml. Right panel: isotype control.

Sections were stained using an automated system DAKO Autostainer Plus , at room temperature. Sections were rehydrated and antigen retrieved with the Dako 3-in-1 AR buffers EDTA pH 9.0 in a DAKO PT Link. Slides were peroxidase blocked in 3% H₂O₂ in methanol for 10 minutes. They were then blocked with Dako Protein block for 10 minutes (containing casein 0.25% in PBS) then incubated with primary antibody for 20 minutes and detected with Dako Envision Flex amplification kit for 30 minutes. Colorimetric detection was completed with diaminobenzidine for 5 minutes. Slides were counterstained with Haematoxylin and coverslipped under DePeX. Please note that for manual staining we recommend

to optimize the primary antibody concentration and incubation time (overnight incubation), and amplification may be requi

Please note: All products are "FOR RESEARCH USE ONLY. NOT FOR USE IN DIAGNOSTIC PROCEDURES"

Our Abpromise to you: Quality guaranteed and expert technical support

- Replacement or refund for products not performing as stated on the datasheet
- Valid for 12 months from date of delivery
- Response to your inquiry within 24 hours

- We provide support in Chinese, English, French, German, Japanese and Spanish
- Extensive multi-media technical resources to help you
- We investigate all quality concerns to ensure our products perform to the highest standards

If the product does not perform as described on this datasheet, we will offer a refund or replacement. For full details of the Abpromise, please visit <https://www.abcam.com/abpromise> or contact our technical team.

Terms and conditions

- Guarantee only valid for products bought direct from Abcam or one of our authorized distributors