

Product datasheet

Anti-Langerin antibody ab272895

2 Images

Overview

---

<b>Product name</b>	Anti-Langerin antibody
<b>Description</b>	Rabbit polyclonal to Langerin
<b>Host species</b>	Rabbit
<b>Tested applications</b>	<b>Suitable for:</b> WB
<b>Species reactivity</b>	<b>Reacts with:</b> Mouse, Human
<b>Immunogen</b>	Recombinant fragment within Human Langerin (internal sequence). The exact sequence is proprietary. Database link: <a href="#">Q9UJ71</a>
<b>Positive control</b>	WB: A549, C8D30, NIH/3T3, C2C12 cells.
<b>General notes</b>	<p>The Life Science industry has been in the grips of a reproducibility crisis for a number of years. Abcam is leading the way in addressing this with our range of recombinant monoclonal antibodies and knockout edited cell lines for gold-standard validation. Please check that this product meets your needs before purchasing.</p> <p>If you have any questions, special requirements or concerns, please send us an inquiry and/or contact our Support team ahead of purchase. Recommended alternatives for this product can be found below, along with publications, customer reviews and Q&amp;As</p>

Properties

---

<b>Form</b>	Liquid
<b>Storage instructions</b>	Shipped at 4°C. Store at +4°C short term (1-2 weeks). Upon delivery aliquot. Store at -20°C long term. Avoid freeze / thaw cycle.
<b>Storage buffer</b>	pH: 7.00 Preservative: 0.01% Thimerosal (merthiolate) Constituents: 1.21% Tris, 0.75% Glycine, 20% Glycerol (glycerin, glycerine)
<b>Purity</b>	Immunogen affinity purified
<b>Clonality</b>	Polyclonal
<b>Isotype</b>	IgG

Applications

---

## The Abpromise guarantee

Our [Abpromise guarantee](#) covers the use of ab272895 in the following tested applications.

The application notes include recommended starting dilutions; optimal dilutions/concentrations should be determined by the end user.

Application	Abreviews	Notes
WB		1/500 - 1/3000.

## Target

### Function

Calcium-dependent lectin displaying mannose-binding specificity. Induces the formation of Birbeck granules (BGs); is a potent regulator of membrane superimposition and zippering. Binds to sulfated as well as mannosylated glycans, keratan sulfate (KS) and beta-glucans. Facilitates uptake of antigens and is involved in the routing and/or processing of antigen for presentation to T cells. Major receptor on primary Langerhans cells for *Candida* species, *Saccharomyces* species, and *Malassezia furfur*. Protects against human immunodeficiency virus-1 (HIV-1) infection. Binds to high-mannose structures present on the envelope glycoprotein which is followed by subsequent targeting of the virus to the Birbeck granules leading to its rapid degradation.

### Tissue specificity

Exclusively expressed by Langerhans cells. Expressed in astrocytoma and malignant ependymoma, but not in normal brain tissues.

### Involvement in disease

Defects in CD207 are the cause of Birbeck granule deficiency (BIRGD) [MIM:613393]. It is a condition characterized by the absence of Birbeck granules in epidermal Langerhans cells. Despite the lack of Birbeck granules Langerhans cells are present in normal numbers and have normal morphologic characteristics and antigen-presenting capacity.

### Sequence similarities

Contains 1 C-type lectin domain.

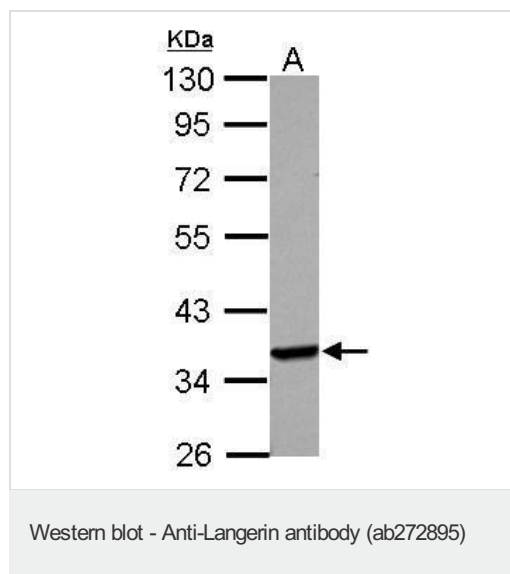
### Domain

The C-type lectin domain mediates dual recognition of both sulfated and mannosylated glycans.

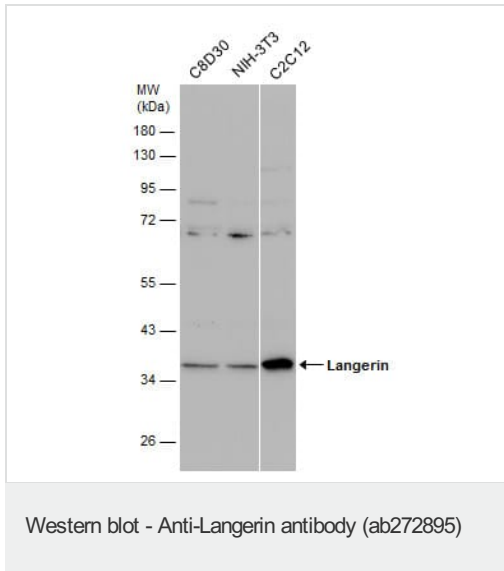
### Cellular localization

Membrane. Found in Birbeck granules (BGs), which are organelles consisting of superimposed and zippered membranes.

## Images



Anti-Langerin antibody (ab272895) at 1/1000 dilution + A549 whole cell lysate at 30 µg



**All lanes** : Anti-Langerin antibody (ab272895) at 1/1000 dilution

**Lane 1** : C8D30 whole cell lysate

**Lane 2** : NIH/3T3 whole cell lysate

**Lane 3** : C2C12 whole cell lysate

Lysates/proteins at 30 µg per lane.

**Please note:** All products are "FOR RESEARCH USE ONLY. NOT FOR USE IN DIAGNOSTIC PROCEDURES"

### Our Abpromise to you: Quality guaranteed and expert technical support

- Replacement or refund for products not performing as stated on the datasheet
- Valid for 12 months from date of delivery
- Response to your inquiry within 24 hours
- We provide support in Chinese, English, French, German, Japanese and Spanish
- Extensive multi-media technical resources to help you
- We investigate all quality concerns to ensure our products perform to the highest standards

If the product does not perform as described on this datasheet, we will offer a refund or replacement. For full details of the Abpromise, please visit <https://www.abcam.com/abpromise> or contact our technical team.

### Terms and conditions

- Guarantee only valid for products bought direct from Abcam or one of our authorized distributors