

Product datasheet

Anti-LAP2 antibody ab226352

3 Images

Overview

Product name	Anti-LAP2 antibody
Description	Rabbit polyclonal to LAP2
Host species	Rabbit
Tested applications	Suitable for: IHC-P, WB, IP
Species reactivity	Reacts with: Human
Immunogen	Synthetic peptide within Human LAP2 aa 300-350. The exact sequence is proprietary. Isoform beta. Database link: P42167-1
Positive control	WB: HeLa and HEK-293T whole cell lysates. IP: HEK-293T whole cell lysate. IHC-P: Human ovarian carcinoma tissue.
General notes	<p>Reproducibility is key to advancing scientific discovery and accelerating scientists' next breakthrough.</p> <p>Abcam is leading the way with our range of recombinant antibodies, knockout-validated antibodies and knockout cell lines, all of which support improved reproducibility.</p> <p>We are also planning to innovate the way in which we present recommended applications and species on our product datasheets, so that only applications & species that have been tested in our own labs, our suppliers or by selected trusted collaborators are covered by our Abpromise™ guarantee.</p> <p>In preparation for this, we have started to update the applications & species that this product is Abpromise guaranteed for.</p> <p>We are also updating the applications & species that this product has been “predicted to work with,” however this information is not covered by our Abpromise guarantee.</p> <p>Applications & species from publications and Abreviews that have not been tested in our own labs or in those of our suppliers are not covered by the Abpromise guarantee.</p> <p>Please check that this product meets your needs before purchasing. If you have any questions, special requirements or concerns, please send us an inquiry and/or contact our Support team ahead of purchase. Recommended alternatives for this product can be found below, as well as customer reviews and Q&As.</p>

Properties

Form	Liquid
Storage instructions	Shipped at 4°C. Store at +4°C short term (1-2 weeks). Upon delivery aliquot. Store at -20°C long term. Avoid freeze / thaw cycle.
Storage buffer	pH: 7 Preservative: 0.09% Sodium azide Constituent: Tris citrate/phosphate
	pH 7 to 8
Purity	Immunogen affinity purified
Clonality	Polyclonal

Applications

Our [Abpromise guarantee](#) covers the use of **ab226352** in the following tested applications.

The application notes include recommended starting dilutions; optimal dilutions/concentrations should be determined by the end user.

Application	Abreviews	Notes
IHC-P		1/500 - 1/2000. Perform heat mediated antigen retrieval with citrate buffer pH 6 before commencing with IHC staining protocol.
WB		1/1000 - 1/5000. Predicted molecular weight: 75 kDa.
IP		Use at 2-10 µg/mg of lysate.

Target

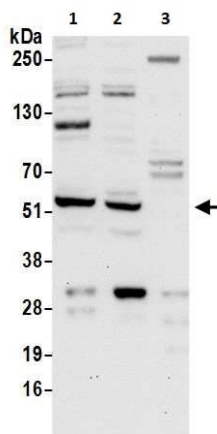
Relevance

Lamins are type V intermediate filament proteins and are grouped into constitutively expressed B-type lamins and developmentally regulated A-type lamins. Lamin-binding proteins in the nuclear lamina and the nuclear interior include several protein families and/or types of proteins in higher eukaryotes such as the inner nuclear membrane proteins, lamin B receptor, emerin, and MAN1, three isoforms of lamina-associated polypeptide 1 (LAP1), and several isoforms of LAP2. Up to six LAP 2 isoforms derive from a single gene by alternative splicing in mammals and various isoforms have been described in *Xenopus*. The best characterized LAP2 isoforms are the inner nuclear membrane protein LAP2 beta and the nucleoplasmic protein LAP2 alpha, which are identical in their N-terminal 187-amino acid constant region but differ in their C termini. While LAP2 beta binds to B-type lamins at the nuclear periphery and was suggested to regulate nuclear lamina growth, LAP2 alpha specifically interacts with A-type lamins within the nuclear interior as part of a detergent/salt-resistant nucleoskeletal structure.

Cellular localization

Nuclear

Images



Western blot - Anti-LAP2 antibody (ab226352)

All lanes : Anti-LAP2 antibody (ab226352) at 0.4 $\mu\text{g/ml}$

Lane 1 : HeLa (human epithelial cell line from cervix adenocarcinoma) whole cell lysate

Lane 2 : HEK-293T (human epithelial cell line from embryonic kidney transformed with large T antigen) whole cell lysate

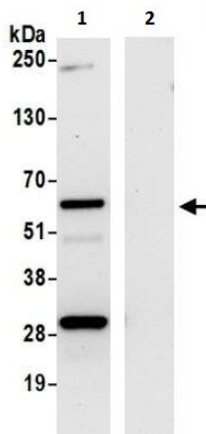
Lane 3 : Jurkat (human T cell leukemia cell line from peripheral blood) whole cell lysate

Lysates/proteins at 50 μg per lane.

Developed using the ECL technique.

Predicted band size: 75 kDa

Exposure time: 30 seconds



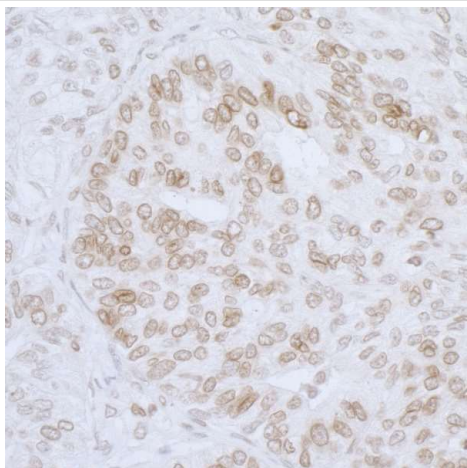
Immunoprecipitation - Anti-LAP2 antibody (ab226352)

LAP2 was immunoprecipitated from HEK-293T (human epithelial cell line from embryonic kidney transformed with large T antigen) whole cell lysate (1 mg for IP, 20% of IP loaded) with ab226352 at 6 μg per reaction. Western blot was performed from the immunoprecipitate using a different rabbit anti-LAP2 antibody at 1 $\mu\text{g/ml}$.

Lane 1: ab226352 IP in HEK-293T whole cell lysate.

Lane 2: Control IgG IP in HEK-293T whole cell lysate.

Detection: Chemiluminescence with exposure time of 30 seconds.



Immunohistochemistry (Formalin/PFA-fixed paraffin-embedded sections) - Anti-LAP2 antibody (ab226352)

Formalin-fixed, paraffin-embedded human ovarian carcinoma tissue stained for LAP2 using ab226352 at 1/1000 dilution in immunohistochemical analysis.

Detection: DAB staining.

Please note: All products are "FOR RESEARCH USE ONLY. NOT FOR USE IN DIAGNOSTIC PROCEDURES"

Our Abpromise to you: Quality guaranteed and expert technical support

- Replacement or refund for products not performing as stated on the datasheet
- Valid for 12 months from date of delivery
- Response to your inquiry within 24 hours

- We provide support in Chinese, English, French, German, Japanese and Spanish
- Extensive multi-media technical resources to help you
- We investigate all quality concerns to ensure our products perform to the highest standards

If the product does not perform as described on this datasheet, we will offer a refund or replacement. For full details of the Abpromise, please visit <https://www.abcam.com/abpromise> or contact our technical team.

Terms and conditions

- Guarantee only valid for products bought direct from Abcam or one of our authorized distributors