




Product datasheet

Anti-LAPTM4B antibody [CL5287] ab242372

4 Images

Overview

Product name	Anti-LAPTM4B antibody [CL5287]
Description	Mouse monoclonal [CL5287] to LAPTM4B
Host species	Mouse
Tested applications	Suitable for: IHC-P
Species reactivity	<p>Reacts with: Human</p> <p>Predicted to work with: Rhesus monkey </p>
Immunogen	<p>Synthetic peptide corresponding to Human LAPTM4B aa 290-309. Sequence:</p> <p>DTTVLLPPYDDATVNGAAKE</p> <p>Database link: Q86VH4</p> <p style="text-align: right;">  Run BLAST with  Run BLAST with </p>
Positive control	IHC-P: Human kidney, heart muscle, testis and skeletal muscle fibre tissue.
General notes	<p>Reproducibility is key to advancing scientific discovery and accelerating scientists' next breakthrough.</p> <p>Abcam is leading the way with our range of recombinant antibodies, knockout-validated antibodies and knockout cell lines, all of which support improved reproducibility.</p> <p>We are also planning to innovate the way in which we present recommended applications and species on our product datasheets, so that only applications & species that have been tested in our own labs, our suppliers or by selected trusted collaborators are covered by our Abpromise™ guarantee.</p> <p>In preparation for this, we have started to update the applications & species that this product is Abpromise guaranteed for.</p> <p>We are also updating the applications & species that this product has been “predicted to work with,” however this information is not covered by our Abpromise guarantee.</p> <p>Applications & species from publications and Abreviews that have not been tested in our own labs or in those of our suppliers are not covered by the Abpromise guarantee.</p> <p>Please check that this product meets your needs before purchasing. If you have any questions, special requirements or concerns, please send us an inquiry and/or contact our Support team ahead of purchase. Recommended alternatives for this product can be found below, as well as customer reviews and Q&As.</p>

Properties

Form	Liquid
Storage instructions	Shipped at 4°C. Store at +4°C short term (1-2 weeks). Upon delivery aliquot. Store at -20°C long term. Avoid freeze / thaw cycle.
Storage buffer	pH: 7.20 Preservative: 0.02% Sodium azide Constituents: 40% Glycerol (glycerin, glycerine), PBS
Purity	Protein A purified
Purification notes	Purified from TCS.
Clonality	Monoclonal
Clone number	CL5287
Isotype	IgG2b

Applications

Our [Abpromise guarantee](#) covers the use of **ab242372** in the following tested applications.

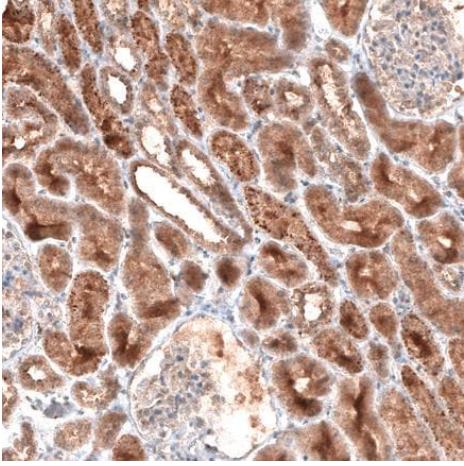
The application notes include recommended starting dilutions; optimal dilutions/concentrations should be determined by the end user.

Application	Abreviews	Notes
IHC-P		1/200 - 1/500. Perform heat mediated antigen retrieval with citrate buffer pH 6 before commencing with IHC staining protocol.

Target

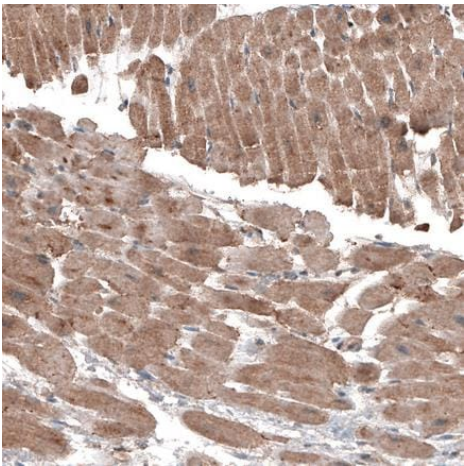
Relevance	LAPTM4B belongs to the LAPTM4/LAPTM5 transporter family. It has an active role in disease progression of malignant cells and is involved in cell proliferation and multidrug resistance. The genetic polymorphism of LAPTM4B is a potential risk factor for the development of colon cancer and gastric cancer. The research results also indicated that LAPTM4B may be a clinically useful prognostic indicator for ovarian carcinoma and may play a role in human hepatocellular carcinoma.
Cellular localization	Endomembrane system; Multi pass membrane protein.

Images



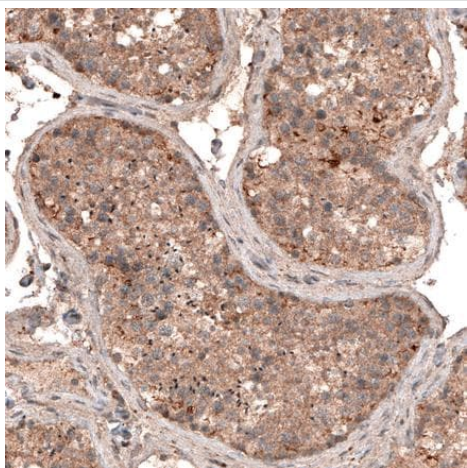
Formalin-fixed, paraffin-embedded human kidney tissue stained for LAPT4B with ab242372 at a 1:200 dilution in immunohistochemical analysis.

Immunohistochemistry (Formalin/PFA-fixed paraffin-embedded sections) - Anti-LAPT4B antibody [CL5287] (ab242372)



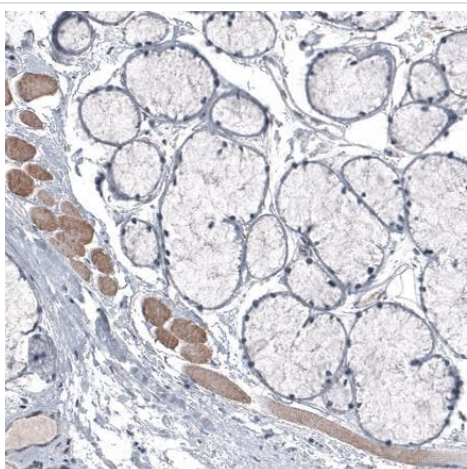
Formalin-fixed, paraffin-embedded human heart muscle tissue stained for LAPT4B with ab242372 at a 1:200 dilution in immunohistochemical analysis.

Immunohistochemistry (Formalin/PFA-fixed paraffin-embedded sections) - Anti-LAPT4B antibody [CL5287] (ab242372)



Immunohistochemistry (Formalin/PFA-fixed paraffin-embedded sections) - Anti-LAPT4B antibody [CL5287] (ab242372)

Formalin-fixed, paraffin-embedded human testis tissue stained for LAPT4B with ab242372 at a 1:200 dilution in immunohistochemical analysis.



Immunohistochemistry (Formalin/PFA-fixed paraffin-embedded sections) - Anti-LAPT4B antibody [CL5287] (ab242372)

Negative control - Formalin-fixed, paraffin-embedded human salivary gland (glandular cells) tissue stained for LAPT4B with ab242372 at a 1:200 dilution in immunohistochemical analysis. Skeletal muscle fibres are positively stained.

Please note: All products are "FOR RESEARCH USE ONLY. NOT FOR USE IN DIAGNOSTIC PROCEDURES"

Our Promise to you: Quality guaranteed and expert technical support

- Replacement or refund for products not performing as stated on the datasheet
- Valid for 12 months from date of delivery

- Response to your inquiry within 24 hours
- We provide support in Chinese, English, French, German, Japanese and Spanish
- Extensive multi-media technical resources to help you
- We investigate all quality concerns to ensure our products perform to the highest standards

If the product does not perform as described on this datasheet, we will offer a refund or replacement. For full details of the Abpromise, please visit <https://www.abcam.com/abpromise> or contact our technical team.

Terms and conditions

- Guarantee only valid for products bought direct from Abcam or one of our authorized distributors