

Product datasheet

Anti-LAS1L antibody ab236954

2 Images

Overview

Product name	Anti-LAS1L antibody
Description	Rabbit polyclonal to LAS1L
Host species	Rabbit
Tested applications	Suitable for: WB, ICC/IF
Species reactivity	Reacts with: Human
Immunogen	Recombinant fragment corresponding to Human LAS1L aa 490-565. Database link: Q9Y4W2
Positive control	WB: HEK-293 cell lysate. ICC/IF: HepG2 cells.
General notes	<p>Reproducibility is key to advancing scientific discovery and accelerating scientists' next breakthrough.</p> <p>Abcam is leading the way with our range of recombinant antibodies, knockout-validated antibodies and knockout cell lines, all of which support improved reproducibility.</p> <p>We are also planning to innovate the way in which we present recommended applications and species on our product datasheets, so that only applications & species that have been tested in our own labs, our suppliers or by selected trusted collaborators are covered by our Abpromise™ guarantee.</p> <p>In preparation for this, we have started to update the applications & species that this product is Abpromise guaranteed for.</p> <p>We are also updating the applications & species that this product has been “predicted to work with,” however this information is not covered by our Abpromise guarantee.</p> <p>Applications & species from publications and Abreviews that have not been tested in our own labs or in those of our suppliers are not covered by the Abpromise guarantee.</p> <p>Please check that this product meets your needs before purchasing. If you have any questions, special requirements or concerns, please send us an inquiry and/or contact our Support team ahead of purchase. Recommended alternatives for this product can be found below, as well as customer reviews and Q&As.</p>

Properties

Form	Liquid
Storage instructions	Shipped at 4°C. Store at +4°C short term (1-2 weeks). Upon delivery aliquot. Store at -20°C long

term. Avoid freeze / thaw cycle.

Storage buffer

pH: 7.40

Constituents: PBS, 50% Glycerol (glycerin, glycerine), 0.03% Proclin 300

Purity

Protein G purified

Purification notes

Purity >95%

Clonality

Polyclonal

Isotype

IgG

Applications

Our [Abpromise guarantee](#) covers the use of **ab236954** in the following tested applications.

The application notes include recommended starting dilutions; optimal dilutions/concentrations should be determined by the end user.

Application	Abreviews	Notes
WB		1/500 - 1/5000.
ICC/IF		1/200 - 1/500.

Target

Function

Involved in the biogenesis of the 60S ribosomal subunit. Required for maturation of the 28S rRNA. Functions as a component of the Five Friends of Methylated CHTOP (5FMC) complex; the 5FMC complex is recruited to ZNF148 by methylated CHTOP, leading to desumoylation of ZNF148 and subsequent transactivation of ZNF148 target genes.

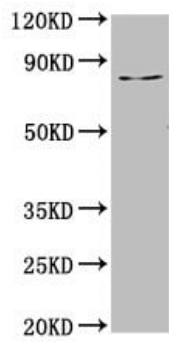
Sequence similarities

Belongs to the LAS1 family.

Cellular localization

Nucleus > nucleolus. Nucleus > nucleoplasm. Cytoplasm. Mainly found in the nucleoplasm, with low levels detected in the cytoplasmic and chromatin fractions (By similarity). Localizes mainly to the granular component, the region implicated in the later steps of rRNA processing and subunit assembly and export.

Images

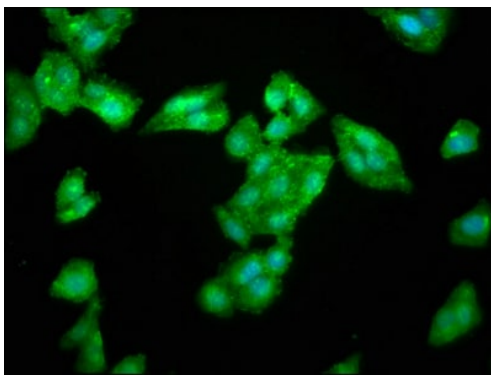


Western blot - Anti-LAS1L antibody (ab236954)

Anti-LAS1L antibody (ab236954) at 1/500 dilution + HEK-293
(Human epithelial cell line from embryonic kidney) whole cell lysate

Secondary

Goat polyclonal to rabbit IgG at 1/50000 dilution



Immunocytochemistry/ Immunofluorescence - Anti-LAS1L antibody (ab236954)

HepG2 (Human liver hepatocellular carcinoma cell line) cells stained for LAS1L (green) using ab236954 at 1/266 dilution in ICC/IF, followed by an Alexa-Fluor[®]488-conjugated goat anti-rabbit IgG (H+L). Counterstained with DAPI (blue).

The cells were fixed in 4% formaldehyde, permeabilized using 0.2% Triton X-100 and blocked in 10% normal goat serum. The cells were then incubated with primary antibody overnight at 4°C.

Please note: All products are "FOR RESEARCH USE ONLY. NOT FOR USE IN DIAGNOSTIC PROCEDURES"

Our Abpromise to you: Quality guaranteed and expert technical support

- Replacement or refund for products not performing as stated on the datasheet
- Valid for 12 months from date of delivery
- Response to your inquiry within 24 hours
- We provide support in Chinese, English, French, German, Japanese and Spanish
- Extensive multi-media technical resources to help you
- We investigate all quality concerns to ensure our products perform to the highest standards

If the product does not perform as described on this datasheet, we will offer a refund or replacement. For full details of the Abpromise, please visit <https://www.abcam.com/abpromise> or contact our technical team.

Terms and conditions

- Guarantee only valid for products bought direct from Abcam or one of our authorized distributors