

Product datasheet

Anti-LEF1 antibody ab217378

1 References 4 Images

Overview

Product name	Anti-LEF1 antibody
Description	Rabbit polyclonal to LEF1
Host species	Rabbit
Tested applications	Suitable for: WB, IHC-P
Species reactivity	Reacts with: Mouse, Rat, Human
Immunogen	Synthetic peptide within Human LEF1 aa 350-399 conjugated to keyhole limpet haemocyanin. The exact sequence is proprietary. Sequence: ELARKERQLHM QLYPGWSARD NYGKKKKRKR EKLQESASGT GPRMTAAI Database link: Q9UJU2 Run BLAST with Run BLAST with
Positive control	Mouse lymph node and human colon carcinoma lysates; rat liver tissue and human colon carcinoma tissue.

Properties

Form	Liquid
Storage instructions	Shipped at 4°C. Store at +4°C short term (1-2 weeks). Upon delivery aliquot. Store at -20°C long term. Avoid freeze / thaw cycle.
Storage buffer	Preservative: 0.09% Sodium azide Constituents: 50% Glycerol, 1% BSA
Purity	Protein A purified
Clonality	Polyclonal
Isotype	IgG

Applications

Our [Abpromise guarantee](#) covers the use of **ab217378** in the following tested applications.

The application notes include recommended starting dilutions; optimal dilutions/concentrations should be determined by the end user.

Application	Abreviews	Notes
WB		1/100 - 1/1000. Predicted molecular weight: 44 kDa.
IHC-P		1/100 - 1/500.

Target

Function

Participates in the Wnt signaling pathway. Activates transcription of target genes in the presence of CTNNB1 and EP300. May play a role in hair cell differentiation and follicle morphogenesis. TLE1, TLE2, TLE3 and TLE4 repress transactivation mediated by LEF1 and CTNNB1. Regulates T-cell receptor alpha enhancer function. Binds DNA in a sequence-specific manner. PIAG antagonizes both Wnt-dependent and Wnt-independent activation by LEF1 (By similarity). Isoform 3 lacks the CTNNB1 interaction domain and may be an antagonist for Wnt signaling. Isoform 5 transcriptionally activates the fibronectin promoter, binds to and represses transcription from the E-cadherin promoter in a CTNNB1-independent manner, and is involved in reducing cellular aggregation and increasing cell migration of pancreatic cancer cells. Isoform 1 transcriptionally activates MYC and CCND1 expression and enhances proliferation of pancreatic tumor cells.

Tissue specificity

Detected in thymus. Not detected in normal colon, but highly expressed in colon cancer biopsies and colon cancer cell lines. Expressed in several pancreatic tumors and weakly expressed in normal pancreatic tissue. Isoforms 1 and 5 are detected in several pancreatic cell lines.

Sequence similarities

Belongs to the TCF/LEF family.
Contains 1 HMG box DNA-binding domain.

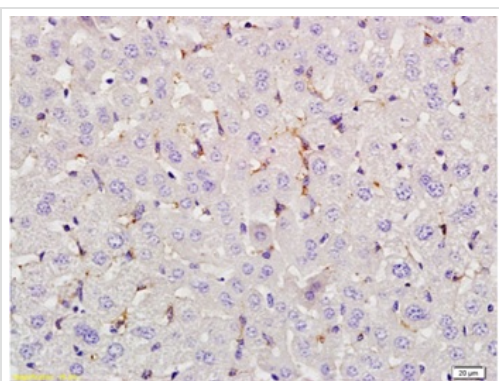
Domain

Proline-rich and acidic regions are implicated in the activation functions of RNA polymerase II transcription factors.

Cellular localization

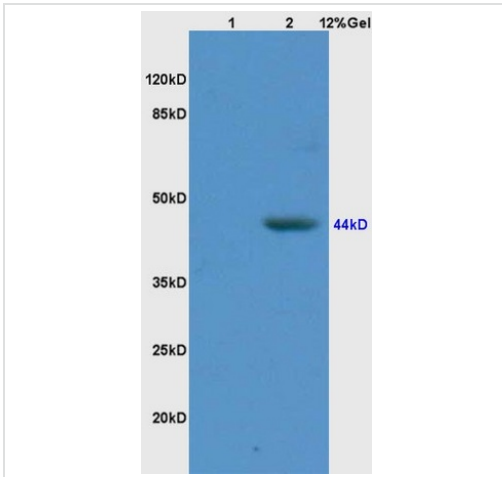
Nucleus. Found in nuclear bodies upon PIASG binding.

Images



Immunohistochemical analysis of formalin-fixed and paraffin-embedded rat liver tissue labeling LEF1 with ab217378 at 1/200 dilution followed by secondary detection and DAB staining.

Immunohistochemistry (Formalin/PFA-fixed paraffin-embedded sections) - Anti-LEF1 antibody (ab217378)



Western blot - Anti-LEF1 antibody (ab217378)

All lanes : Anti-LEF1 antibody (ab217378) at 1/200 dilution

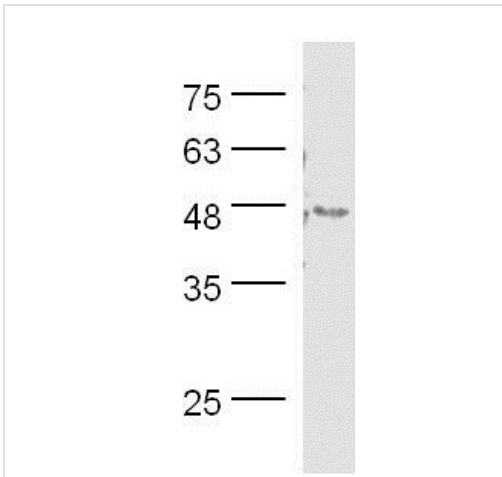
Lane 1 : rat brain lysate

Lane 2 : human colon carcinoma lysate

Secondary

All lanes : Goat Anti-Rabbit IgG Antibody (H+L), HRP at 1/3000 dilution

Predicted band size: 44 kDa



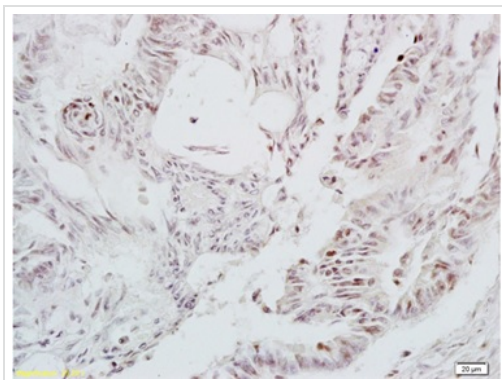
Western blot - Anti-LEF1 antibody (ab217378)

Anti-LEF1 antibody (ab217378) at 1/300 dilution + Mouse lymph node lysate

Secondary

Goat Anti-Rabbit IgG Antibody (H+L), HRP at 1/500 dilution

Predicted band size: 44 kDa



Immunohistochemistry (Formalin/PFA-fixed paraffin-embedded sections) - Anti-LEF1 antibody (ab217378)

Immunohistochemical analysis of formalin-fixed and paraffin-embedded human colon carcinoma tissue labeling LEF1 with ab217378 at 1/200 dilution followed by secondary detection and DAB staining.

Our Abpromise to you: Quality guaranteed and expert technical support

- Replacement or refund for products not performing as stated on the datasheet
- Valid for 12 months from date of delivery
- Response to your inquiry within 24 hours

- We provide support in Chinese, English, French, German, Japanese and Spanish
- Extensive multi-media technical resources to help you
- We investigate all quality concerns to ensure our products perform to the highest standards

If the product does not perform as described on this datasheet, we will offer a refund or replacement. For full details of the Abpromise, please visit <https://www.abcam.com/abpromise> or contact our technical team.

Terms and conditions

- Guarantee only valid for products bought direct from Abcam or one of our authorized distributors