

Product datasheet

Anti-LEO1/RDL antibody ab231296

1 Image

Overview

Product name	Anti-LEO1/RDL antibody
Description	Rabbit polyclonal to LEO1/RDL
Host species	Rabbit

Tested Applications & Species

Application	Species
WB	 Human

See all applications and species data 

Immunogen	Recombinant full length protein corresponding to Human LEO1/RDL. Database link: Q8WVC0
Positive control	WB: HeLa cell lysate.
General notes	This product was previously labelled as LEO1


Properties


Form	Liquid
Storage instructions	Shipped at 4°C. Store at +4°C short term (1-2 weeks). Upon delivery aliquot. Store at -20°C long term. Avoid freeze / thaw cycle.
Storage buffer	Preservatives: 0.05% Sodium azide, 0.05% Proclin 300 Constituent: PBS
Purity	Protein G purified
Clonality	Polyclonal
Isotype	IgG

Applications

The Abpromise guarantee Our [Abpromise guarantee](#) covers the use of **ab231296** in the following tested applications.

The application notes include recommended starting dilutions; optimal dilutions/concentrations should be determined by the end user.

 Guaranteed Tested applications are guaranteed to work and covered by our Abpromise guarantee.	 Predicted Predicted to work for this combination of applications and species but not guaranteed.	 Incompatible Does not work for this combination of applications and species.
--	--	--

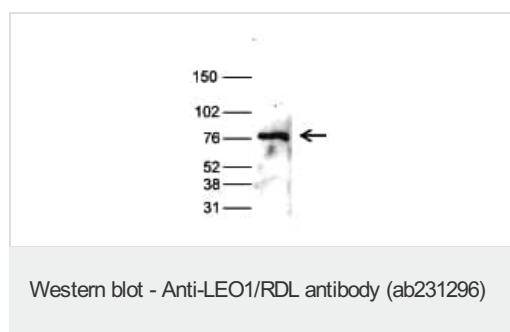
Application	Species
WB	 Human

Application	Abreviews	Notes
WB		1/1000. Predicted molecular weight: 75 kDa.

Target

Function	The PAF1 complex is a multifunctional complex. The PAF1 complex interacts with POLR2A. May be involved in both initiation and elongation, histone methylation and RNA processing. Overexpression of LEO1 induces cell growth arrest and premature senescence of fibroblasts.
Tissue specificity	Highly expressed in skeletal muscle and heart. Weakly expressed in placenta and liver.
Sequence similarities	Belongs to the LEO1 family.
Cellular localization	Nucleus.

Images



Anti-LEO1/RDL antibody (ab231296) at 1/1000 dilution + HeLa (Human epithelial cell line from cervix adenocarcinoma) cell lysate

Predicted band size: 75 kDa

Dilution buffer: TBS-Tween containing 5% skimmed milk.

Please note: All products are "FOR RESEARCH USE ONLY. NOT FOR USE IN DIAGNOSTIC PROCEDURES"

Our Abpromise to you: Quality guaranteed and expert technical support

- Replacement or refund for products not performing as stated on the datasheet
- Valid for 12 months from date of delivery
- Response to your inquiry within 24 hours
- We provide support in Chinese, English, French, German, Japanese and Spanish

- Extensive multi-media technical resources to help you
- We investigate all quality concerns to ensure our products perform to the highest standards

If the product does not perform as described on this datasheet, we will offer a refund or replacement. For full details of the Abpromise, please visit <https://www.abcam.com/abpromise> or contact our technical team.

Terms and conditions

- Guarantee only valid for products bought direct from Abcam or one of our authorized distributors