

Product datasheet

Anti-Leu Enkephalin antibody [NOC1] ab150346

★★★★★ 3 Abreviews 2 References 1 Image

Overview

Product name	Anti-Leu Enkephalin antibody [NOC1]
Description	Mouse monoclonal [NOC1] to Leu Enkephalin
Host species	Mouse
Specificity	This antibody does not distinguish between Met-enkephalin and Leu-enkephalin by radioimmunoassay or by immunocytochemistry.
Tested applications	Suitable for: IHC-P, IHC-Fr, RIA, ICC
Species reactivity	Reacts with: Mouse, Rat, Human
Immunogen	Synthetic peptide corresponding to Leu Enkephalin conjugated to bovine serum albumin. Sequence: Tyr-Gly-Gly-Phe-Leu

 [Run BLAST with](#)

 [Run BLAST with](#)

Properties

Form	Liquid
Storage instructions	Shipped at 4°C. Upon delivery aliquot and store at -20°C or -80°C. Avoid repeated freeze / thaw cycles.
Storage buffer	Contains no additives.
Purity	Tissue culture supernatant
Purification notes	ab150346 is in a protein-free culture medium.
Clonality	Monoclonal
Clone number	NOC1
Isotype	IgG1

Applications

Our [Abpromise guarantee](#) covers the use of **ab150346** in the following tested applications.

The application notes include recommended starting dilutions; optimal dilutions/concentrations should be determined by the end user.

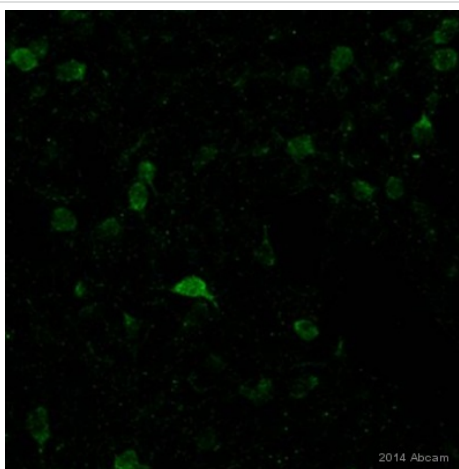
Application	Abreviews	Notes
IHC-P	★★★★☆	1/100.
IHC-Fr		Use at an assay dependent concentration.
RIA		Use at an assay dependent concentration.
ICC		1/200.

Target

Relevance Enkephalin and enkephalin-like peptides have been detected in many animal species. In mammals these opioid pentapeptides are cleaved from a common precursor molecule which is expressed in a number of cell types, including neurons and endocrine cells associated with the sympathetic nervous system where they are often co-stored with catecholamines. They are known to be endogenous ligands for Sopioid receptors and are known to mediate analgesia at the spinal level.

Cellular localization Secreted

Images



Paraformaldehyde-fixed, paraffin-embedded mouse brain tissue stained for Leu Enkephalin using ab150346 at 1/100 dilution in immunohistochemical analysis, followed by goat anti-mouse Alexa Fluor[®] 488.

Immunohistochemistry (Formalin/PFA-fixed paraffin-embedded sections) - Anti-Leu Enkephalin antibody [NOC1] (ab150346)

This image is courtesy of an anonymous Abreview.

Please note: All products are "FOR RESEARCH USE ONLY. NOT FOR USE IN DIAGNOSTIC PROCEDURES"

Our Abpromise to you: Quality guaranteed and expert technical support

- Replacement or refund for products not performing as stated on the datasheet

- Valid for 12 months from date of delivery
- Response to your inquiry within 24 hours

- We provide support in Chinese, English, French, German, Japanese and Spanish
- Extensive multi-media technical resources to help you
- We investigate all quality concerns to ensure our products perform to the highest standards

If the product does not perform as described on this datasheet, we will offer a refund or replacement. For full details of the Abpromise, please visit <https://www.abcam.com/abpromise> or contact our technical team.

Terms and conditions

- Guarantee only valid for products bought direct from Abcam or one of our authorized distributors