

## Product datasheet

# Anti-LexA DNA Binding Region antibody ab174384

1 References 1 Image

### Overview

---

<b>Product name</b>	Anti-LexA DNA Binding Region antibody
<b>Description</b>	Rabbit polyclonal to LexA DNA Binding Region
<b>Host species</b>	Rabbit
<b>Tested applications</b>	<b>Suitable for:</b> WB, IP, ChIP, ICC/IF
<b>Species reactivity</b>	<b>Reacts with:</b> Species independent
<b>Immunogen</b>	Recombinant full length protein corresponding to Escherichia coli LexA DNA Binding Region. Database link: <a href="#">POA7C2</a>
<b>Positive control</b>	E. coli whole cell lysate.
<b>General notes</b>	<p>Reproducibility is key to advancing scientific discovery and accelerating scientists' next breakthrough.</p> <p>Abcam is leading the way with our range of recombinant antibodies, knockout-validated antibodies and knockout cell lines, all of which support improved reproducibility.</p> <p>We are also planning to innovate the way in which we present recommended applications and species on our product datasheets, so that only applications &amp; species that have been tested in our own labs, our suppliers or by selected trusted collaborators are covered by our Abpromise™ guarantee.</p> <p>In preparation for this, we have started to update the applications &amp; species that this product is Abpromise guaranteed for.</p> <p>We are also updating the applications &amp; species that this product has been “predicted to work with,” however this information is not covered by our Abpromise guarantee.</p> <p>Applications &amp; species from publications and Abreviews that have not been tested in our own labs or in those of our suppliers are not covered by the Abpromise guarantee.</p> <p>Please check that this product meets your needs before purchasing. If you have any questions, special requirements or concerns, please send us an inquiry and/or contact our Support team ahead of purchase. Recommended alternatives for this product can be found below, as well as customer reviews and Q&amp;As.</p>

### Properties

---

<b>Form</b>	Liquid
<b>Storage instructions</b>	Shipped at 4°C. Store at +4°C short term (1-2 weeks). Upon delivery aliquot. Store at -20°C long

term. Avoid freeze / thaw cycle.

**Storage buffer**

pH: 6  
Preservative: 0.05% Sodium azide

**Purity**

Whole antiserum

**Clonality**

Polyclonal

**Isotype**

IgG

**Applications**

---

Our [Abpromise guarantee](#) covers the use of **ab174384** in the following tested applications.

The application notes include recommended starting dilutions; optimal dilutions/concentrations should be determined by the end user.

Application	Abreviews	Notes
WB		1/1000 - 1/3000. Predicted molecular weight: 22 kDa.
IP		Use at an assay dependent concentration.
ChIP		Use at an assay dependent concentration.
ICC/IF		Use at an assay dependent concentration.

**Target**

---

**Relevance**

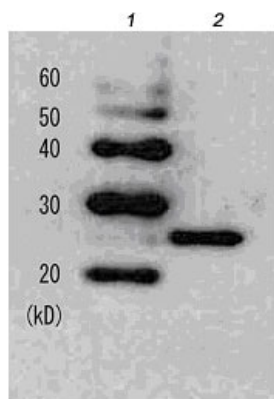
The LexA protein of Escherichia coli is a transcriptional repressor regulating approximately 20 genes, many of which are involved in DNA repair (SOS response). It binds with variable affinity to single, double, or even triple-operators via its amino-terminal domain that contains three alpha-helices spanning residues. This characteristic of LexA protein has been used to make efficient baits for two-hybrid studies.

**Cellular localization**

Nuclear

**Images**

---



Western blot - Anti-LexA DNA Binding Region antibody (ab174384)

**All lanes** : Anti-LexA DNA Binding Region antibody (ab174384) at 1/1000 dilution

**Lane 1** : Marker

**Lane 2** : E. coli whole cell lysate

**Predicted band size:** 22 kDa

**Please note:** All products are "FOR RESEARCH USE ONLY. NOT FOR USE IN DIAGNOSTIC PROCEDURES"

### Our Abpromise to you: Quality guaranteed and expert technical support

---

- Replacement or refund for products not performing as stated on the datasheet
- Valid for 12 months from date of delivery
- Response to your inquiry within 24 hours
- We provide support in Chinese, English, French, German, Japanese and Spanish
- Extensive multi-media technical resources to help you
- We investigate all quality concerns to ensure our products perform to the highest standards

If the product does not perform as described on this datasheet, we will offer a refund or replacement. For full details of the Abpromise, please visit <https://www.abcam.com/abpromise> or contact our technical team.

### Terms and conditions

---

- Guarantee only valid for products bought direct from Abcam or one of our authorized distributors