

## Product datasheet

# Anti-LexA DNA Binding Region antibody ab50953

5 References 1 Image

### Overview

---

<b>Product name</b>	Anti-LexA DNA Binding Region antibody
<b>Description</b>	Rabbit polyclonal to LexA DNA Binding Region
<b>Host species</b>	Rabbit
<b>Specificity</b>	This antibody recognizes E. coli LexA and LexA DBD-tagged fusion proteins.
<b>Tested applications</b>	<b>Suitable for:</b> WB, IP
<b>Species reactivity</b>	<b>Reacts with:</b> Species independent
<b>Immunogen</b>	Recombinant full length protein corresponding to Escherichia coli LexA DNA Binding Region.
<b>General notes</b>	<p>The Life Science industry has been in the grips of a reproducibility crisis for a number of years. Abcam is leading the way in addressing this with our range of recombinant monoclonal antibodies and knockout edited cell lines for gold-standard validation. Please check that this product meets your needs before purchasing.</p> <p>If you have any questions, special requirements or concerns, please send us an inquiry and/or contact our Support team ahead of purchase. Recommended alternatives for this product can be found below, along with publications, customer reviews and Q&amp;As</p>

### Properties

---

<b>Form</b>	Liquid
<b>Storage instructions</b>	Shipped at 4°C. Upon delivery aliquot and store at -20°C. Avoid freeze / thaw cycles.
<b>Storage buffer</b>	Preservative: 0.035% Sodium azide Constituents: Whole serum, 30% Glycerol
<b>Purity</b>	Whole antiserum
<b>Clonality</b>	Polyclonal
<b>Isotype</b>	IgG

### Applications

---

**The Abpromise guarantee** Our [Abpromise guarantee](#) covers the use of ab50953 in the following tested applications. The application notes include recommended starting dilutions; optimal dilutions/concentrations should be determined by the end user.

Application	Abreviews	Notes
WB		1/25000 - 1/100000. Detects a band of approximately 130 kDa (predicted molecular weight: 49 kDa). 1/25000 - 1/100000. Detects a band of approximately 130 kDa (predicted molecular weight: 49 kDa). This product has been tested by Western blotting using a LexA-Rb fusion and a LexA-PP2A, beta subunit fusion expressed in budding yeast. The observed molecular weight of a fusion protein will be increased by approximately 24
IP		Use at 1-0.2 µg/mg of lysate.

## Target

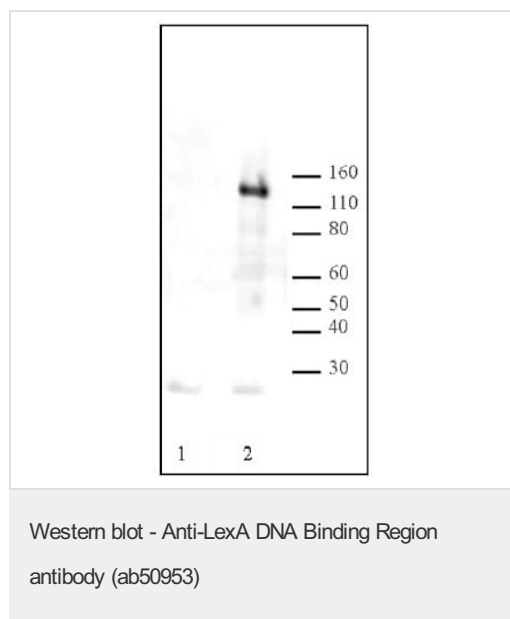
### Relevance

The LexA protein of Escherichia coli is a transcriptional repressor regulating approximately 20 genes, many of which are involved in DNA repair (SOS response). It binds with variable affinity to single, double, or even triple-operators via its amino-terminal domain that contains three alpha-helices spanning residues. This characteristic of LexA protein has been used to make efficient baits for two-hybrid studies.

### Cellular localization

Nuclear

## Images



**All lanes** : Anti-LexA DNA Binding Region antibody (ab50953) at 1/100000 dilution

**Lane 1** : Crude yeast protein extract without a LexA fusion protein

**Lane 2** : Crude yeast protein extract expressing a LexA-Retinoblastoma (Rb) fusion protein

Lysates/proteins at 20 µg per lane.

**Predicted band size:** 49 kDa

**Observed band size:** 130 kDa

**Please note:** All products are "FOR RESEARCH USE ONLY. NOT FOR USE IN DIAGNOSTIC PROCEDURES"

## Our Promise to you: Quality guaranteed and expert technical support

- Replacement or refund for products not performing as stated on the datasheet
- Valid for 12 months from date of delivery

- Response to your inquiry within 24 hours
- We provide support in Chinese, English, French, German, Japanese and Spanish
- Extensive multi-media technical resources to help you
- We investigate all quality concerns to ensure our products perform to the highest standards

If the product does not perform as described on this datasheet, we will offer a refund or replacement. For full details of the Abpromise, please visit <https://www.abcam.com/abpromise> or contact our technical team.

### **Terms and conditions**

---

- Guarantee only valid for products bought direct from Abcam or one of our authorized distributors