




Product datasheet

Anti-LGALS3BP antibody [OTI3D6] ab236509

7 Images

Overview

Product name	Anti-LGALS3BP antibody [OTI3D6]
Description	Mouse monoclonal [OTI3D6] to LGALS3BP
Host species	Mouse
Tested applications	Suitable for: IHC-P, WB, Flow Cyt, ICC/IF
Species reactivity	Reacts with: Human Predicted to work with: Orangutan 
Immunogen	Recombinant fragment corresponding to Human LGALS3BP aa 19-300. (NP_005558) produced in E.coli. Sequence: VNDGDMRLADGGATNQGRVEIFYRGQWGTVCDNLWDLT DASVVCRALGFE NATQALGRAAFGQGSGPIMLDEVQCTGTEASLADCKSLG WLKSNCRHERD AGVVCTNETRSTHTLDLSRESEALGQIFDSQRGCDLSIS VNVQGEDALG FCGHTVILTANLEAQLWKEPGSNVTMSVDAECVPMVRD LLRYFYSTRRID ITLSSVKCFHKLASAYGARQLQGYCASLFAILLPQDPSFQM PLDLYAYAV ATGDALLEKLCLQFLAWNFEALTQAEAWPSVP Database link: Q08380  Run BLAST with  Run BLAST with
Positive control	WB: HEK-293T transfected with r pCMV6-ENTRY LGALS3BP cDNA, whole cell lysate. IHC-P: Human lung carcinoma, endometrium adenocarcinoma, prostate and bladder carcinoma tissue. ICC/IF: COS-7 cells transiently transfected with pCMV6-ENTRY LGALS3BP cDNA. Flow: HEK-293T cells.
General notes	Clone OTI3D6 (formerly 3D6). Reproducibility is key to advancing scientific discovery and accelerating scientists' next breakthrough. Abcam is leading the way with our range of recombinant antibodies, knockout-validated antibodies and knockout cell lines, all of which support improved reproducibility. We are also planning to innovate the way in which we present recommended applications and

species on our product datasheets, so that only applications & species that have been tested in our own labs, our suppliers or by selected trusted collaborators are covered by our Abpromise™ guarantee.

In preparation for this, we have started to update the applications & species that this product is Abpromise guaranteed for.

We are also updating the applications & species that this product has been “predicted to work with,” however this information is not covered by our Abpromise guarantee.

Applications & species from publications and Abreviews that have not been tested in our own labs or in those of our suppliers are not covered by the Abpromise guarantee.

Please check that this product meets your needs before purchasing. If you have any questions, special requirements or concerns, please send us an inquiry and/or contact our Support team ahead of purchase. Recommended alternatives for this product can be found below, as well as customer reviews and Q&As.

Properties

Form	Liquid
Storage instructions	Shipped at 4°C. Store at +4°C short term (1-2 weeks). Upon delivery aliquot. Store at -20°C long term. Avoid freeze / thaw cycle.
Storage buffer	pH: 7.30 Preservative: 0.02% Sodium azide Constituents: PBS, 1% BSA, 50% Glycerol
Purity	Affinity purified
Purification notes	Purified from cell culture supernatant.
Clonality	Monoclonal
Clone number	OTI3D6
Isotype	IgG2a

Applications

Our [Abpromise guarantee](#) covers the use of **ab236509** in the following tested applications.

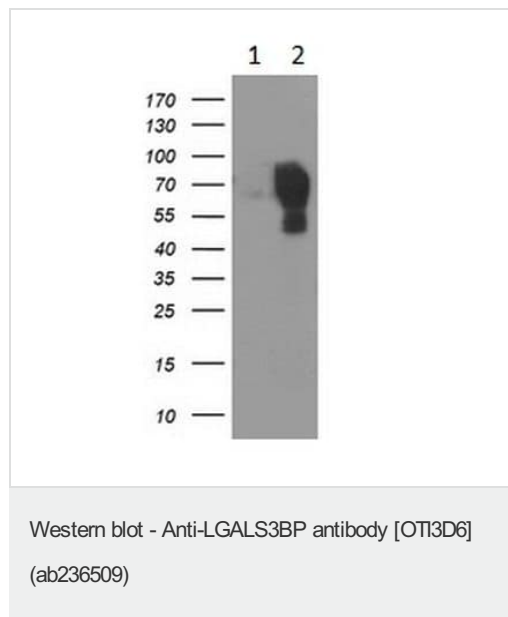
The application notes include recommended starting dilutions; optimal dilutions/concentrations should be determined by the end user.

Application	Abreviews	Notes
IHC-P		1/150. Heat induced epitope retrieval by 10mM citric buffer, pH 6.0, 100°C for 10 minutes.
WB		1/500 - 1/2000. Predicted molecular weight: 65 kDa.
Flow Cyt		1/100.
ICC/IF		1/100.

Target

Function	Promotes integrin-mediated cell adhesion. May stimulate host defense against viruses and tumor cells.
Tissue specificity	Ubiquitous. Detected in body fluids such as semen, milk, serum, tears, saliva and urine. Expressed by keratinocytes and fibroblasts.
Sequence similarities	Contains 1 BACK (BTB/Kelch associated) domain. Contains 1 BTB (POZ) domain. Contains 1 SRCR domain.
Cellular localization	Secreted. Secreted > extracellular space > extracellular matrix.

Images



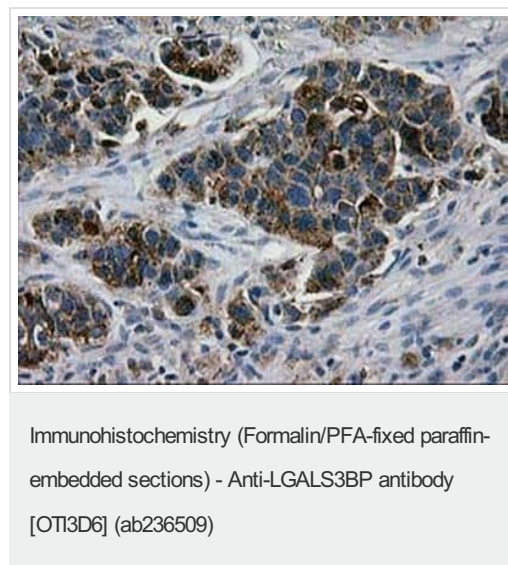
All lanes : Anti-LGALS3BP antibody [OTI3D6] (ab236509) at 1/500 dilution

Lane 1 : HEK-293T (Human epithelial cell line from embryonic kidney transformed with large T antigen) transfected with pCMV6-ENTRY control cDNA, whole cell lysate

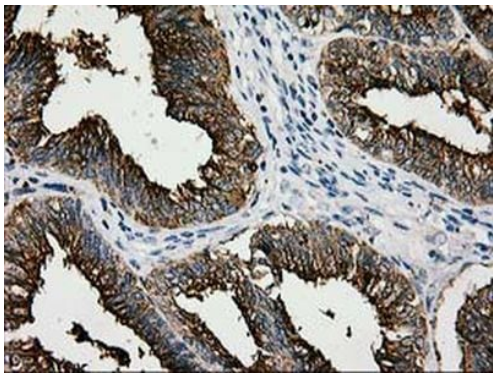
Lane 2 : HEK-293T (Human epithelial cell line from embryonic kidney transformed with large T antigen) transfected with pCMV6-ENTRY LGALS3BP cDNA, whole cell lysate

Lysates/proteins at 5 µg per lane.

Predicted band size: 65 kDa

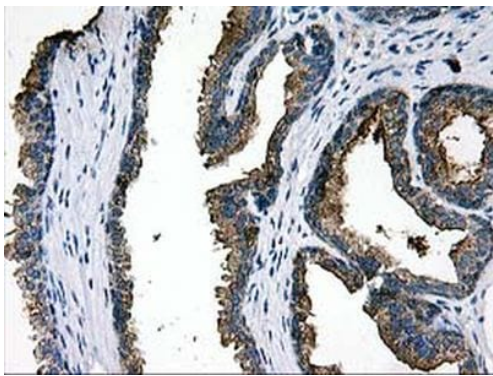


Paraffin-embedded human lung carcinoma tissue stained for LGALS3BP using ab236509 at 1/150 dilution in immunohistochemical analysis.



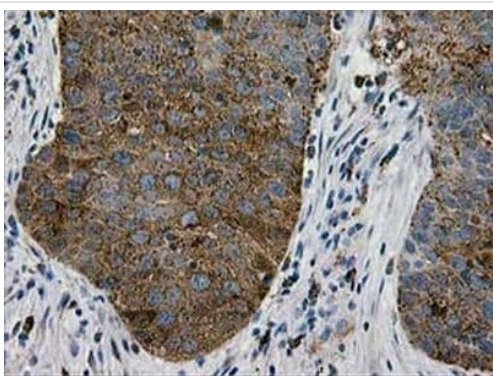
Immunohistochemistry (Formalin/PFA-fixed paraffin-embedded sections) - Anti-LGALS3BP antibody [OTI3D6] (ab236509)

Paraffin-embedded human endometrium adenocarcinoma tissue stained for LGALS3BP using ab236509 at 1/150 dilution in immunohistochemical analysis.



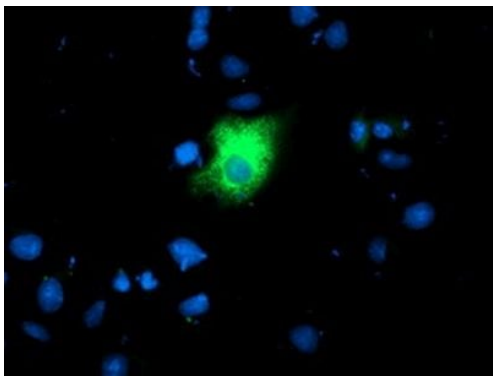
Immunohistochemistry (Formalin/PFA-fixed paraffin-embedded sections) - Anti-LGALS3BP antibody [OTI3D6] (ab236509)

Paraffin-embedded human prostate tissue stained for LGALS3BP using ab236509 at 1/150 dilution in immunohistochemical analysis.



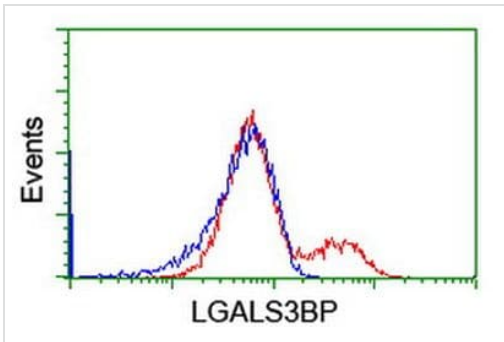
Immunohistochemistry (Formalin/PFA-fixed paraffin-embedded sections) - Anti-LGALS3BP antibody [OTI3D6] (ab236509)

Paraffin-embedded human bladder carcinoma tissue stained for LGALS3BP using ab236509 at 1/150 dilution in immunohistochemical analysis.



Immunocytochemistry/ Immunofluorescence - Anti-LGALS3BP antibody [OTI3D6] (ab236509)

COS-7 (African green monkey kidney fibroblast-like cell line) cells transfected with pCMV6-ENTRY LGALS3BP cDNA stained for LGALS3BP (green) using ab236509 at 1/100 dilution in ICC/IF.



Flow Cytometry - Anti-LGALS3BP antibody [OTI3D6] (ab236509)

Flow cytometric analysis of HEK-293T (Human epithelial cell line from embryonic kidney transformed with large T antigen) cells transfected with empty vector control (blue) or vector expressing LGALS3BP (red), labeling LGALS3BP with ab236509 at 1/100 dilution.

Please note: All products are "FOR RESEARCH USE ONLY. NOT FOR USE IN DIAGNOSTIC PROCEDURES"

Our Abpromise to you: Quality guaranteed and expert technical support

- Replacement or refund for products not performing as stated on the datasheet
- Valid for 12 months from date of delivery
- Response to your inquiry within 24 hours
- We provide support in Chinese, English, French, German, Japanese and Spanish
- Extensive multi-media technical resources to help you
- We investigate all quality concerns to ensure our products perform to the highest standards

If the product does not perform as described on this datasheet, we will offer a refund or replacement. For full details of the Abpromise, please visit <https://www.abcam.com/abpromise> or contact our technical team.

Terms and conditions

- Guarantee only valid for products bought direct from Abcam or one of our authorized distributors