




Product datasheet

Anti-Lhx4 antibody ab220758

1 Image

Overview

<b>Product name</b>	Anti-Lhx4 antibody
<b>Description</b>	Rabbit polyclonal to Lhx4
<b>Host species</b>	Rabbit
<b>Tested applications</b>	<b>Suitable for:</b> ICC/IF
<b>Species reactivity</b>	<b>Reacts with:</b> Human <b>Predicted to work with:</b> Mouse 
<b>Immunogen</b>	Recombinant fragment corresponding to Human Lhx4 aa 226-290. Sequence: QFYKSVKRSRGSSKQEKESSAEDCGVSDSELSFRED QILSELGHTNRIYG NVGDVTGGQLMNGSF  Database link: <a href="#">Q969G2</a>   <a href="#">Run BLAST with</a>  <a href="#">Run BLAST with</a>
<b>Positive control</b>	U-2 OS cells.

Properties

<b>Form</b>	Liquid
<b>Storage instructions</b>	Shipped at 4°C. Store at +4°C short term (1-2 weeks). Upon delivery aliquot. Store at -20°C long term. Avoid freeze / thaw cycle.
<b>Storage buffer</b>	pH: 7.2 Preservative: 0.02% Sodium azide Constituents: 40% Glycerol, 59% PBS
<b>Purity</b>	Immunogen affinity purified
<b>Clonality</b>	Polyclonal
<b>Isotype</b>	IgG

Applications

Our [Abpromise guarantee](#) covers the use of **ab220758** in the following tested applications.

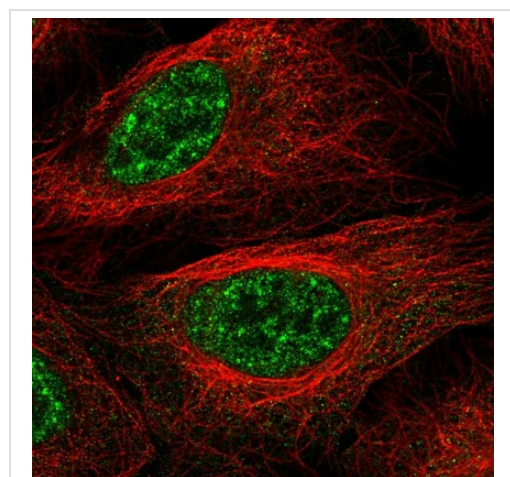
The application notes include recommended starting dilutions; optimal dilutions/concentrations should be determined by the end user.

Application	Abreviews	Notes
ICC/IF		Use a concentration of 1 - 4 µg/ml. Fixation/Permeabilization: PFA/Triton X-100

## Target

<b>Function</b>	May play a critical role in the development of respiratory control mechanisms and in the normal growth and maturation of the lung.
<b>Involvement in disease</b>	Defects in LHX4 are the cause of pituitary hormone deficiency combined type 4 (CPHD4) [MIM:262700]; also known as short stature pituitary and cerebellar defects and small sella turcica. The disorder is characterized by short stature, pituitary and cerebellar defects, and small transverse depression crossing the midline on the superior surface of the body of the sphenoid bone which houses the pituitary gland. Note=A chromosomal aberration involving LHX4 may be a cause of acute lymphoblastic leukemia. Translocation t(1;14)(q25;q32) with IGHG1.
<b>Sequence similarities</b>	Contains 1 homeobox DNA-binding domain. Contains 2 LIM zinc-binding domains.
<b>Cellular localization</b>	Nucleus.

## Images



Immunofluorescent analysis of paraformaldehyde-fixed, Triton X-100 permeabilized U-2 OS cells labeling Lhx4 with ab220758 at 4 µg/ml dilution (green).

Immunocytochemistry/ Immunofluorescence - Anti-Lhx4 antibody (ab220758)

**Please note:** All products are "FOR RESEARCH USE ONLY. NOT FOR USE IN DIAGNOSTIC PROCEDURES"

## Our Abpromise to you: Quality guaranteed and expert technical support

- Replacement or refund for products not performing as stated on the datasheet

- Valid for 12 months from date of delivery
- Response to your inquiry within 24 hours
- We provide support in Chinese, English, French, German, Japanese and Spanish
- Extensive multi-media technical resources to help you
- We investigate all quality concerns to ensure our products perform to the highest standards

If the product does not perform as described on this datasheet, we will offer a refund or replacement. For full details of the Abpromise, please visit <https://www.abcam.com/abpromise> or contact our technical team.

### **Terms and conditions**

---

- Guarantee only valid for products bought direct from Abcam or one of our authorized distributors