


Product datasheet

Anti-LIF antibody ab223663

1 Image

Overview

| | |
|----------------------------|---|
| Product name | Anti-LIF antibody |
| Description | Goat polyclonal to LIF |
| Host species | Goat |
| Tested applications | Suitable for: WB |
| Species reactivity | Reacts with: Mouse Predicted to work with: Rat, Cow, Human, Mink  |
| Immunogen | Synthetic peptide corresponding to Human LIF aa 28-39. Sequence: TPVNATCAIRHP Database link: P15018 Run BLAST with Run BLAST with |
| Positive control | WB: Mouse colon lysate. |

Properties

| | |
|-----------------------------|---|
| Form | Liquid |
| Storage instructions | Shipped at 4°C. Store at +4°C short term (1-2 weeks). Upon delivery aliquot. Store at -20°C long term. Avoid freeze / thaw cycle. |
| Storage buffer | pH: 7.30 Preservative: 0.02% Sodium azide Constituents: 0.5% BSA, Tris buffered saline |
| Purity | Immunogen affinity purified |
| Purification notes | Purified from goat serum by ammonium sulphate precipitation followed by antigen affinity chromatography using the immunizing peptide. |
| Clonality | Polyclonal |
| Isotype | IgG |

Applications

Our [Abpromise guarantee](#) covers the use of **ab223663** in the following tested applications.

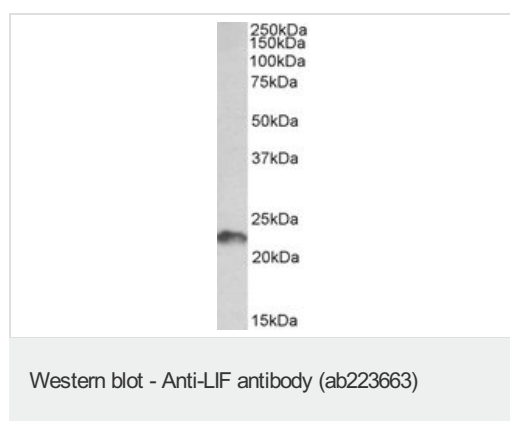
The application notes include recommended starting dilutions; optimal dilutions/concentrations should be determined by the end user.

| Application | Abreviews | Notes |
|-------------|-----------|--|
| WB | | Use a concentration of 0.5 - 1.5 µg/ml. Detects a band of approximately 23 kDa (predicted molecular weight: 22.3 kDa). |

Target

| | |
|------------------------------|---|
| Function | LIF has the capacity to induce terminal differentiation in leukemic cells. Its activities include the induction of hematopoietic differentiation in normal and myeloid leukemia cells, the induction of neuronal cell differentiation, and the stimulation of acute-phase protein synthesis in hepatocytes. |
| Sequence similarities | Belongs to the LIF/OSM family. |
| Cellular localization | Secreted. |

Images



Anti-LIF antibody (ab223663) at 0.5 µg/ml + Mouse colon lysate at 35 µg

Developed using the ECL technique.

Predicted band size: 22.3 kDa

Observed band size: 23 kDa

[why is the actual band size different from the predicted?](#)

Primary incubation was 1 hour

Please note: All products are "FOR RESEARCH USE ONLY. NOT FOR USE IN DIAGNOSTIC PROCEDURES"

Our Abpromise to you: Quality guaranteed and expert technical support

- Replacement or refund for products not performing as stated on the datasheet
- Valid for 12 months from date of delivery
- Response to your inquiry within 24 hours
- We provide support in Chinese, English, French, German, Japanese and Spanish
- Extensive multi-media technical resources to help you
- We investigate all quality concerns to ensure our products perform to the highest standards

If the product does not perform as described on this datasheet, we will offer a refund or replacement. For full details of the Abpromise,

please visit <https://www.abcam.com/abpromise> or contact our technical team.

Terms and conditions

- Guarantee only valid for products bought direct from Abcam or one of our authorized distributors