


Product datasheet

Anti-LIFR antibody ab101228

★★★★★ 1 Abreviews 5 References 2 Images

Overview

Product name	Anti-LIFR antibody
Description	Rabbit polyclonal to LIFR
Host species	Rabbit
Tested applications	Suitable for: IHC-P, WB
Species reactivity	<p>Reacts with: Mouse</p> <p>Predicted to work with: Rat, Horse, Human, Pig, Chimpanzee, Macaque monkey, Orangutan</p> <p></p>
Immunogen	<p>Synthetic peptide corresponding to Mouse LIFR aa 500-600 conjugated to keyhole limpet haemocyanin.</p> <p>(Peptide available as ab130816)</p>
Positive control	This antibody gave a positive signal in Mouse Placenta tissue lysate and in mouse placenta FFPE tissue sections.
General notes	<p>Reproducibility is key to advancing scientific discovery and accelerating scientists' next breakthrough.</p> <p>Abcam is leading the way with our range of recombinant antibodies, knockout-validated antibodies and knockout cell lines, all of which support improved reproducibility.</p> <p>We are also planning to innovate the way in which we present recommended applications and species on our product datasheets, so that only applications & species that have been tested in our own labs, our suppliers or by selected trusted collaborators are covered by our Abpromise™ guarantee.</p> <p>In preparation for this, we have started to update the applications & species that this product is Abpromise guaranteed for.</p> <p>We are also updating the applications & species that this product has been “predicted to work with,” however this information is not covered by our Abpromise guarantee.</p> <p>Applications & species from publications and Abreviews that have not been tested in our own labs or in those of our suppliers are not covered by the Abpromise guarantee.</p> <p>Please check that this product meets your needs before purchasing. If you have any questions, special requirements or concerns, please send us an inquiry and/or contact our Support team ahead of purchase. Recommended alternatives for this product can be found below, as well as customer reviews and Q&As.</p>

Properties

Form	Liquid
Storage instructions	Shipped at 4°C. Store at +4°C short term (1-2 weeks). Upon delivery aliquot. Store at -20°C or -80°C. Avoid freeze / thaw cycle.
Storage buffer	pH: 7.40 Preservative: 0.02% Sodium azide Constituent: PBS Batches of this product that have a concentration < 1mg/ml may have BSA added as a stabilising agent. If you would like information about the formulation of a specific lot, please contact our scientific support team who will be happy to help.
Purity	Immunogen affinity purified
Clonality	Polyclonal
Isotype	IgG

Applications

Our [Abpromise guarantee](#) covers the use of **ab101228** in the following tested applications.

The application notes include recommended starting dilutions; optimal dilutions/concentrations should be determined by the end user.

Application	Abreviews	Notes
IHC-P	★★★★☆	Use a concentration of 1 µg/ml. Perform heat mediated antigen retrieval before commencing with IHC staining protocol.
WB		Use a concentration of 1 µg/ml. Detects a band of approximately 122 kDa (predicted molecular weight: 122 kDa).

Target

Function	Signal-transducing molecule. May have a common pathway with IL6ST. The soluble form inhibits the biological activity of LIF by blocking its binding to receptors on target cells.
Involvement in disease	Defects in LIFR are the cause of Stueve-Wiedemann syndrome (SWS) [MIM:601559]; also known as Schwartz-Jampel syndrome type 2 (SJS2). SWS is a severe autosomal recessive condition and belongs to the group of the bent-bone dysplasias. SWS is characterized by bowing of the lower limbs, with internal cortical thickening, wide metaphyses with abnormal trabecular pattern, and camptodactyly. Additional features include feeding and swallowing difficulties, as well as respiratory distress and hyperthermic episodes, which cause death in the first months of life. The rare survivors develop progressive scoliosis, spontaneous fractures, bowing of the lower limbs, with prominent joints and dysautonomia symptoms, including temperature instability, absent corneal and patellar reflexes, and smooth tongue. Note=A chromosomal aberration involving LIFR is found in salivary gland pleiomorphic adenomas, the most common benign epithelial tumors of the salivary gland. Translocation t(5;8)(p13;q12) with PLAG1.
Sequence similarities	Belongs to the type I cytokine receptor family. Type 2 subfamily. Contains 6 fibronectin type-III domains.

Domain

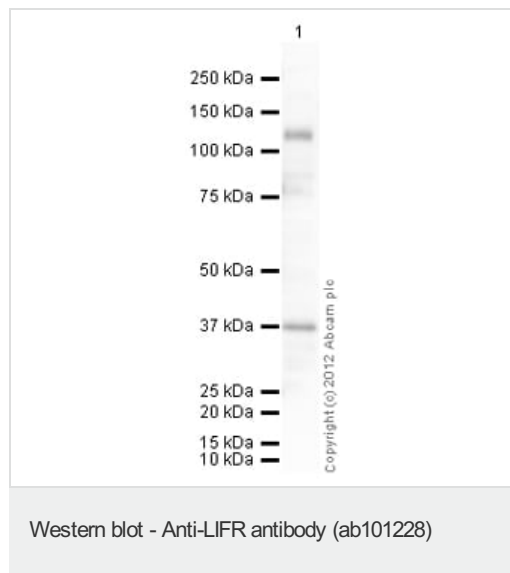
The WSXWS motif appears to be necessary for proper protein folding and thereby efficient intracellular transport and cell-surface receptor binding.

The box 1 motif is required for JAK interaction and/or activation.

Cellular localization

Secreted and Cell membrane.

Images



Anti-LIFR antibody (ab101228) at 1 µg/ml + Mouse Placenta Tissue Lysate at 10 µg

Secondary

Goat Anti-Rabbit IgG H&L (HRP) preadsorbed (ab97080) at 1/5000 dilution

Developed using the ECL technique.

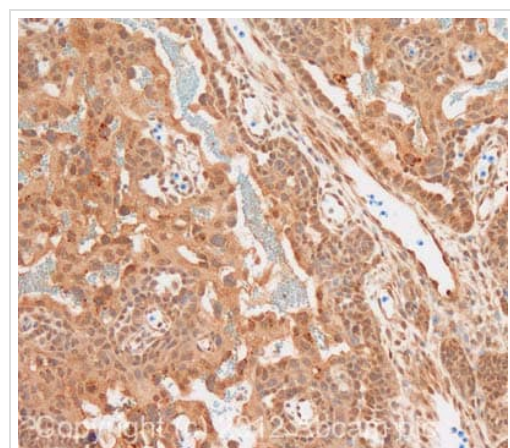
Performed under reducing conditions.

Predicted band size: 122 kDa

Observed band size: 122 kDa

Additional bands at: 37 kDa. We are unsure as to the identity of these extra bands.

Exposure time: 90 seconds



Immunohistochemistry (Formalin/PFA-fixed paraffin-embedded sections) - Anti-LIFR antibody (ab101228)

IHC image of LIFR staining in mouse placenta formalin fixed paraffin embedded tissue section, performed on a Leica Bond™ system using the standard protocol B. The section was pre-treated using heat mediated antigen retrieval with sodium citrate buffer (pH6, epitope retrieval solution 1) for 20 mins. The section was then incubated with ab101228, 1µg/ml, for 15 mins at room temperature. A goat anti-rabbit biotinylated secondary antibody was used to detect the primary, and visualized using an HRP conjugated ABC system. DAB was used as the chromogen. The section was then counterstained with haematoxylin and mounted with DPX.

For other IHC staining systems (automated and non-automated) customers should optimize variable parameters such as antigen retrieval conditions, primary antibody concentration and antibody incubation times.

Please note: All products are "FOR RESEARCH USE ONLY. NOT FOR USE IN DIAGNOSTIC PROCEDURES"

Our Abpromise to you: Quality guaranteed and expert technical support

- Replacement or refund for products not performing as stated on the datasheet
- Valid for 12 months from date of delivery
- Response to your inquiry within 24 hours

- We provide support in Chinese, English, French, German, Japanese and Spanish
- Extensive multi-media technical resources to help you
- We investigate all quality concerns to ensure our products perform to the highest standards

If the product does not perform as described on this datasheet, we will offer a refund or replacement. For full details of the Abpromise, please visit <https://www.abcam.com/abpromise> or contact our technical team.

Terms and conditions

- Guarantee only valid for products bought direct from Abcam or one of our authorized distributors