


## Product datasheet

# Anti-LIP1 antibody ab90573

★★★★★ 2 Abreviews 2 Images

### Overview

<b>Product name</b>	Anti-LIP1 antibody
<b>Description</b>	Rabbit polyclonal to LIP1
<b>Host species</b>	Rabbit
<b>Tested applications</b>	<b>Suitable for:</b> WB, IP
<b>Species reactivity</b>	<b>Reacts with:</b> Human <b>Predicted to work with:</b> Chimpanzee, Baboon, Rhesus monkey, Gorilla, Orangutan 
<b>Immunogen</b>	Synthetic peptide corresponding to Human LIP1 aa 900-950 (internal sequence). Database link: <a href="#">NP_443134.2</a>
<b>Positive control</b>	HeLa whole cell lysate ( <a href="#">ab150035</a> )
<b>General notes</b>	This product was previously labelled as STK11IP

### Properties

<b>Form</b>	Liquid
<b>Storage instructions</b>	Shipped at 4°C. Upon delivery aliquot and store at -20°C. Avoid freeze / thaw cycles.
<b>Storage buffer</b>	Preservative: 0.09% Sodium azide Constituent: Tris citrate/phosphate
<b>Purity</b>	Immunogen affinity purified
<b>Clonality</b>	Polyclonal
<b>Isotype</b>	IgG

### Applications

Our [Abpromise guarantee](#) covers the use of **ab90573** in the following tested applications.

The application notes include recommended starting dilutions; optimal dilutions/concentrations should be determined by the end user.

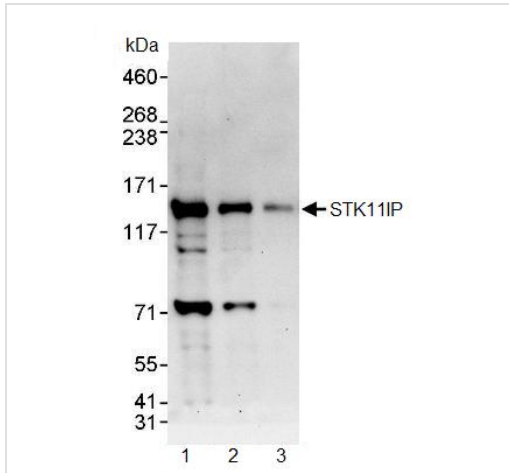
Application	Abreviews	Notes
WB	★★★★★	1/2000 - 1/10000. Predicted molecular weight: 121 kDa.

Application	Abreviews	Notes
IP	★★★★★	Use at 2-5 µg/mg of lysate.

**Target**

<b>Function</b>	May regulate STK11 function by controlling its subcellular localization.
<b>Sequence similarities</b>	Belongs to the STK11IP family. Contains 8 LRR (leucine-rich) repeats.
<b>Cellular localization</b>	Cytoplasm. Some cells show granular or punctuate expression. Colocalizes with STK11 and SMAD4 in granular or punctuate structures.

**Images**



Western blot - Anti-LIP1 antibody (ab90573)

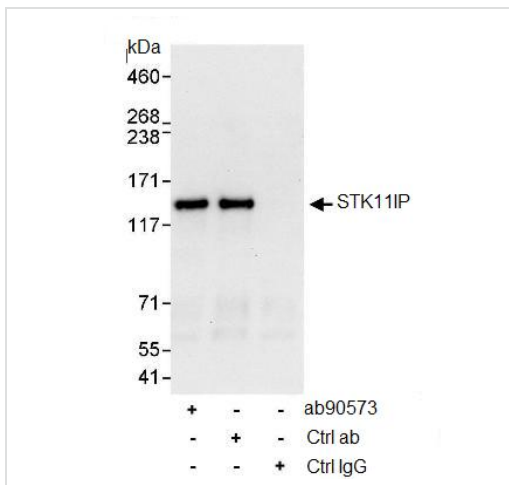
**All lanes :** Anti-LIP1 antibody (ab90573) at 0.4 µg/ml

- Lane 1 :** HeLa whole cell lysate at 50 µg
- Lane 2 :** HeLa whole cell lysate at 15 µg
- Lane 3 :** HeLa whole cell lysate at 5 µg

Developed using the ECL technique.

**Predicted band size:** 121 kDa

**Exposure time:** 30 seconds



Immunoprecipitation - Anti-LIP1 antibody (ab90573)

ab90573 at 1 µg/ml detecting LIP1 following immunoprecipitation.

- Lane 1; IP using ab90573
- Lane 2; IP using an antibody to an upstream epitope of LIP1
- Lane 3; IP using control IgG

All antibodies used at 3 µg/mg lysate. 1 mg of lysate precipitated and 20% loaded.

Developed using the ECL technique with a 30 second exposure.

**Please note:** All products are "FOR RESEARCH USE ONLY. NOT FOR USE IN DIAGNOSTIC PROCEDURES"

### **Our Abpromise to you: Quality guaranteed and expert technical support**

---

- Replacement or refund for products not performing as stated on the datasheet
- Valid for 12 months from date of delivery
- Response to your inquiry within 24 hours
  
- We provide support in Chinese, English, French, German, Japanese and Spanish
- Extensive multi-media technical resources to help you
- We investigate all quality concerns to ensure our products perform to the highest standards

If the product does not perform as described on this datasheet, we will offer a refund or replacement. For full details of the Abpromise, please visit <https://www.abcam.com/abpromise> or contact our technical team.

### **Terms and conditions**

---

- Guarantee only valid for products bought direct from Abcam or one of our authorized distributors