

## Product datasheet

# Anti-LIPG antibody ab24447

★☆☆☆☆ 1 Abreviews 1 References 2 Images

### Overview

<b>Product name</b>	Anti-LIPG antibody
<b>Description</b>	Rabbit polyclonal to LIPG
<b>Host species</b>	Rabbit
<b>Specificity</b>	ab24447 reacts with Endothelial lipase.
<b>Tested applications</b>	<b>Suitable for:</b> IHC-P, ICC/IF, WB
<b>Species reactivity</b>	<b>Reacts with:</b> Mouse, Rat, Sheep, Human, Pig
<b>Immunogen</b>	Synthetic peptide surrounding amino acid 22 of human Endothelial Lipase. (Peptide available as <a href="#">ab53323</a> .)
<b>Positive control</b>	HepG2 whole cell lysate ( <a href="#">ab7900</a> )

### Properties

<b>Form</b>	Liquid
<b>Storage instructions</b>	Shipped at 4°C. Upon delivery aliquot and store at -20°C. Avoid freeze / thaw cycles.
<b>Storage buffer</b>	Preservative: 0.02% Sodium Azide Constituents: 50% Glycerol, 1% BSA, PBS, pH 7.2
<b>Purity</b>	Immunogen affinity purified
<b>Clonality</b>	Polyclonal
<b>Isotype</b>	IgG

### Applications

Our [Abpromise guarantee](#) covers the use of **ab24447** in the following tested applications.

The application notes include recommended starting dilutions; optimal dilutions/concentrations should be determined by the end user.

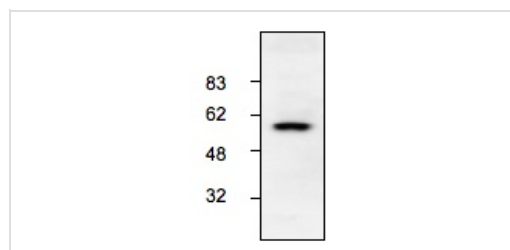
Application	Abreviews	Notes
IHC-P		Use a concentration of 5 - 20 µg/ml.
ICC/IF	★☆☆☆☆	Use a concentration of 5 µg/ml.

Application	Abreviews	Notes
WB		Use a concentration of 1 - 4 µg/ml. Detects a band of approximately 57 kDa. Can be blocked with <a href="#">LIPG peptide (ab53323)</a> .

## Target

<b>Function</b>	Has phospholipase and triglyceride lipase activities. Hydrolyzes high density lipoproteins (HDL) more efficiently than other lipoproteins. Binds heparin.
<b>Tissue specificity</b>	High level of expression in the liver, placenta, lung, thyroid, kidney, testis and in the corpus luteum of the ovary. Expressed also in coronary artery endothelial cells, umbilical vein endothelial cells and in hepatocyte and osteosarcoma cell lines. Not detected in heart, brain and muscle.
<b>Sequence similarities</b>	Belongs to the AB hydrolase superfamily. Lipase family. Contains 1 PLAT domain.
<b>Cellular localization</b>	Secreted.

## Images



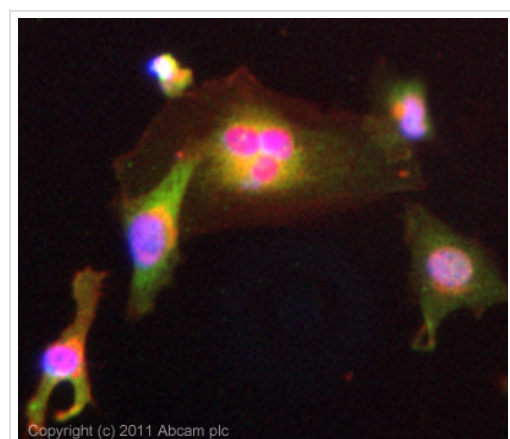
Western blot - Anti-LIPG antibody (ab24447)

Anti-LIPG antibody (ab24447) + HepG2 lysate

**Observed band size:** 57 kDa

[why is the actual band size different from the predicted?](#)

Use ab24447 at 1-4µg/ml.



Immunocytochemistry/ Immunofluorescence - Anti-LIPG antibody (ab24447)

ICC/IF image of ab24447 stained HeLa cells. The cells were 4% formaldehyde (10 min) and then incubated in 1%BSA / 10% normal goat serum / 0.3M glycine in 0.1% PBS-Tween for 1h to permeabilise the cells and block non-specific protein-protein interactions. The cells were then incubated with the antibody (ab24447, 5µg/ml) overnight at +4°C. The secondary antibody (green) was for 1h. Alexa Fluor® 594 WGA was used to label plasma membranes (red) at a 1/200 dilution for 1h. DAPI was used to stain the cell nuclei (blue) at a concentration of 1.43µM.

**Please note:** All products are "FOR RESEARCH USE ONLY AND ARE NOT INTENDED FOR DIAGNOSTIC OR THERAPEUTIC USE"

## **Our Abpromise to you: Quality guaranteed and expert technical support**

---

- Replacement or refund for products not performing as stated on the datasheet
- Valid for 12 months from date of delivery
- Response to your inquiry within 24 hours
  
- We provide support in Chinese, English, French, German, Japanese and Spanish
- Extensive multi-media technical resources to help you
- We investigate all quality concerns to ensure our products perform to the highest standards

If the product does not perform as described on this datasheet, we will offer a refund or replacement. For full details of the Abpromise, please visit <https://www.abcam.com/abpromise> or contact our technical team.

## **Terms and conditions**

---

- Guarantee only valid for products bought direct from Abcam or one of our authorized distributors